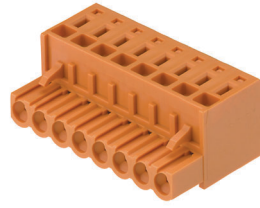
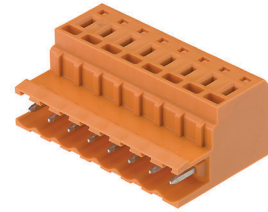


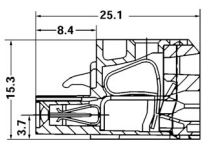
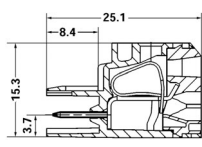
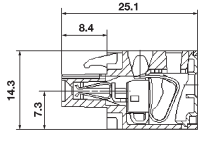
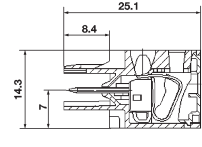
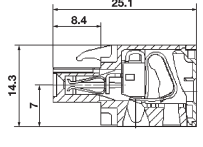
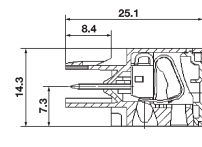

Connectors for Pluggable Terminal Blocks

BLZF



SLZF



Terminal Block Selection Data		BLZF		SLZF	
Available Options	Version	Type	Part No.	Type	Part No.
Connectors 180°	Orange Wemid	BLZF 5.08/2	1707460000	BLZF 5.08/9	1707530000
		BLZF 5.08/3	1707470000	BLZF 5.08/10	1707540000
		BLZF 5.08/4	1707480000	BLZF 5.08/11	1707550000
		BLZF 5.08/5	1707490000	BLZF 5.08/12	1707560000
		BLZF 5.08/6	1707500000	BLZF 5.08/13	1707570000
		BLZF 5.08/7	1707510000	BLZF 5.08/14	1707580000
		BLZF 5.08/8	1707520000	BLZF 5.08/15	1707590000
Connectors 90°	Orange Wemid	BLZF 5.08/2	1670790000	BLZF 5.08/9	1670860000
		BLZF 5.08/3	1670800000	BLZF 5.08/10	1670870000
		BLZF 5.08/4	1670810000	BLZF 5.08/11	1670880000
		BLZF 5.08/5	1670820000	BLZF 5.08/12	1670890000
		BLZF 5.08/6	1670830000	BLZF 5.08/13	1670900000
		BLZF 5.08/7	1670840000	BLZF 5.08/14	1670910000
		BLZF 5.08/8	1670850000	BLZF 5.08/15	1670920000
Connectors 270°	Orange Wemid	BLZF 5.08/2	1671940000	BLZF 5.08/9	1672010000
		BLZF 5.08/3	1671950000	BLZF 5.08/10	1672020000
		BLZF 5.08/4	1671960000	BLZF 5.08/11	1672030000
		BLZF 5.08/5	1671970000	BLZF 5.08/12	1672040000
		BLZF 5.08/6	1671980000	BLZF 5.08/13	1672050000
		BLZF 5.08/7	1671990000	BLZF 5.08/14	1672060000
		BLZF 5.08/8	1672000000	BLZF 5.08/15	1672070000
Dimensions					
Width / Length / Height plugged in		No. of poles x 5/14.3/25.1		No. of poles x 5/14.3/25.1	
Insulation stripping length	mm (in.)	10 (.39)		10 (.39)	
Technical Data					
Rated voltage / rated current / wire size	UL	300 V / 10 A / #26...12 AWG		300 V / 10 A / #26...12 AWG	
	CSA	300 V / 15 A / #26...14 AWG		300 V / 15 A / #26...14 AWG	
	VDE	-		-	
Rated voltage / rated current / cross section		250 V / 16 A / 2.5 mm ²		250 V / 16 A / 2.5 mm ²	
Rated insulation voltage to VDE 0110 / 2.89 / pollution severity		4 kV / 3		4 kV / 3	
Further Technical Data					
Clampable conductor:					
solid H07V-U	mm ²	0.5...2.5	0.5...2.5	0.5...2.5	0.5...2.5
flexible H07V-K	mm ²	0.5...2.5	0.5...2.5	0.5...2.5	0.5...2.5
with ferrule to DIN 46 228/1**	mm ²	0.5...1.5 [†]	0.5...1.5 [†]	0.5...1.5 [†]	0.5...1.5 [†]
with ferrule with plastic insulating collar**	mm ²	0.5...1.5	0.5...1.5	0.5...1.5	0.5...1.5
Max clamping range in mm ² / Gauge pin to IEC 60 947-1/1998	Size	0.13...2.5 A2	0.13...2.5 A2	0.13...2.5 A2	0.13...2.5 A2
Selected Accessory Data[†]					
Screwdriver		Type	Part No.	Type	Part No.
SD to DIN 5264-A		SD 0.6 x 3.5	9008330000	SD 0.6 x 3.5	9008330000
					
Reducing Sleeves***	Color				
ZRH for conductor 0.13...0.2 mm ²	White	ZRH 1.5N / 1	1632140000	ZRH 1.5N / 1	1632140000
ZRH for conductor 0.25...0.5 mm ²	Gray	ZRH 1.5N / 2	1632130000	ZRH 1.5N / 2	1632130000
ZRH for conductor 0.75...1 mm ²	Dark gray	ZRH 1.5N / 3	1632120000	ZRH 1.5N / 3	1632120000