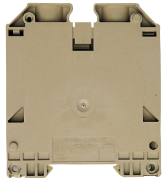
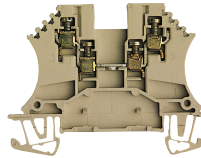


WDU 70N



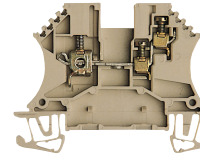
WDU 1.5/ZZ

Accepts pluggable or screw jumpers



WDU 2.5/1.5/ZR

Accepts pluggable or screw jumpers



Single Level

Branch

Branch

Part No.		Part No.		Part No.	
		1031400000		1024700000	
		1031480000		1024780000	
9512190000					
9512420000					
20.5/75/86 (.81/2.95/3.39)		5/60/47 (.20/2.36/1.85)		5/60/47 (.20/2.36/1.85)	
22 (.87)		7 (.28)		10/7 (.39/.28)	
1000 V / 175 A / #6...2/0 AWG		300 V / 10 A / #22...12 AWG*		300 V / 20/10 A / #22...12/14 AWG*	
600 V / 205 A / #8...2/0 AWG		150 V / 10 A / #26...14 AWG		300 V / 20/15 A / #26...12/14 AWG	
1000 V / 192 A / 70 mm ²		690 V / 17.5 A / 1.5 mm ²		690 V / 24/17.5 A / 2.5 / 1.5 mm ²	
9.9/2.0 [‡] (87.0/17.5 [‡])		0.51 (4.5)		0.8 (7.1)	
8		2.5		2.5	
Type	Part No.	Type	Part No.	Type	Part No.
Not Required		WAP (1.5)	1050000000	WAP (1.5)	1050000000
Not Required		WAP (1.5)	1050080000	WAP (1.5)	1050080000
		WAP (1.5)	1050060000	WAP (1.5)	1050060000
		WTW (3)	1050100000	WTW (3)	1050100000
		WTW (3)	1050180000	WTW (3)	1050180000
		WEW 35/2 [‡]	1061200000	WEW 35/2 [‡]	1061200000
WQV 70N/2	9512240000	WQV 2.5/2	1053660000	ZQV 2.5N/2	1693800000
WQV 70N/3	9512250000	WQV 2.5/3	1053760000	ZQV 2.5N/3	1693810000
		WQV 2.5/4	1053860000	ZQV 2.5N/4	1693820000
		WQV 2.5/5	1053960000	ZQV 2.5N/5	1693830000
		WQV 2.5/6	1054060000	ZQV 2.5N/6	1693840000
		WQV 2.5/7	1054160000	ZQV 2.5N/7	1693850000
		WQV 2.5/8	1054260000	ZQV 2.5N/8	1693860000
		WQV 2.5/9	1054360000	ZQV 2.5N/9	1693870000
		WQV 2.5/10	1054460000	ZQV 2.5N/10	1693880000
		WQB 24/16	1579060000	ZQV 2.5N/50	1693890000
		LS 2.8	1056400000	LS 2.8	1056400000
		ZQV 2.5N jumpers are also available in Red, Blue, and Black. See page 191		ZQV 2.5N jumpers are also available in Red, Blue, and Black. See page 191	
WZAD 70N	9512280000				
		WAW 1	9004500000	WAW 1	9004500000
		SD	9008330000	SD	9008330000
Hex wrench (6 mm)	0407900000				
		PS 2.3 (ø 2.3)	0180400000	PS 2.3 (ø 2.3)	0180400000
PS 4 (ø 4)	0299600000				
StB not required. PS 4 can be inserted into the head of the clamping screw.		StB 8.5 (ø 2.3)	0215700000	StB 8.5 (ø 2.3)	0215700000
DEK 5/6.5	0468160001	DEK 5/5	0473460001	DEK 5/5	0473460001
DEK 5/6.5	0468260001	DEK 5/5	0473560001	DEK 5/5	0473560001

RAIL MOUNTED TERMINAL BLOCKS: W-SERIES

*Current rating on single clamp side is 20 A. On dual clamp side, rating is 10 A per clamp.
 Wire size is 12 AWG on single clamp side and 14 AWG on dual clamp side.
 †When WEW 35/2 is used, a WAP is not required.
 ‡Applies to jumper screw.