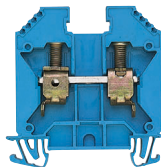


Feed Through Terminals

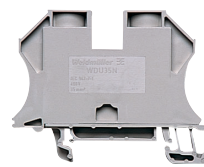
WDU 16N



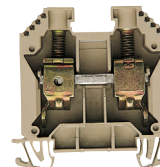
WDU 16



WDU 35N



WDU 35



Single Level

Single Level

Single Level

Single Level

Terminal Block Selection Data

| Available Options | | Version | Part No. | Part No. | Part No. | Part No. |
|---|--------------|-----------------------------------|------------------------------------|------------------------------------|-------------------------------------|------------|
| | | Beige Wemid | 1036100000 | 1020400000 | 1040400000 | 1020500000 |
| | | Blue Wemid | 1036180000 | 1020480000 | 1040480000 | 1020580000 |
| | | Beige Wemid (hex socket) | | | | 1020600000 |
| | | Blue Wemid (hex socket) | | | | 1020680000 |
| Dimensions | | | | | | |
| Width / Length / Height mm (in.) | for TS 35 | 12/60/47 (.47/2.36/1.85) | 12/60/63 (.47/2.36/2.48) | 16/66/63 (.63/2.60/2.48) | 16/60/63 (.63/2.36/2.48) | |
| Insulation stripping length | mm (in.) | 12 (.47) | 16 (.63) | 18 (.71) | 18 (.71) | |
| Technical Data | | | | | | |
| Rated voltage / rated current / wire size | UL | 600 V / 70 A / #14...6 AWG | 600 V / 80 A / #14...4 AWG | 1000 V / 115 A / #12...2 AWG | 1000 V / 115 A / #12...2 AWG | |
| | CSA | 600 V / 65 A / #14...6 AWG | 600 V / 65 A / #14...6 AWG | 600 V / 120 A / #12...2 AWG | 600 V / 120 A / #12...2 AWG | |
| | VDE | 400 V / 76 A / 16 mm ² | 1000 V / 76 A / 16 mm ² | 600 V / 125 A / 35 mm ² | 1000 V / 125 A / 35 mm ² | |
| Torque | Nm (lb. in.) | 2.3 (20.4) | 4.0 (35.0) | 5.8 (51.0) | 5.8 (51.0) | |
| Clamping screw | M | 4 | 5 | 6 | 6 | |

Selected Accessory Data*

| End Plate (WAP) / Partition (WTW) (thickness mm) | | Type | Part No. | Type | Part No. | Type | Part No. | Type | Part No. |
|--|--------------|--------------|------------|-----------|------------|--------------|----------|-----------|------------|
| | Beige Wemid | Not Required | | WAP (1.5) | 1050100000 | Not Required | | WAP (1.5) | 1050100000 |
| | Blue Wemid | Not Required | | WAP (1.5) | 1050180000 | Not Required | | WAP (1.5) | 1050180000 |
| | Orange Wemid | | | | | | | | |
| | Beige Wemid | WTW (3) | 1058800000 | | | | | | |
| | Blue Wemid | | | | | | | | |
| | Beige Wemid | | | | | | | | |

| Jumpers | | Type | Part No. | Type | Part No. | Type | Part No. | Type | Part No. |
|---|--|-----------|------------|---------------|------------|-----------|------------|---------------|------------|
| <p>Note: Final number in model indicates no. of poles (e.g. WQV 16N/2 = 2 poles). For additional information, see Accessories section.</p> <p>WQV</p> <p>WQB 24/16</p> <p>Shield Bar LS 2.8**</p> | | WQV 16N/2 | 1636560000 | WQV 16/2 | 1053260000 | WQV 35N/2 | 1079200000 | WQV 35/2 | 1053060000 |
| | | WQV 16N/3 | 1636570000 | WQV 16/3 | 1055160000 | WQV 35N/3 | 1079300000 | WQV 35/3 | 1055360000 |
| | | WQV 16N/4 | 1636580000 | WQV 16/4 | 1055260000 | WQV 35N/4 | 1079400000 | WQV 35/4 | 1055460000 |
| | | | | WQV 16/10 | 1053360000 | | | WQV 35/10 | 1053160000 |
| | | | | WQV 16/2 blue | 1053280000 | | | WQV 35/2 blue | 1053080000 |
| | | | | | | | | | |

Auxiliary / Control Conductor Terminal

| Tools | | Type | Part No. | Type | Part No. | Type | Part No. | Type | Part No. |
|--|--|-------|------------|-------|------------|------|------------|-------------------|------------|
| <p>Cutting tool WAW 1 for WQV jumpers</p> <p>Screwdriver</p> <p>Hexagon socket screw key</p> | | WAW 1 | 9004500000 | WAW 1 | 9004500000 | | | | |
| | | SD | 9008350000 | SD | 9008350000 | SD | 9008350000 | SD | 9008350000 |
| | | | | | | | | Hex wrench (4 mm) | 0485100000 |

| Test Plugs / Sockets | | Type | Part No. | Type | Part No. | Type | Part No. | Type | Part No. |
|---|--|-----------------|------------|--------------|------------|--------------|------------|--------------|------------|
| <p>PS 2.3 Test plug</p> <p>StB 8.5 Socket</p> <p>For #18 AWG wire</p> <p>For #12 AWG wire</p> | | PS 2.3 (ø 2.3) | 0180400000 | | | | | | |
| | | PS 4 (ø 4) | 0299600000 | PS 4 (ø 4) | 0299600000 | PS 4 (ø 4) | 0299600000 | PS 4 (ø 4) | 0299600000 |
| | | StB 8.5 (ø 2.3) | 0280600000 | | | | | | |
| | | StB 14 (ø 4) | 0169900000 | StB 16 (ø 4) | 0140200000 | StB 16 (ø 4) | 0140200000 | StB 16 (ø 4) | 0140200000 |

| Marking Tags | | Print | Type | Part No. | Type | Part No. | Type | Part No. | Type | Part No. |
|---|--|-----------|------------|-----------|------------|-----------|------------|-----------|------------|----------|
| <p>Consecutive horizontal</p> <p>Consecutive vertical</p> | | DEK 5/6.5 | 0468160001 | DEK 5/6.5 | 0468160001 | DEK 5/6.5 | 0468160001 | DEK 5/6.5 | 0468160001 | |
| | | DEK 5/6.5 | 0468260001 | DEK 5/6.5 | 0468260001 | DEK 5/6.5 | 0468260001 | DEK 5/6.5 | 0468260001 | |

Note: Part numbers shown are for a single card of pre-printed tags numbered 1-50. For additional information, see Accessories section.

*See Accessories section for additional information.