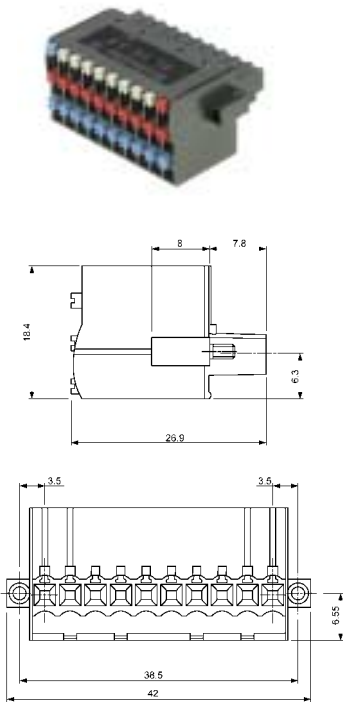




Socket blocks BL-I/O 3.5/30F

new

Connection of eight 3-wire sensors/actuators, integrated power distribution, and six jumpering contacts for voltage feeding/distribution.



Technical data	VDE	UL	CSA
Rated voltage (V)	50*	50	50
Rated current (A)	4	5	5
Total current carrying capacity (A)	10	–	–
Wire size (mm ² /AWG)	1.5	22...16	22...16

*Pollution severity 3 / Overvoltage category III

Additional technical data see page 214

Color	Poles	Type	Part No.	Qty.
	30	BL-I/O 3.5/30F	1779920000	20

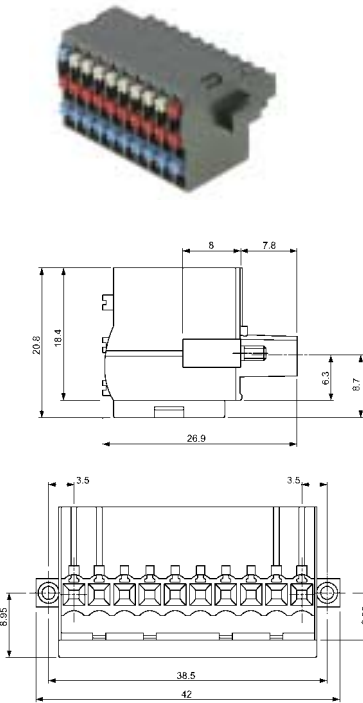
Front panel design recommendations are found on page 239.

Accessories	Page
Mounting	integrated in product
Marking	190
Coding	193

Socket blocks BL-I/O 3.5/30F LED

new

Connection of eight 3-wire sensors/actuators, integrated power distribution, integrated LEDs, and six jumpering contacts for voltage feeding/distribution.



Technical data	VDE	UL	CSA
Rated voltage (V)	24*	24	24
Rated current (A)	4	5	5
Total current carrying capacity (A)	10	–	–
Wire size (mm ² /AWG)	1.5	22...16	22...16

*Pollution severity 3 / Overvoltage category III

Additional technical data see page 214

Color	Poles	Type	Part No.	Qty.
	30	BL-I/O 3.5/30F LED	1789110000	20

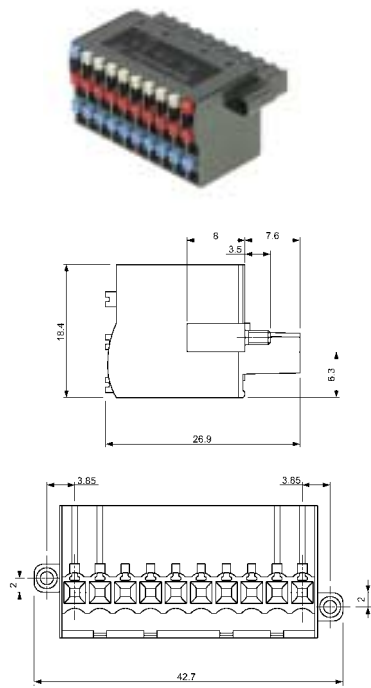
Front panel design recommendations are found on page 239.

Accessories	Page
Mounting	integrated in product
Marking	190
Coding	193

Socket blocks BL-I/O 3.5/30FP

new

Connection of eight 3-wire sensors/actuators, integrated power distribution, six jumpering contacts for voltage feeding/distribution, and compact flanges for bolting the socket connector to the front of a device. Compact flanges are offset to allow socket blocks to nest for space savings.



Technical data	VDE	UL	CSA
Rated voltage (V)	50*	50	50
Rated current (A)	4	5	5
Total current carrying capacity (A)	10	–	–
Wire size (mm ² /AWG)	1.5	22...16	22...16

*Pollution severity 3 / Overvoltage category III

Additional technical data see page 214

Color	Poles	Type	Part No.	Qty.
	30	BL-I/O 3.5/30FP	1779910000	20

Front panel design recommendations are found on page 239.

Accessories	Page
Mounting	integrated in product
Marking	190
Coding	193