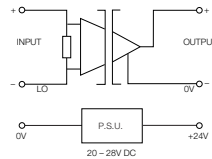


Analog Signal Conditioners

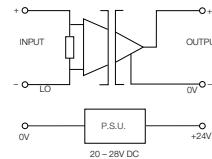
DK6 / ISO / V-I

Voltage Input / 0...10 VDC
Terminal Block



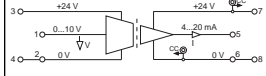
DK6 / ISO / V-V

Voltage Input / 0...10 VDC
Terminal Block



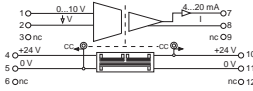
WAS4/WAZ4 VCC DC

Voltage Input / 0...10 V
Enclosed Pluggable

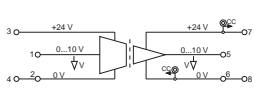


Ordering Data	Type	Part No.	Type	Part No.	Type	Part No.
Screw clamp for TS 35 rail						
Screw clamp for TS 32 rail						
Screw clamp for combi-foot, TS 35 or TS 32 rail	DK6 / ISO / V-I	980682	DK6 / ISO / V-V	980683	WAS4 VCC DC	844710
Tension clamp for TS 35 rail					WAZ4 VCC DC	844711
Technical Data	Input signal type	Voltage	Voltage	Voltage	Voltage	Voltage
Material or excitation						
Input range (min...max.)	0...10 VDC		0...10 VDC		0...10 V	
Input impedance	500 Ω typical		500 Ω typical			
Line resistance						
Input maximum	15 VDC		15 VDC		15 V	
Supply voltage (min./max.)	20...28 VDC		20...28 VDC		24 VDC ± 20% (19.2...28.8 VDC)	
Supply current (min./max.)						
Current/power consumption	850 mW max.		850 mW max.			
Power requirements	External		External		External	
Continuous current rating						
Response or switching freq. max.						
Supply current to PT 100 sensor						
Zero setting (4.0 mA) adjustment	No		No			
Span adjustment (20 mA)	No		No			
Output signal type	Current		Voltage		Current	
Output range	4...20 mA		0...10 VDC		4...20 mA	
Output load/loop resistance	500 Ω max. / 0 Ω min.		∞ / 1 kΩ min.		≤ 500 Ω	
Output supply voltage (min./max.)						
Output supply current (max.)						
Cold junction comp error						
Common mode rejection						
Accuracy input/output	±0.1% of FS		±0.1% of FS		± 0.2% from FS	
Linearity input/output	± 0.05% of FS		± 0.05% of FS			
Temperature coefficient	<±0.01%/°C		<±0.01%/°C		≤250 ppm/K from FS	
Transmission frequency	10 kHz		10 kHz		≤ 30 ms (typ 25 ms)	
Coupling method	Magnetic		Magnetic		Magnetic	
Cross-connections on pin						
Operating Specifications						
Dielectric isolation input to output	1 kV		1 kV			
Dielectric isolation I/O to power supply	1 kV		1 kV			
Dielectric isolation I/O to DIN-rail	1 kV		1 kV		4 kV _{eff} / 1 min	
Storage temperature range					-20°C...+85°C	
Operating temperature range	0°C...+55°C		0°C...+55°C		0°C...+55°C	
Relative humidity (non-condensing)						
Wire size	#20...12 AWG / 0.5...2.5 mm ²		#20...12 AWG / 0.5...2.5 mm ²		#22...12 AWG	
Clamp screw tightening torque Nm (lb.in.)	0.5 (4.38)		0.5 (4.38)			
Mechanical dimensions (WxLxH) mm (in.)	9.5x89x68 (.37x3.50x2.68)		9.5x89x68 (.37x3.50x2.68)		12.5x92.4x112.5 (.49x3.64x4.43)	
Dimensional diagram	Page 404 Fig. 4		Page 404 Fig. 4		Page 402 Fig. 1	
Insulation stripping length mm (in.)	9 (.35)		9 (.35)			
Certification standards	CE		CE		UL, CSA, CE	
Accessories	Type	Part No.	Type	Part No.	Type	Part No.
End plate side cover	Included	-	Included	-	AP MCZ 1.5	838903
PC software kit†						
Cross-connection, black					ZQV 2.5N/2	171808
Cross-connection, red					ZQV 2.5N/2	171790
Cross-connection, blue					ZQV 2.5N/2	171799
Cross-connection, yellow					ZQV 2.5N/2	169380

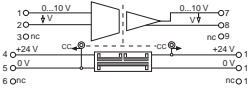
NEW
WAS5/WAZ5 VCC HF
 Voltage Input / 0...10 V
 Enclosed Pluggable



NEW
WAS4/WAZ4 VCC DC
 Voltage Input / 0...10 V
 Enclosed Pluggable



NEW
WAS5/WAZ5 VCC HF
 Voltage Input / 0...10 V
 Enclosed Pluggable



picoPak V/I
 Voltage Input / 0...50 mV
 Terminal Block



picoPak V/V
 Voltage Input / 0...50 mV
 Terminal Block



Type	Part No.	Type	Part No.	Type	Part No.	Type	Part No.	Type	Part No.
WAS5 VCC HF	844734	WAS4 VCC DC	844713	WAS5 VCC HF	844737	picoPak V/I	998309	picoPak V/V	998313
WAZ5 VCC HF	844735	WAZ4 VCC DC	844714	WAZ5 VCC HF	844738				
Voltage		Voltage		Voltage		Voltage		Voltage	
0...10 V		0...10 V		0...10 V		0...50 mV*		0...50 mV*	
						100 kΩ min.		100 kΩ min.	
15 V		15 V		15 V					
24 VDC ± 25% (18...30 VDC)		24 VDC ± 20% (19.2...28.8 VDC)		24 VDC ± 25% (18...30 VDC)		15...30 VDC		15...30 VDC	
						25...45 mA		25...30 mA	
External		External		External		External		External	
Current		Voltage		Voltage		Current		Voltage	
4...20 mA		0...10 V		0...10 V		4...20 mA*		0...10 V*	
		≥ 1 kΩ				600 Ω max.		2 kΩ min., 4 kΩ min.	
± 0.2% from FS		± 0.2% from FS		± 0.2% from FS		0.05% of full scale nominal, 0.2% max. for voltage output		0.05% of full scale nominal, 0.2% max. for voltage output	
≤250 ppm/K from FS		≤250 ppm/K from FS		≤250 ppm/K from FS					
≤ 40 μs (typ 30 μs)		≤ 30 ms (typ 25 ms)		≤ 40 μs (typ 30 μs)		10 Hz		10 Hz	
Magnetic		Magnetic		Magnetic		Optically Isolated		Optically Isolated	
						1500 VAC RMS, 3 port		1500 VAC RMS, 3 port	
4 kV _{eff} / 1 min		4 kV _{eff} / 1 min		4 kV _{eff} / 1 min					
-20°C...+85°C		-20°C...+85°C		-20°C...+85°C		-40°C...+85°C		-40°C...+85°C	
0°C...+55°C		0°C...+55°C		0°C...+55°C		-40°C...+75°C		-40°C...+75°C	
#22...12 AWG		#22...12 AWG		#22...12 AWG		#26...12 AWG / 0.5...2.5 mm ²		#26...12 AWG / 0.5...2.5 mm ²	
						0.6 (5.31)		0.6 (5.31)	
17.5x92.4x112.5 (.69x3.64x4.43)		12.5x92.4x112.5 (.49x3.64x4.43)		17.5x92.4x112.5 (.69x3.64x4.43)		12x88x68 (.47x3.46x2.68)		12x88x68 (.47x3.46x2.68)	
Page 402 Fig. 2		Page 402 Fig. 1		Page 402 Fig. 2		Page 404 Fig. 4		Page 404 Fig. 4	
UL, CSA, CE		UL, CSA, CE		UL, CSA, CE		UL, CSA, CE		UL, CSA, CE	
Type	Part No.	Type	Part No.	Type	Part No.	Type	Part No.	Type	Part No.
AP MCZ 1.5	838903	AP MCZ 1.5	838903	AP MCZ 1.5	838903	-	-	-	-
						-	998471	-	998471
ZQV 2.5N/2	171808	ZQV 2.5N/2	171808	ZQV 2.5N/2	171808				
ZQV 2.5N/2	171790	ZQV 2.5N/2	171790	ZQV 2.5N/2	171790				
ZQV 2.5N/2	171799	ZQV 2.5N/2	171799	ZQV 2.5N/2	171799				
ZQV 2.5N/2	169380	ZQV 2.5N/2	169380	ZQV 2.5N/2	169380				

*Consult factory for custom configurations.