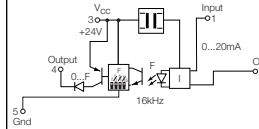


Analog Signal Conditioners

picoPak I/V
Current Input / 0...20 mA
Terminal Block



DK5 / I-F
Current Input / 0...20 mA
Terminal Block

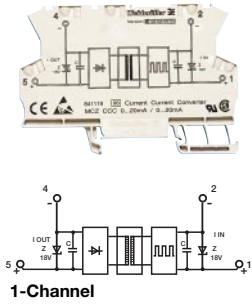


1	2	3	4	DIP Switch
1	0	0	0	0...16 kHz
0	1	0	0	0...8 kHz
0	0	1	0	0...4 kHz
0	0	0	1	0...1 kHz

Ordering Data	Type	Part No.	Type	Part No.
Screw clamp for TS 35 rail				
Screw clamp for TS 32 rail				
Screw clamp for combi-foot, TS 35 or TS 32 rail	picoPak I/V	998305	DK5 / I-F	825887
Tension clamp for TS 35 rail				
Technical Data	Input signal type	Current	Current	Current
Material or excitation				
Input range (min...max.)	0...20 mA*		0...20 mA	
Input impedance	82.5 Ω max.		50 Ω	
Line resistance				
Input maximum			50 mA DC	
Supply voltage (min./max.)	15...30 VDC			
Supply current (min./max.)	25...30 mA			
Current/power consumption				
Power requirements	External		External	
Continuous current rating				
Response or switching freq. max.				
Supply current to PT 100 sensor				
Zero setting (4.0 mA) adjustment			±5%	
Span adjustment (20 mA)			±10% FS	
Output signal type	Voltage		Frequency	
Output range	0...10 V*		0...1, 4, 8 or 16 kHz	
Output load/loop resistance	2 kΩ min., 4 kΩ min.		1 k Ω	
Output supply voltage (min./max.)			24 VDC ±10%	
Output supply current (max.)			14 mA	
Cold junction comp error				
Common mode rejection				
Accuracy input/output	0.05% of full scale nominal, 0.2% max. for voltage output		≤0.2% of FS at Tu=20°C	
Linearity input/output				
Temperature coefficient			≤250 ppm/°C	
Transmission frequency	10 Hz			
Coupling method	Optically Isolated		Optically Isolated	
Cross-connections on pin				
Operating Specifications				
Dielectric isolation input to output	1500 VAC RMS, 3 port		1 kV	
Dielectric isolation I/O to power supply				
Dielectric isolation I/O to DIN-rail			4 kV	
Storage temperature range	-40°C...+85°C		-25°C...+60°C	
Operating temperature range	-40°C...+75°C		0°C...+50°C	
Relative humidity (non-condensing)				
Wire size	#26...12 AWG / 0.5...2.5 mm²		#20...12 AWG / 0.5...2.5 mm²	
Clamp screw tightening torque Nm (lb.in.)	0.6 (5.31)		0.5 (4.38)	
Mechanical dimensions (WxLxH) mm (in.)	12x88x68 (.47x3.46x2.68)		6x77x62 (.24x3.03x2.44)	
Dimensional diagram	Page 404 Fig. 4		Page 404 Fig. 3	
Insulation stripping length mm (in.)			9 (.35)	
Certification standards	UL, CSA, CE		CE	
Accessories	Type	Part No.	Type	Part No.
End plate side cover	-	-	AP (1.5)	C9039986
PC software kit†	-	998471		
Cross-connection, black				
Cross-connection, red				
Cross-connection, blue				
Cross-connection, yellow				

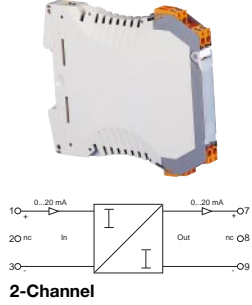
MCZ CCC

Current Input / 0...20 mA
Terminal Block



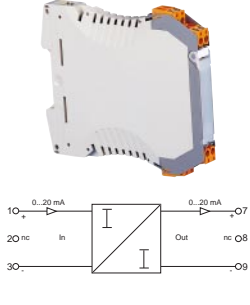
WAS5/WAZ5 CCC LP

Current Input / 0...20 mA
Enclosed Pluggable



WAS5/WAZ5 CCC LP

Current Input / 0...20 mA
Enclosed Pluggable



picoPak I/I

Current Input / 0...1 mA
Terminal Block



picoPak I/I

Current Input / 0...1 mA
Terminal Block



Type	Part No.	Type	Part No.	Type	Part No.	Type	Part No.	
		WAS5 CCC LP	844495	WAS5 CCC LP	846358	picoPak I/I	998298	
MCZ CCC 0...20 mA	841119	WAZ5 CCC LP	844496	WAZ5 CCC LP	846359		picoPak I/I	998294
Current		Current		Current		Current	Current	
0...20 mA (max. 15 V) 2.5...3 V (at 20 mA)		0...20 mA (4...20 mA)		0...20 mA (4...20 mA)		0...1 mA* 82.5 Ω max.	0...1 mA* 82.5 Ω max.	
50 mA, 15 V		50 mA 18 V		50 mA 18 V		15...30 VDC 2...45 mA	15...30 VDC 2...45 mA	
< 100 µA Loop Powered		< 100 µA External		< 100 µA External		External	External	
Current		Current		Current		Current	Current	
0...20 mA (max. 10 V)		0...20 mA (4...20 mA)		0...20 mA (4...20 mA)		4...20 mA*	0...20 mA*	
		≤ 500 Ω		≤ 500 Ω		600 Ω max.	600 Ω max.	
< 0.1% from end value, +0.05% from mean / 100 Ω load		< 0.1% FS		< 0.1% FS		0.05% of full scale nominal, 0.2% max. for voltage output	0.05% of full scale nominal, 0.2% max. for voltage output	
< 50 ppm/K @ 0 Ω load ≈ 200 kHz Magnetic		50 ppm/K from FS 4.5 ms at 500 Ω load Magnetic		50 ppm/K from FS 4.5 ms at 500 Ω load Magnetic		10 Hz Optically Isolated	10 Hz Optically Isolated	
4 kV 510 V _{eff}		4 kV		4 kV		1500 VAC RMS, 3 port	1500 VAC RMS, 3 port	
-40°C...+85°C -25°C...+40°C		4 kV -40°C...+80°C -25°C...+70°C		4 kV -40°C...+80°C -25°C...+70°C		-40°C...+85°C -40°C...+75°C	-40°C...+85°C -40°C...+75°C	
#22...12 AWG Tension Clamp		#22...12 AWG		#22...12 AWG		#26...12 AWG / 0.5...2.5 mm ² 0.6 (5.31)	#26...12 AWG / 0.5...2.5 mm ² 0.6 (5.31)	
6x91x63.2 (.24x3.58x2.49)		17.5x92.4x112.5 (.69x3.64x4.43) Page 402 Fig. 2		17.5x92.4x112.5 (.69x3.64x4.43) Page 402 Fig. 2		12x88x68 (.47x3.46x2.68) Page 404 Fig. 4	12x88x68 (.47x3.46x2.68) Page 404 Fig. 4	
UL, CSA, CE Type	Part No.	UL, CSA, CE Type	Part No.	UL, CSA, CE Type	Part No.	UL, CSA, CE Type	Part No.	
AP MCZ 1.5	838903	AP MCZ 1.5	838903	AP MCZ 1.5	838903	-	-	
		ZQV 2.5N/2	171808	ZQV 2.5N/2	171808	-	-	
		ZQV 2.5N/2	171790	ZQV 2.5N/2	171790	-	-	
		ZQV 2.5N/2	171799	ZQV 2.5N/2	171799	998471	998471	
		ZQV 2.5N/2	169380	ZQV 2.5N/2	169380	-	-	

*Consult factory for custom configurations.

ANALOG SIGNAL CONDITIONERS