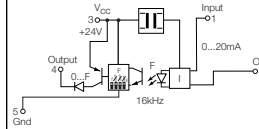


# Analog Signal Conditioners

**picoPak I/V**  
Current Input / 0...20 mA  
Terminal Block



**DK5 / I-F**  
Current Input / 0...20 mA  
Terminal Block



1	2	3	4	DIP Switch
1	0	0	0	0...16 kHz
0	1	0	0	0...8 kHz
0	0	1	0	0...4 kHz
0	0	0	1	0...1 kHz

Ordering Data	Type	Part No.	Type	Part No.
Screw clamp for TS 35 rail				
Screw clamp for TS 32 rail				
Screw clamp for combi-foot, TS 35 or TS 32 rail	picoPak I/V	998305	DK5 / I-F	825887
Tension clamp for TS 35 rail				
Technical Data	Input signal type	Current	Current	
Material or excitation				
<b>Input range (min...max.)</b>	<b>0...20 mA*</b>		<b>0...20 mA</b>	
Input impedance	82.5 Ω max.		50 Ω	
Line resistance				
Input maximum			50 mA DC	
Supply voltage (min./max.)	15...30 VDC			
Supply current (min./max.)	25...30 mA			
Current/power consumption				
<b>Power requirements</b>	<b>External</b>		<b>External</b>	
Continuous current rating				
Response or switching freq. max.				
Supply current to PT 100 sensor				
Zero setting (4.0 mA) adjustment			±5%	
Span adjustment (20 mA)			±10% FS	
<b>Output signal type</b>	<b>Voltage</b>		<b>Frequency</b>	
<b>Output range</b>	<b>0...10 V*</b>		<b>0...1, 4, 8 or 16 kHz</b>	
Output load/loop resistance	2 kΩ min., 4 kΩ min.		1 k Ω	
Output supply voltage (min./max.)			24 VDC ±10%	
Output supply current (max.)			14 mA	
Cold junction comp error				
Common mode rejection				
Accuracy input/output	0.05% of full scale nominal, 0.2% max. for voltage output		≤0.2% of FS at Tu=20°C	
Linearity input/output				
Temperature coefficient			≤250 ppm/°C	
Transmission frequency	10 Hz			
<b>Coupling method</b>	<b>Optically Isolated</b>		<b>Optically Isolated</b>	
Cross-connections on pin				
Operating Specifications				
Dielectric isolation input to output	1500 VAC RMS, 3 port		1 kV	
Dielectric isolation I/O to power supply				
Dielectric isolation I/O to DIN-rail			4 kV	
Storage temperature range	-40°C...+85°C		-25°C...+60°C	
Operating temperature range	-40°C...+75°C		0°C...+50°C	
Relative humidity (non-condensing)				
Wire size	#26...12 AWG / 0.5...2.5 mm <sup>2</sup>		#20...12 AWG / 0.5...2.5 mm <sup>2</sup>	
Clamp screw tightening torque Nm (lb.in.)	0.6 (5.31)		0.5 (4.38)	
Mechanical dimensions (WxLxH) mm (in.)	12x88x68 (.47x3.46x2.68)		6x77x62 (.24x3.03x2.44)	
Dimensional diagram	Page 404 Fig. 4		Page 404 Fig. 3	
Insulation stripping length mm (in.)			9 (.35)	
Certification standards	UL, CSA, CE		CE	
Accessories	Type	Part No.	Type	Part No.
End plate side cover	-	-	AP (1.5)	C9039986
PC software kit†	-	998471		
Cross-connection, black				
Cross-connection, red				
Cross-connection, blue				
Cross-connection, yellow				