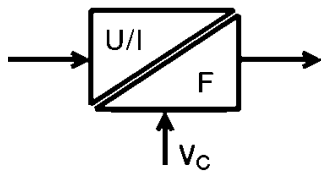


Frequency Signal Conditioners

- Screw connection
- LED-display
- Adjustable frequency output





For EMC reasons, frequency processing modules must be used in conjunction with shielded cables. This measure prevents interference of analog and frequency signals by other signal cables and vice versa.

Block diagram/settings

DKA U/f and DKA I/f

1	2	3	4	DIP switch
1	0	0	0	0...16 kHz
0	1	0	0	0...8 kHz
0	0	1	0	0...4 kHz
0	0	0	1	0...1 kHz

Ordering data

for TS 32 
 for TS 35 
 with combi foot TS 32/TS 35

Technical data

Input ranges
 Overload limits, input
 Input resistance
 Voltage drop, input
 Output
 Output frequency, end value
 Frequency adjustment
 Readjustment range
 Output level
 Output current
 Display
 Decoupling diode
 Supply voltage
 Power consumption
 Making current limit
 Polarization protection

Accuracy

Coordination of insulation to DIN VDE 0160, Draft 11/94

Voltage strength input/output
 Rated voltage
 Rated surge voltage
 Overvoltage category
 Voltage strength to mounting rail
 Operating temperature
 Storage temperature
 Overall width mm (in.)
 Conductor cross-section

Accessories

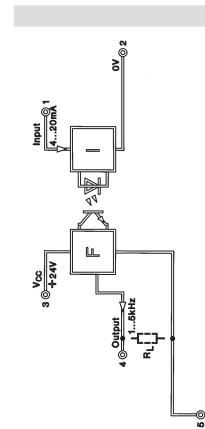
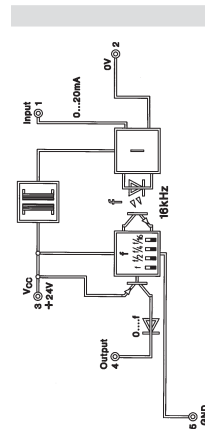
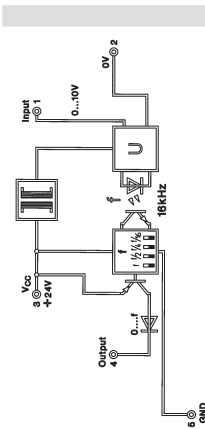
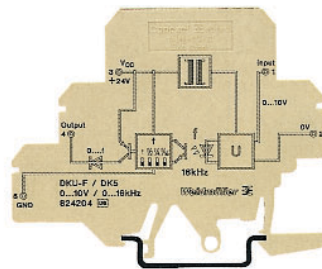
End plate
 Dimensions and accessories see

* without DC/DC converter
 input supply via current loop

DKA U/f

DKA I/f

DKA I/f*



Type Part No.

DKA U/f **8242040000**

0...10 V

100 V

100 kΩ

1 kHz, 4 kHz, 8 kHz, 16 kHz

DIP switch

±10%, internal

PNP, Ub- 0.7 V

max. 20 mA

LED, pulsing

present

24 VDC ±10%

14 mA, w/o load

200 mA

yes

0.2% v. FSR

<250 ppm/°C

1 kVDC

4 kV_{eff}

0°C...+50°C

-25°C...+60°C

6 (.24)

0.5...4 mm² (20...12 AWG)

Type Part No.

AP DK5 **8268870000**

Page 363

Type Part No.

DKA I/f **8258870000**

0...20 mA

50 mA

50 Ω

1 V at 20 mA

1 kHz, 4 kHz, 8 kHz, 16 kHz

DIP switch

±10%, internal

PNP, Ub- 0.8 V

max. 20 mA

LED, pulsing

present

24 VDC ±10%

14 mA w/o load

200 mA

yes

0.2% v. FSR

<250 ppm/°C

1 kVDC

4 kV_{eff}

0°C...+50°C

-25°C...+60°C

6 (.24)

0.5...4 mm² (20...12 AWG)

Type Part No.

AP DK5 **8268870000**

Page 363

Type Part No.

DKA I/f * **8081330000**

4...20 mA

50 mA

max. 320 Ω at 20 mA

max. 6.4 V at 20 mA

5 kHz (1...5 kHz)

DIP switch

±10%, internal

PNP, Ub- 3 V

max. 20 mA

LED, pulsing

present

19.2...28.8 VDC

<13 mA w/o load

yes

0.15% v. FSR

<250 ppm/°C 2

4 kV_{eff}

150 V

2.5 kV

III

4 kV_{eff}

0°C...+50°C

-25°C...+60°C

6 (.24)

0.5...4 mm² (20...12 AWG)

Type Part No.

AP DK5 **8268870000**

Page 363