

Series CA6 Contactors

A

Contactors

CA6

The modern contactor for demanding applications from 60 to 350HP



Sprecher + Schuh's CA6 contactor line combines the simple function of our popular CA7 series with the rugged performance demanded in this middle horsepower range. On average these contactors are 50% smaller than traditional contactors in this size class.

A broad selection for middle horsepower applications

The CA6 range consists of eight contactors in three frame sizes covering motors from 60 to 350HP (at 460V) and from 75 to 400HP (at 575V). This line is ideally suited for demanding applications such as steel mills, rock quarries, mines or for any middle horsepower application where a sturdy, durable contactor is needed.

Rugged and reliable

CA6 contactors conform to UL508, as well as IEC 947 and can be operated at rated voltages up to 600V (UL) and 1000V (IEC). High thermal and switching capacities guarantee reliable operation and long life. CA6 contactors are listed in CSA Certified

Elevator Equipment for heavy duty use in elevators, refrigerators and heating installations in Canada.

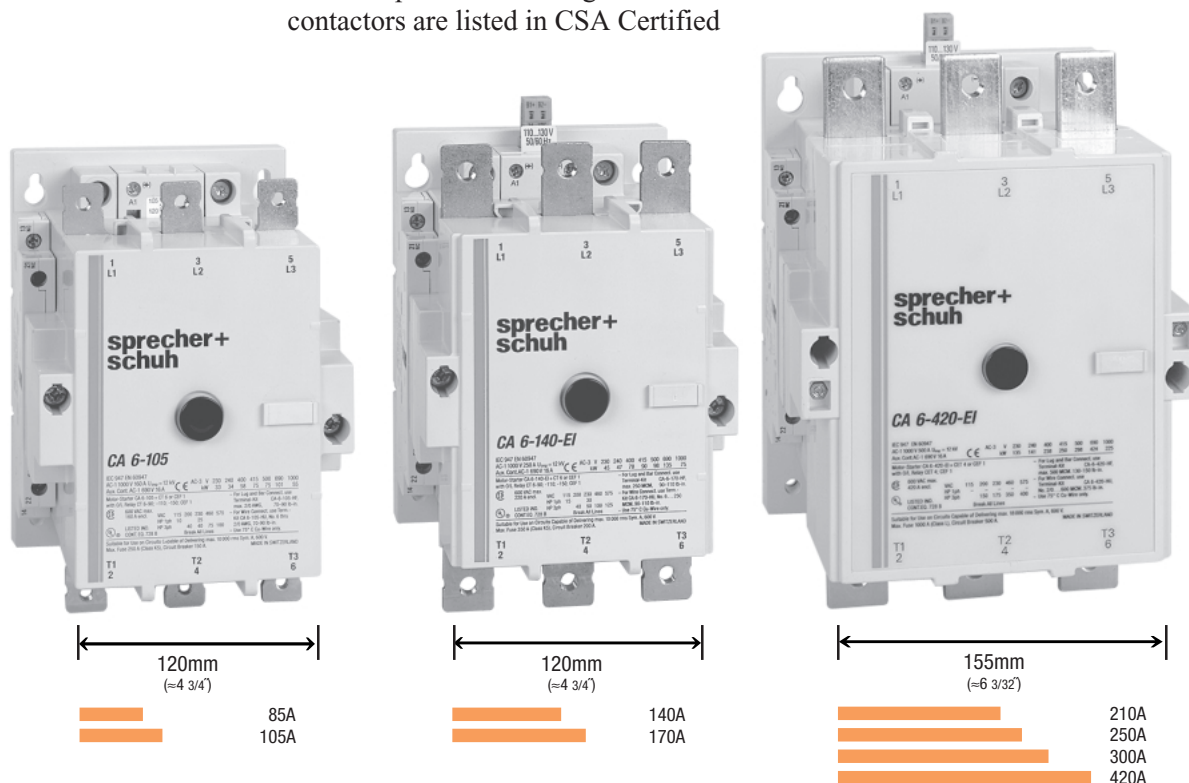
Arc quenching extends contact life

All CA6 contactors are designed with sophisticated arc quenching techniques that extinguish damaging breaking arcs quickly. This is accomplished by guiding the arc away from the contacts and into "arc chambers" which are built-in to every CA6 cover.

Safety first

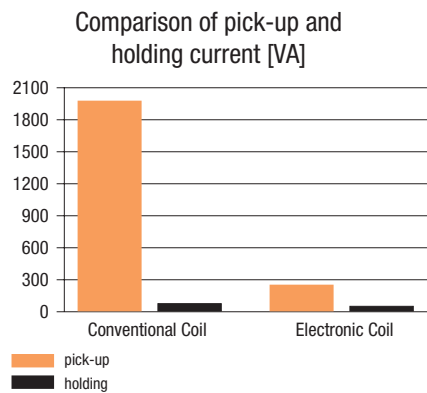
CA6 arc chambers are completely enclosed (without arc exhaust vents), offering the best protection against hot arcing gases. A large safety distance in front of the contactor is unnecessary. CA6 contactors are also designed so that operation is impossible if the arc chambers are removed. Conversely, once the contactor is energized, the arc chambers cannot be removed.

When used with terminal covers, CA6 contactors meet the strictest international standards for touch-safe design.



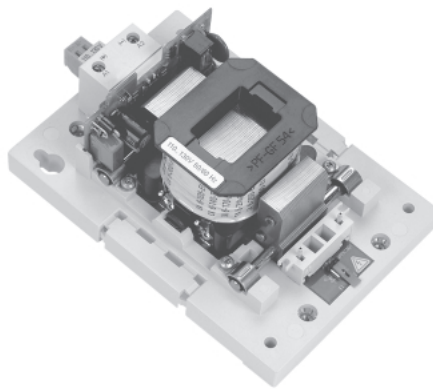
Electronic coils offer many advantages

Behind the attractive outward appearance of the CA6 contactor are advanced engineering solutions that offer convenience and savings. The CA6-105-EI through 420-EI incorporate an electronically controlled coil that reduces pick-up currents by 60% on average. Holding current is also reduced.



Other advantages of the CA6 electronic coil include:

- Direct connection to a PLC
- Overvoltage protection and sup-



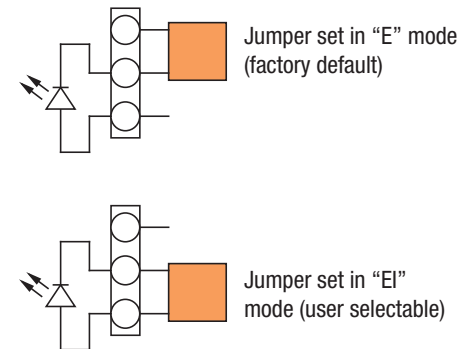
CA6 "EI" electronic coils offer many unique advantages over conventional types

pression circuits (eliminating interference from the coil) are standard

- Smooth, even operation over the entire voltage range minimizes the possibility of contact bounce
- No safeguards are necessary to bridge brief supply interruptions
- Precisely defined pick-up and drop-out voltages, eliminate the possibility of chattering
- Electronic coils operate over a much broader voltage range, providing flexibility in applications and lower costs due to reduced inventory

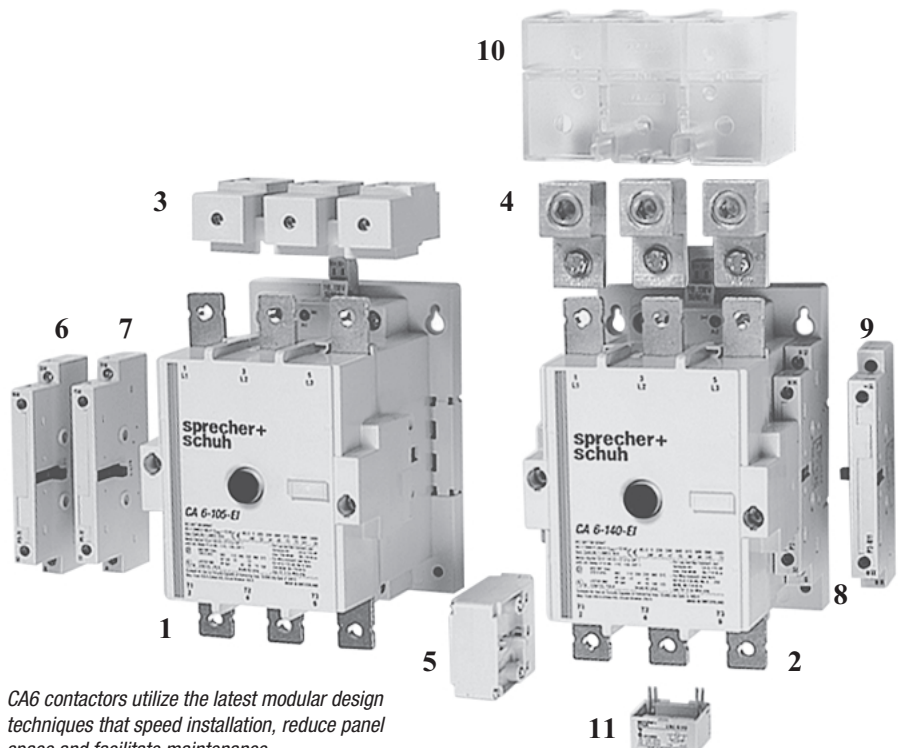
Two user-selectable modes

CA6 contactors with electronic coils operate in either the "E" mode for normal operation or the "EI" mode for interfacing directly with a Programmable Logic Controller (PLC) or other low level signal source (13...30.2 VDC). The coil is set in the "E" mode from the factory, offering all of the functions and advantages of an electronic coil with the exception of electronic interface. An orange "jumper" located on the bottom of the contactor can be quickly changed if interface from a PLC is desired. A detailed technical explanation of CA6-EI coils along with connection diagrams can be found on page A57.



The entire CA6 line is modularly designed for easy inspection, coil change and contact replacement. Maintenance can be performed from the front so that mounting requires no additional space. Even with the installation of mechanical interlocks and auxiliary contact blocks, the units can be flush mounted side by side, saving panel space.

- 1 CA6-105-EI Contactor
- 2 CA6-140-EI Contactor
- 3 Main Terminal Set
- 4 Lug set
- 5 Mechanical Interlock
- 6 Aux. Contact Block
- 7 Aux. Contact Block
- 8 Aux. Contact Block
- 9 Aux. Contact Block
- 10 Terminal Cover
- 11 Surge Suppressor



CA6 contactors utilize the latest modular design techniques that speed installation, reduce panel space and facilitate maintenance