



NK Technologies

## ASM Series



### Self-Calibrating Current Switches

#### Applications

##### Conveyors (-OL option)

- Detects jams and overloads.
- Interlocks multiple conveyor sections.

##### Electronic Proof of Flow (-UL option)

- No need for pipe or duct penetrations.
- More reliable than electro-mechanical pressure or flow switches

##### Lighting or Heating Circuits (-UL option)

- Fast and easy installation.

##### Pump Protection (-OU option)

- Provides overload (jams) and underload (suction loss) indication.

#### Features

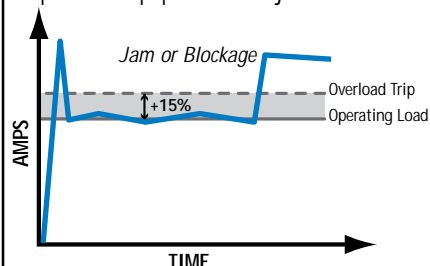
- **Self Calibrating Switch**  
Speeds startup.
- **Self-powered**  
Cuts installation costs.
- **Choose the Operating Style that Matches your Application**
  - **Status alarms** on underload, proving that equipment is running properly.
  - **Overload** protects against jams and blockages.
  - **Operating window** provides both status and overload in a single device.
- **Universal Output**  
AC or DC switching means compatibility with any automation system.
- **Compact**  
Fits in starters and panels.
- **UL, CUL and CE Approval**  
Accepted worldwide.

'ASM' Current Switches from NK Technologies combine a current transformer, signal conditioner and self-calibrating limit alarm into a single package. The ASM Series has an extended current input range, universal solid-state outputs and a wide frequency response. Available in a split core or top terminal solid core case.

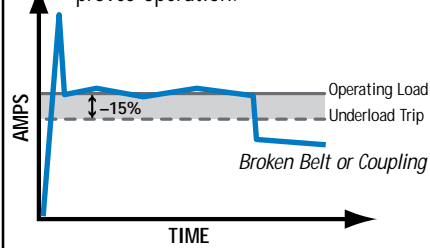
#### Operation

Choose the right operating type for your application:

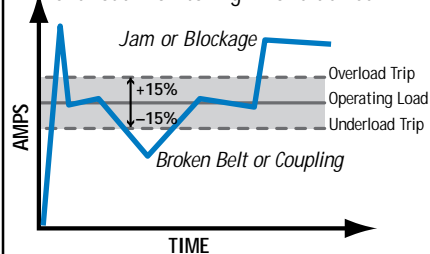
**Overload Monitoring (-OL option)**  
protects equipment from jams and stalls.



**Status Monitoring (-UL option)**  
proves operation.



**Operating Window (-OU option)**  
combines Status Monitoring and Overload Monitoring in one device.



Self-Calibrating Current Switches

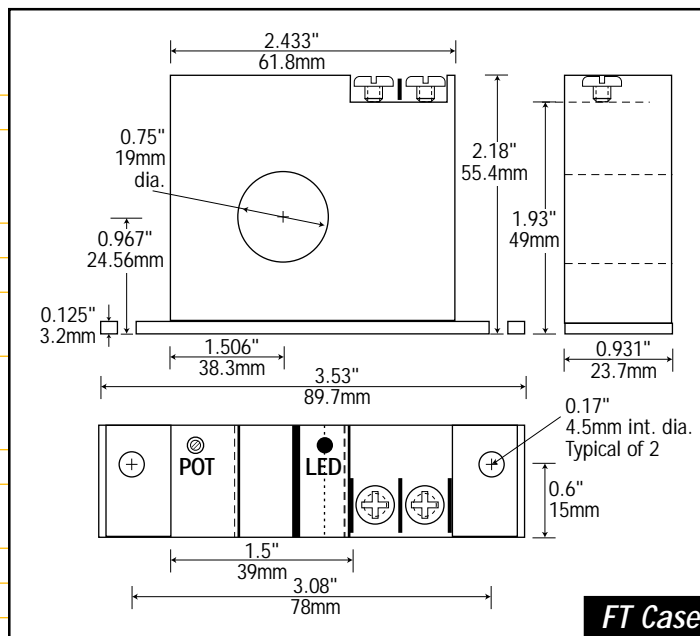
ASM Series

*Know your power...*

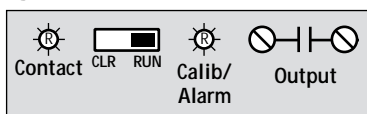
*because with knowledge comes control.*

## Specifications

|                   |   |            |       |        |
|-------------------|---|------------|-------|--------|
| Power Supply      | None — Self-powered   |            |       |        |
| Output            | Magnetically Isolated Solid-State Switch  |            |       |        |
| Output Rating     | <ul style="list-style-type: none"> <li>N.O. Version: 0.2 A @ 240VAC or VDC</li> <li>N.C. Version: 0.2 A @ 130VAC or VDC</li> <li>Not polarity sensitive</li> </ul>  |            |       |        |
| Off State Leakage | None  |            |       |        |
| Response Time     | 0.2 Second  |            |       |        |
| Setpoint Range    | <ul style="list-style-type: none"> <li>1.5–150A (Fixed Core)</li> <li>2.8–150A (Split Core)</li> </ul>  |            |       |        |
| Setpoint          | <ul style="list-style-type: none"> <li>Overload: +15% of Load (–OL)</li> <li>Underload: –15% of Load (–UL)</li> <li>Operating Window: +/-15% of Setpoint</li> </ul> |            |       |        |
| Hysteresis        | 5% of Setpoint  |            |       |        |
| Overload          | MODEL   | CONTINUOUS | 6 SEC | 1 SEC  |
|                   | All   | 150A       | 500A  | 1,000A |
| Isolation Voltage | UL Listed to 1,270VAC, tested to 5,000VAC   |            |       |        |
| Frequency Range   | 6–100Hz   |            |       |        |
| Sensing Aperture  | <ul style="list-style-type: none"> <li>–FT Case: 0.75" (19 mm) dia.</li> <li>–SP Case: 0.85" (21.5mm) sq.</li> </ul>  |            |       |        |
| Case              | UL 94V-0 Flammability rated   |            |       |        |
| Environmental     | –58 to 149°F (–50 to 65°C), 0–95% RH, non-condensing  |            |       |        |
| Listings          | UL 508 Industrial Control Equipment (USA & Canada), CE (Pending)  |            |       |        |



## Connections



### Notes:

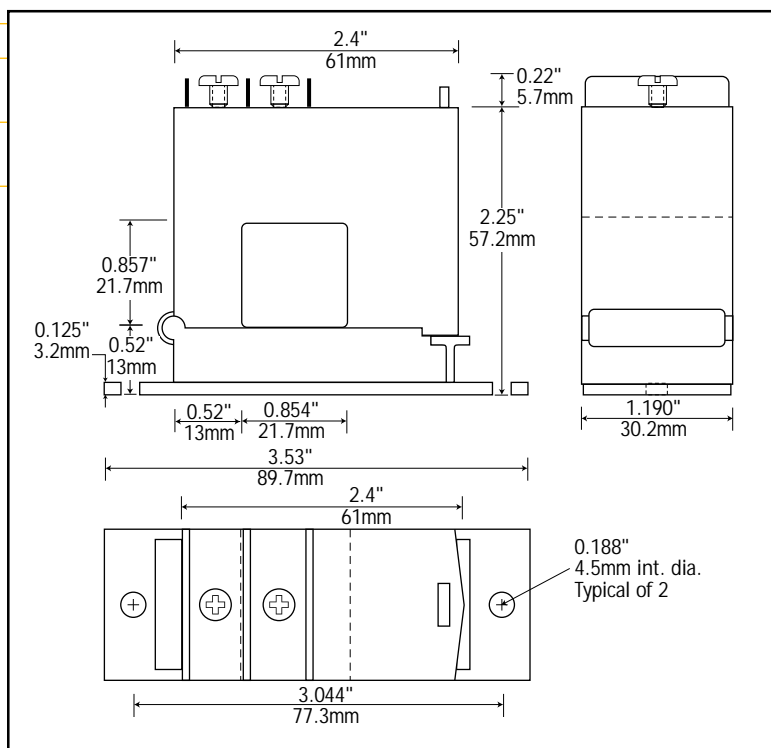
- Terminals are #6 screws.
- Smart LED standard.
- NOU shown, NCU similar.

## Ordering Information

Example: ASM-NOU-OL-SP

Adjustable universal AC current switch, normally open, self-calibrating overload operation in a split core case.

|     |                     |   |                                      |   |                          |
|-----|---------------------|---|--------------------------------------|---|--------------------------|
| ASM |                     | — |                                      | — |                          |
|     | Output Rating       |   | Operation                            |   | Case Style               |
|     | NOU Normally Open   |   | OL Overload                          |   | FT Fixed Core, Top Term. |
|     | NCU Normally Closed |   | UL Underload (Status)                |   | SP Split Core            |
|     |                     |   | OU Over/Underload (Operating Window) |   |                          |



**Self-Calibrating Current Switches**

**ASM Series**