



Wind Power Wire Connections & Circuit Protection Devices



Marathon Special Products has been an industry leader in electrical/electronic components designed for circuit protection and connection applications for over 60 years.

NACELLE

Marathon's products, including fuse holders, power blocks, terminal blocks and grounding lugs, are available for the nacelle, tower, utility and tower base applications.

NACELLE



Fuse Holders



Power Splicer Blocks



Grounding Lugs

TOWER

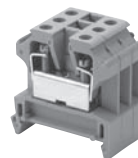


Power Stud Blocks



Grounding Lugs

TOWER BASE/UTILITY



DIN Rail Terminal Block



Finger Safe Power Distribution Blocks



Fuse Holders



Heavy Duty Terminal Blocks

UTILITY



TOWER

TOWER BASE

Components for Wind Power Applications

Nacelle

FUSE HOLDERS



- Fuse Holders for Fuse Classes H, R, J, T, M, G and CC
- Fuse Holder 1,000V rated for Class T and J 100, 200, 400 and 600 Amp fuses

POWER SPLICER BLOCKS



- Wire sizes #2 AWG up to dual 750 kcmil
- Greater than 600V ratings
- UL rated for flexible stranded wire
- Hinged Cover

GROUNDING LUGS



- Three sizes: 350 kcmil – #6 AWG, 2/0-14 AWG, #2-14 AWG
- UL rated for flexible stranded wire

Tower

POWER STUD BLOCKS



- Stud sizes up to 1/2"
- Greater than 600V ratings

GROUNDING LUGS



- Multiple tap grounding connectors
- UL rated for flexible stranded wire

Tower Base/Utility

FUSE HOLDERS



- Fuse Holders for Fuse Classes H, R, J, T, M, G and CC
- Fuse Holder 1,000V rated for Class T and J 100, 200, 400 and 600 Amp fuses

POWER DISTRIBUTION BLOCKS



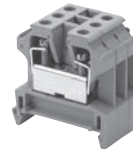
- Wire sizes #2 AWG up to 750 kcmil
- Greater than 600V ratings
- UL rated for flexible stranded wire
- Fingerproof IP20 protection

HEAVY DUTY TERMINAL BLOCKS



- Shorting blocks used for current transformers and switchgear applications

DIN RAIL TERMINAL BLOCKS



- Control circuit wiring terminal blocks
- Available in numerous sizes
- Amperage from 20 to 85A

Agency Compliance



RoHS/REACH Compliant



13300 Van Camp Road • P.O. Box 468 • Bowling Green, Ohio 43402
Phone: (419) 352-8441 • Fax: (419) 352-0875 • marketing@marathonsp.com

www.marathonsp.com

