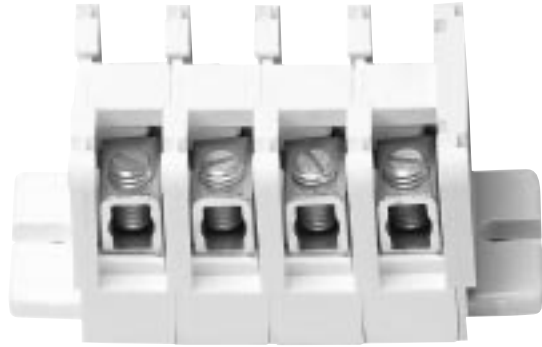




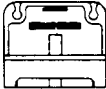
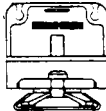
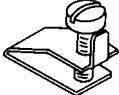


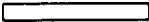
# Sectional Terminal Block

## 1/2" Sectional - 600 Volts 24 Circuits Per Foot



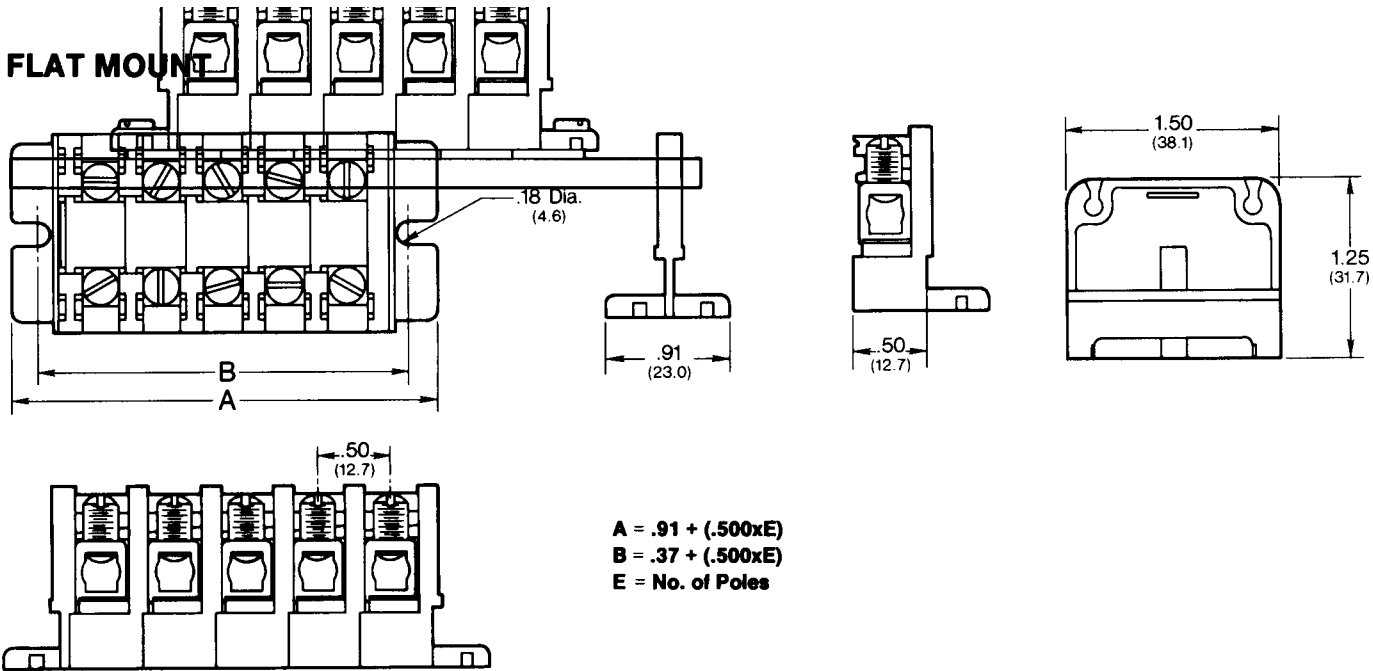
### Specifications

Base, White Nylon — Type 6/6 105°C  
 Water Absorption 0.9% (Per ASTM D-570) (24 Hrs. % Wt. Gain)  
 Tubular Screw (TSCU) Copper, Tin Plated, Screw #1/4-28 Steel, Nickle Plated,  
 Wire Range #16-#4 Awg Copper, 70 Amps  
 UL Recognized File No. E62806  
 CSA Certified File No. LR19766  
 CEC

| Catalog #  | Description                            |  | Std. Pack Qty. |
|--|--|--|----------------|
| 6H12-TSCU-F<br>For flat mount block                    | Tubular Screw                          |     | 50             |
| 6H12-TSCU-C<br>For channel mount block                 | Tubular Screw                          |    | 50             |
| 6H12-E-F<br>For flat mount block                       | End Section                            |   | 25             |
| 6H12-E-C<br>For channel mount block                    | End Section                            |   | 25             |
| MC   | Metal Clamp                            |   | 25             |
| J-12   | Jumper                                 |   | 50             |
| MPC-6<br>6 Foot channel<br><br>MPC-3<br>3 Foot channel | Channel                                |  | ----           |
| MS   | Vinyl Marking Strip<br>1/2" X 2' White |  | 25             |

# Sectional Terminal Block

## 1/2" Sectional



## CHANNEL MOUNT

