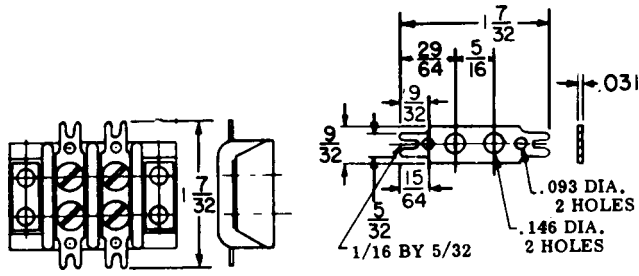


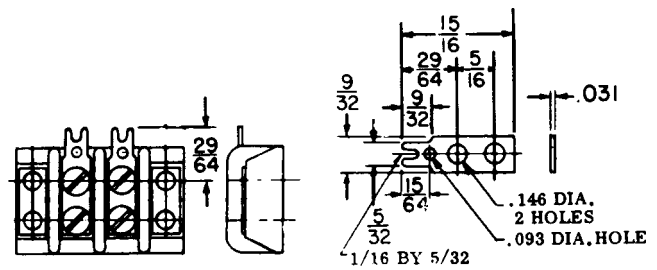
Kulka® Military Class (MIL-T-55164)

37TBLD (MIL-T- 55164/ 7)



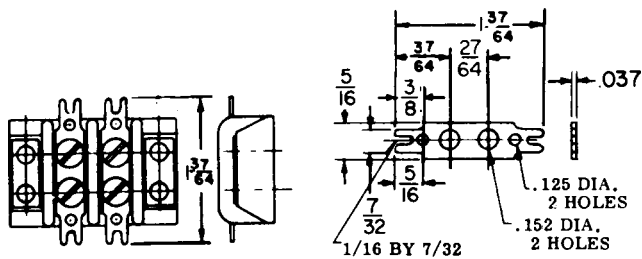
This is an assembly of the 37TB Class Terminal Board and a two-sided terminal lug (TBLD). Available in lengths from 2 terminal (37TBLD-2) through 31 terminals (37TBLD-31). Lugs are brass per QQ-B-613 and are tin plated.

37TBLS (MIL-T- 55164/ 7)



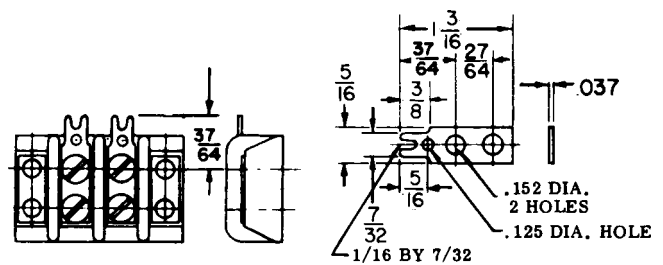
This is an assembly of the 37TB Class Terminal Board and a one-sided terminal lug (TBLS). Available in lengths from 2 terminal (37TBLS-2) through 31 terminals (37TBLS-31). Lugs are brass per QQ-B-613 and are tin plated.

38 TBLD (MIL-T- 55164/ 7)



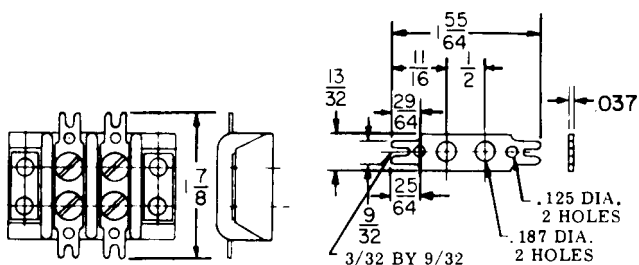
This is an assembly of the 38TB Class Terminal Board and a two-sided terminal lug (TBLD). Available in lengths from 2 terminal (38TBLD-2) through 23 terminals (38TBLD-23). Lugs are brass per QQ-B-613 and are tin plated.

38TBLS (MIL-T- 55164/ 7)



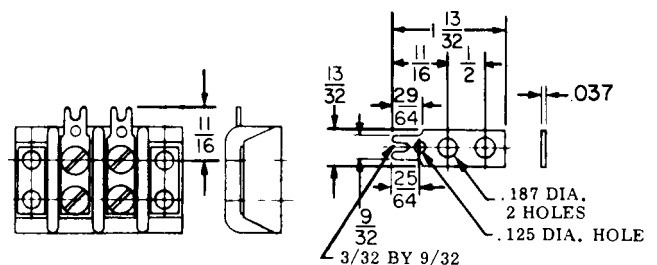
This is an assembly of the 38TB Class Terminal Board and a one-sided terminal lug (TBLS). Available in lengths from 2 terminals (38TBLS-2) through 23 terminals (38TBLS-23). Lugs are brass per QQ-B-613 and are tin plated.

39TBLD (MIL-T- 55164/ 7)



This is an assembly of the 39TB Class Terminal Board and a two-sided terminal lug (TBLD). Available in lengths from 2 terminal (39TBLD-2) through 18 terminals (39TBLD-18). Lugs are brass per QQ-B-613 and are tin plated.

39TBLS (MIL- T- 55164/ 7)



This is an assembly of the 39TB Class Terminal Board and a one-sided terminal lug (TBLS). Available in lengths from 2 terminal (39TBLS-2) through 18 terminals (39TBLS-18). Lugs are brass per QQ-B-613 and are tin plated.