

Accessories

Kulka® Fanning Strips

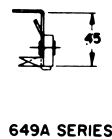
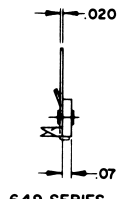
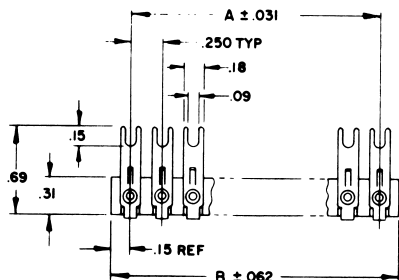
Specifications:

Terminals, Brass, Tin Plated

Material: XP = Phenolic, Black

GME = Glass Cloth Melamine, per MIL-M-14 Light Brown

649 SERIES FOR 410 & 411 SERIES TERMINAL BLOCKS



NO. OF TERM	A	B	NO. OF TERM	A	B
2	.250	.562	13	3.000	3.312
3	.500	.812	14	3.250	3.562
4	.750	1.062	15	3.500	3.812
5	1.000	1.312	16	3.750	4.062
6	1.250	1.562	17	4.000	4.312
7	2.000	1.812	18	4.250	4.562
8	2.250	2.062	19	4.500	4.812
9	2.500	2.312	20	4.750	5.062
10	2.750	2.562	21	5.000	5.312
11	3.000	2.812	22	5.250	5.562
12	3.250	3.062			

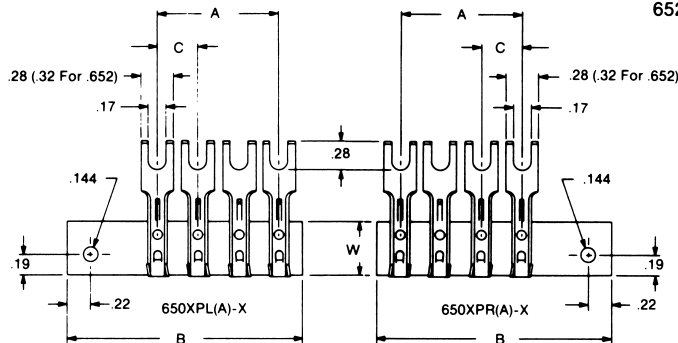
Available in XP phenolic only.

650 SERIES FOR 599, 600, 670A RZ SERIES TERMINAL BLOCKS

651 SERIES FOR 601 & 699 SERIES TERMINAL BLOCKS

652 SERIES FOR 602 & 812 SERIES TERMINAL BLOCKS

SERIES	W	SERIES
650	.50	650A
651	.63	651A
652	.63	652A



SERIES	C	NUMBER OF TERMINALS												
650	3	A	.375	.750	1.125	1.500	1.875	2.250	2.265	3.000	3.375	3.750	4.125	4.500
650A	8	B	1.435	1.810	2.185	2.560	2.935	3.310	3.685	4.060	4.435	4.810	5.185	5.560
651	7	A	.437	.875	1.312	1.750	2.187	2.625	3.062	3.500	3.937	4.375	4.812	5.250
651A	16	B	1.497	1.935	2.372	2.810	3.247	3.685	4.122	4.560	4.997	5.435	5.872	6.310
652	9	A	.562	1.125	1.687	2.250	2.812	3.375	3.937	4.500	5.062	5.625	6.187	6.750
652A	16	B	1.622	2.185	2.747	3.310	3.872	4.435	4.997	5.560	6.122	6.685	7.247	7.810

SERIES	C	NUMBER OF TERMINALS													
650	3	A	4.875	5.250	5.625	6.000	6.375	6.750	7.125	7.500	7.875	X	X	X	X
650A	8	B	5.935	6.310	6.685	7.060	7.435	7.810	8.186	8.560	8.935	X	X	X	X
651	7	A	5.687	6.125	6.562	7.000	7.437	7.875	8.312	8.750	9.187	9.625	X	X	X
651A	16	B	6.747	7.185	7.622	8.060	8.497	8.935	9.372	9.810	10.247	10.685	X	X	X
652	9	A	7.312	7.875	8.437	9.000	9.562	10.125	10.687	11.250	11.812	12.375	12.937	13.500	14.062
652A	16	B	8.372	8.935	9.497	10.060	10.622	11.185	11.747	12.310	12.872	13.435	13.997	14.560	15.122

ORDERING CODE EXAMPLE

For convenience and accuracy in ordering, please specify catalog numbers as shown.

SERIES	MAT. CODE	ANGLE	NO. OF TERM
649	XP	A	5

- FOR MARKER STRIPS USE A "MS" PREFIX ON THE SERIES
- FOR INSULATOR STRIPS USE AN "IS" PREFIX ON THE SERIES