

Class H and R Fuse Holder Dimensions

FIGURE A														
		B	C	D	E	F	G	H	I	J	K			
F30A RF30A R30A	1 pole 2 pole 3 pole	SEE FIGURE #1												
F60A RF60A R60A	1 pole 2 pole 3 pole	FIG2	4.83	1.48 2.86 4.23	2.01	1.24	1.8	0.5	0.49	1.33	NA	NA	.218 DIA THRU .40 DIA X .63 C'Bore	
RF100A R100A	1 pole 2 pole 3 pole	FIG2	6.12	1.93 3.49 5.05	2.44	2.37	1.87	0.62	0.61	1.56	NA	NA	.28 DIA THRU .53 DIA X .59 C'Bore	
F200A R200A	1 pole 2 pole 3 pole	FIG 4	7.13	3.00 9.00	3.01	3.00	2.06	2.00	0.5	8.00	NA	NA	NA	
RF400A R400A	1 pole 2 pole 3 pole	FIG 5	11.5	3.5 10.5	3.31	4.00	3.75	2.25 9.25	0.62	NA	NA	NA	NA	
F600A R600A	1 pole 2 pole 3 pole	FIG 5	14	4.5 12.5	4.31	5	4.5	3 11	0.75	NA	NA	NA	NA	
6F30A R6F30A 6R30A	1 pole 2 pole 3 pole	FIG 3	6.25	1.63 2.94 4.25	1.69	3.13	1.56	0.31 NA NA	0.62	0.51 0.38 0.25	NA 1.56 3.13	0.34 NA NA	.265 DIA THRU .50 DIA X .44 C'Bore	
6F60A R6F60A 6R60A	1 pole 2 pole 3 pole	FIG 3	6.75	1.95 3.51 5.08	2.12	3.12	1.81	NA	0.62	0.66	NA 1.56 3.12	NA	.281 DIA THRU .50 DIA C'Bore	
R6F100A 6R100A	1 pole 2 pole 3 pole	FIG 3	8.12	2.1 3.91 5.73	2.6	4.26	1.94	NA	0.87	0.61	NA 1.81 3.62	NA	.281 DIA THRU .59 DIA X .64 C'Bore	
6F200A 6R200A	1 pole 2 pole 3 pole	FIG 4	9.63	3 9	3.01	3	3.31	2	0.5	8	NA	NA	NA	
R6F400A 6R400A	1 pole 2 pole 3 pole	FIG 5	14.5	3.5 10.5	3.31	7	3.75	2.25 9.25	0.62	NA	NA	NA	5/16 HEX	
6F600A 6R600A	1 pole 2 pole 3 pole	FIG 5	17	4.5 12.5	4.31	8	4.5	3 11	0.75	NA	NA	NA	3/8 HEX	

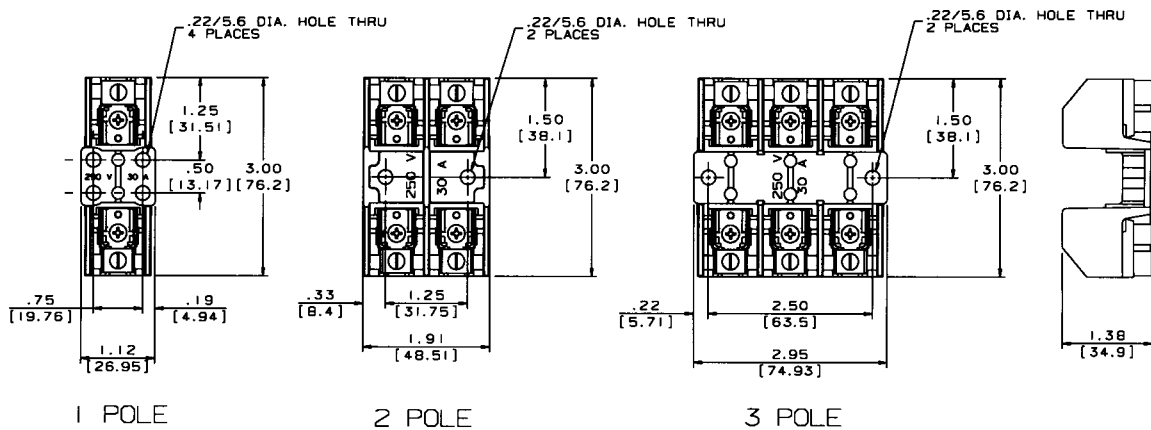


FIGURE 1

Class H and R Fuse Holder Dimensions

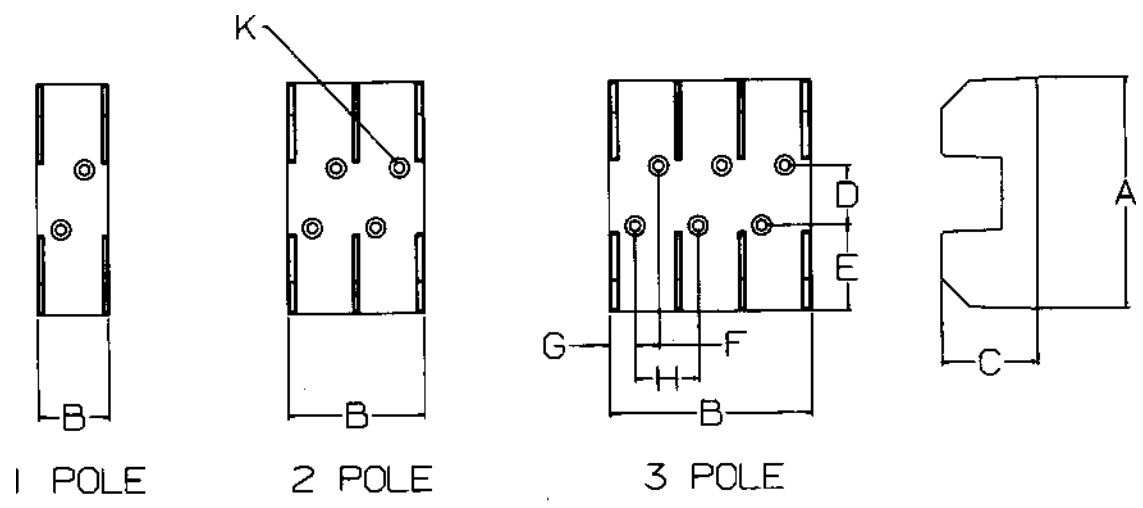


FIGURE 2

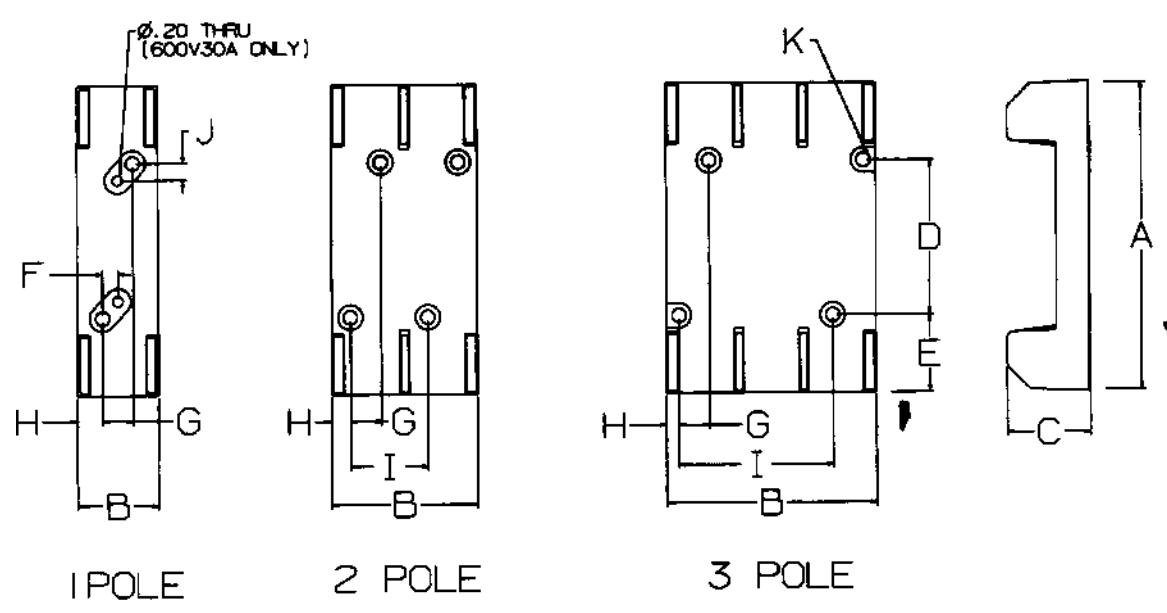


FIGURE 3

Class H and R Fuse Holder Dimensions

