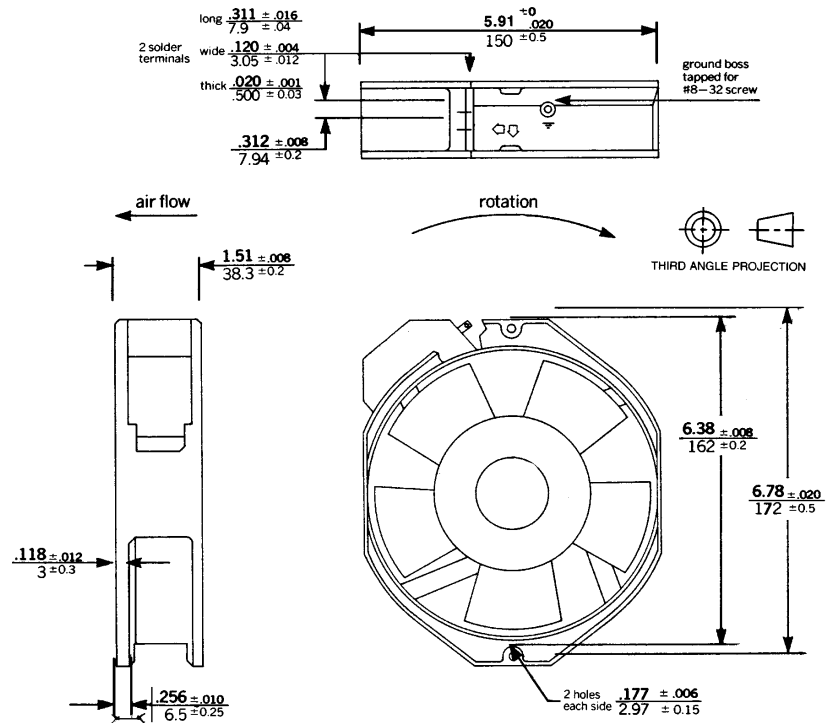


DC Fans



Model 148

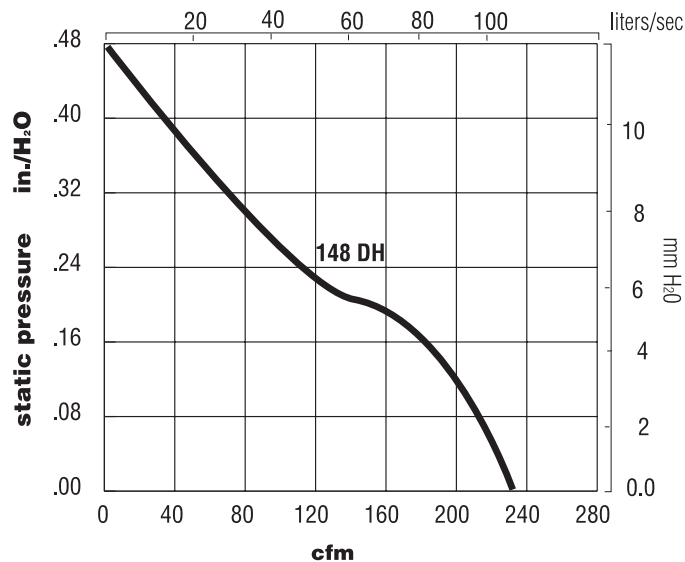
Size: 172 mm x 38 mm (6.77" x 1.5")



Part Number	Bearings	Voltage	Voltage Range	Current(mA)	Input(watts)	Noise(dBA)	Speed(rpm)	Airflow(cfm)	Air Pressure (In H2O)
148DH-1TM11-000	Ball	12	6-15	1080	13	57	3100	233	0.49
148DH-2TM11-000	Ball	24	19-28	683	16.4	58	3100	237.3	0.47
148DH-4TM11-000	Ball	48	40-57	340	16.3	58	3100	237.3	0.47

Optional frequency generator or rotation detector versions available. Consult factory.

148DH Performance Curve



ETRI Model 148 DC FANS

Size: 172 mm x 38 mm (6.77" x 1.5")



ELECTRICAL SPECIFICATIONS

Item	Specification	Conditions/Tolerances
Motor type	DC	brushless
Input current	at nominal voltage	±20%
Input power	at nominal voltage	±20%
Max air flow / Back pressure	All tested in submerged orifice chamber	±6% cfm/±12% pressure
Dielectric strength	12V	3.5mA leakage @ 600VAC
	24V	3.5mA leakage @ 600VAC
	48V	3.5mA leakage @1100VAC
Electrical connection	.110 fast on	5 seconds between frame and (+) terminal
Speed	at nominal voltage	±6%

MECHANICAL SPECIFICATIONS

Item	Specification	Conditions/Tolerances
Life expectancy	40,000 hrs	continuous operation @ 25°C
Bearing	ball bearing	top and bottom
Airflow direction	air intake over impeller	
Housing material	zinc die cast housing	
Mounting type	flange	
Impeller	PBT plastic - glass fiber	UL 94V-0
Weight	.770 kg (43.2 oz)	
Rotation	counter-clockwise from nameplate	

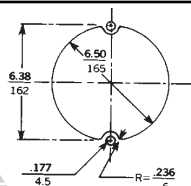
ENVIRONMENTAL SPECIFICATIONS

Item	Specification	Conditions/Tolerances
Operating temperature	- 10 to + 55°C (24 and 48V) - 10 to + 70°C (12V)	
Storage temperature	- 40 to + 70°C (24 and 48V) - 40 to + 85°C (12V)	
Shock test	30g peak acceleration	duration - 11 ms (Mil Std 202-method 213B)
Vibration test	x,y,z direction	10-55Hz, amplitude 0.35mm or 5g (Mil Std 202-method 201A or 204C)
Acoustical	anechoic chamber at free air	microphone - 1 meter away

PROTECTION

Item	Specification	Conditions/Tolerances
Locked rotor	impedance protected	100 hours at rated voltage
Polarity protected	will withstand pos and neg lead reversal	
Insulation class	UL class B	
Auto restart	automatic restart by timer	12 volt only
Agency approvals	UL, CSA, CE on 24 and 48 VDC	VDE pending
	UL, CE on 12 VDC	CSA, VDE pending
Warranty	3 years	

PANEL CUT-OUT



ACCESSORIES

ETRI fans are available with a wide range of accessories, from finger guards to filter assemblies to special termination. Request our accessories brochure or call your nearest distributor for complete details.



1503, Rocky River Road North
Monroe, NC 28110 USA
Tel: 704.289.5423
Fax: 704.283.7170

9-11, rue de Moulin des Bruyères
92400 Courbevoie FRANCE
Tel: (33-1) 49 04 92 00
Fax: (33-1) 47 89 09 38

Website: <http://www.etrinet.com> Email: sales@etrinet.com