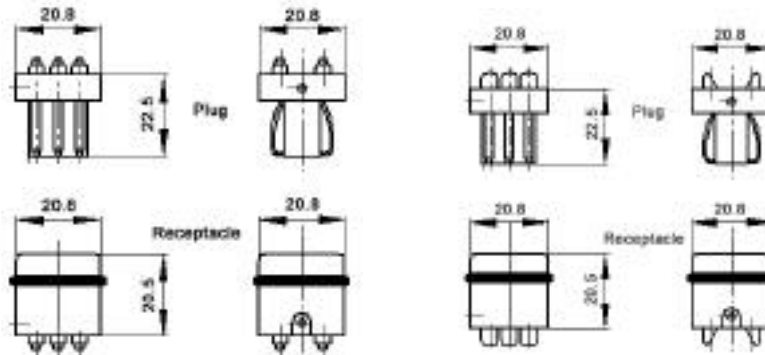


Rectangular Connectors STA Series

1

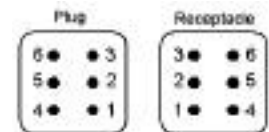
Screw Termination



Solder Termination



View from cable side



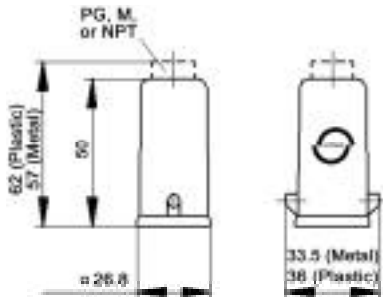
All dimensions are in mm.

These inserts fit in the HA 3/4 Series Housings which are on the following pages.

	Plug	Receptacle
Screw Termination	10.4881	10.4861
Solder Termination	10.4872	10.4852

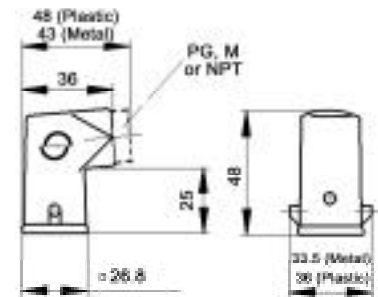
HA 3 & 4 HOODS WITH SINGLE LEVER BOLTS

TOP ENTRY



All dimensions are in mm.

SIDE ENTRY



All dimensions are in mm.

TOP ENTRY

Material	Size of Entry			Without Cable Gland			With Cable Gland			Strain Relief		
	PG	NPT	Metric	PG Part #	NPT Part #	Metric Part #	PG Part #	NPT Part #	Metric Part #	PG	NPT	M
Zinc Die Cast	11	1/2"	20	10.5121	10.5121NP	19.5121	10.4265	10.4265NP	19.4265	⬤	⬤	⬤
Black Plastic	11	1/2"	20	10.4255	10.4255NP	19.4255	10.4267	10.4267NP	-	⬤	⬤	⬤
Grey Plastic	11	1/2"	20	10.4260	10.4260NP	19.4260	10.4264	10.4264NP	-	⬤	⬤	⬤

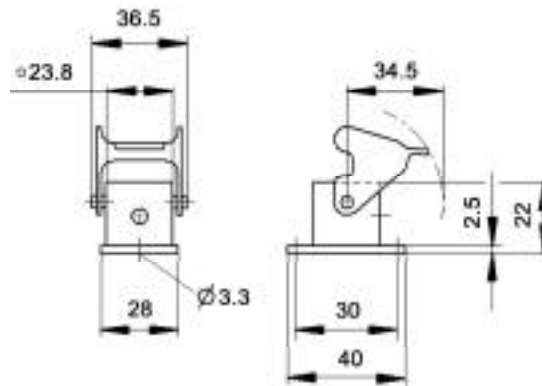
SIDE ENTRY

Material	Size of Entry			Without Cable Gland			With Cable Gland			Strain Relief		
	PG	NPT	Metric	PG Part #	NPT Part #	Metric Part #	PG Part #	NPT Part #	Metric Part #	PG	NPT	M
Zinc Die Cast	11	1/2"	20	10.5123	10.5123NP	19.5123	10.4275	10.4275NP	19.4275	⬤	⬤	⬤
Black Plastic	11	1/2"	20	10.4273	10.4273NP	19.4273	10.6206	10.6206NP	-	⬤	⬤	⬤
Grey Plastic	11	1/2"	20	10.4270	10.4270NP	19.4270	10.4271	10.4271NP	-	⬤	⬤	⬤

www.contactelectronics.com
800-221-1451

Rectangular Connectors STA Series

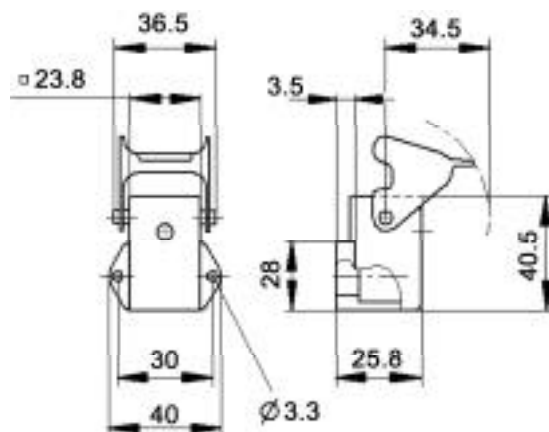
HA 3 & 4 PANEL MOUNT BASES WITH SINGLE LEVER



All dimensions are in mm.

	Grey Metal	Black Plastic	Grey Plastic
Panel Mount	10.4225	10.4222	10.4220

HA 3 & 4 ANGLED PANEL MOUNT BASES WITH SINGLE LEVER



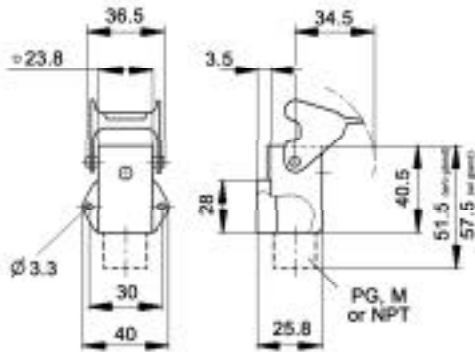
All dimensions are in mm.

	Grey Metal	Black Plastic	Grey Plastic
Angled Panel Mount	10.4235	10.4231	10.4230

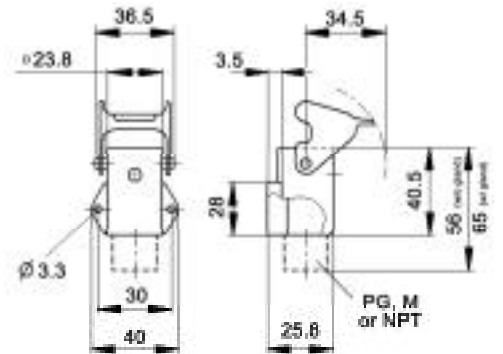
Rectangular Connectors STA Series

HA 3 & 4 SURFACE MOUNT BASES WITH SINGLE LEVER

METAL



PLASTIC

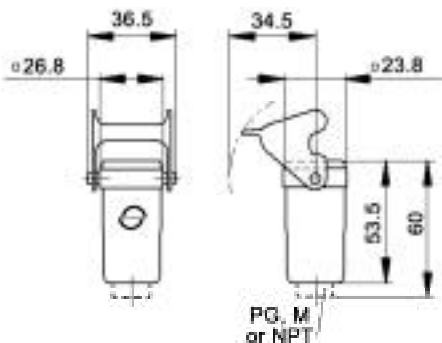


All dimensions are in mm.

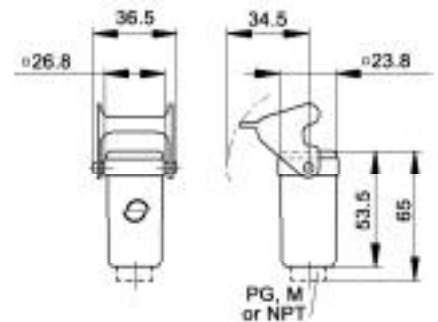
Material	Size of Entry			Without Cable Gland			With Cable Gland			Strain Relief		
	PG	NPT	Metric	PG Part #	NPT Part #	Metric Part #	PG Part #	NPT Part #	Metric Part #	PG	NPT	M
Zinc Die Cast	11	1/2"	20	10.5127	10.5127NP	19.5127	10.4245	10.4245NP	19.4245	○	■	▲
Black Plastic	11	1/2"	20	10.5117	10.5117NP	19.5118	10.4247	10.4247NP	-	○	■	▲
Grey Plastic	11	1/2"	20	10.4240	10.4240NP	19.4241	10.4242	10.4242NP	-	○	■	▲

HA 3 & 4 CABLE COUPLER HOODS WITH SINGLE LEVERS

METAL



PLASTIC



All dimensions are in mm.

Material	Size of Entry			Without Cable Gland			With Cable Gland			Strain Relief		
	PG	NPT	Metric	PG Part #	NPT Part #	Metric Part #	PG Part #	NPT Part #	Metric Part #	PG	NPT	M
Zinc Die Cast	11	1/2"	20	10.5129	10.5129NP	19.5129	10.4295	10.4295NP	19.4295	○	■	▲
Black Plastic	11	1/2"	20	10.4292	10.4292NP	19.4292	10.6203	10.6203NP	-	○	■	▲
Grey Plastic	11	1/2"	20	10.4290	10.4290NP	19.4290	10.4291	10.4291NP	-	○	■	▲

www.contactelectronics.com
800-221-1451