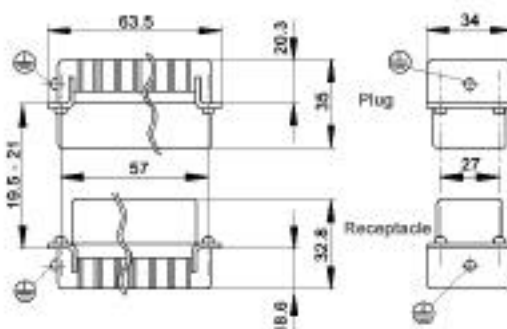
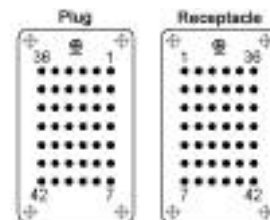


# Rectangular Connectors HDD Series

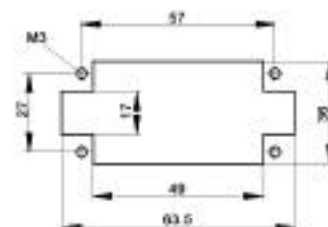
## HDD 42 CRIMP TERMINATED: MACHINE CONTACT



View from Cable Side



Panel Cut-Out



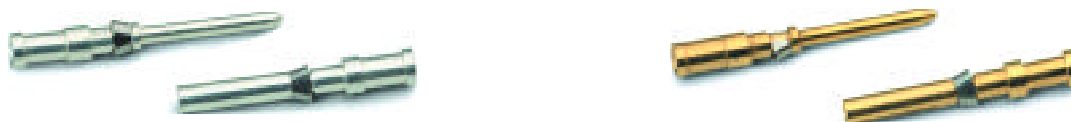
All dimensions are in mm.

These inserts fit in the HBE  
10 Series Housings which  
are on the following pages.

Plug	Receptacle
11.2851	11.2861

Contacts Sold Separately

## HDD MACHINED CONTACTS: DIAMETER 1.6 MM



Bags of 100							
mm2	AWG	Silver			Gold		
		Pin	Socket	Stripping Length	Pin	Socket	Stripping Length
0.14 - 0.37	26 - 22	13.1620	13.1630	8	13.1625	13.1635	8
0.5	20	13.1621	13.1631	8	13.1626	13.1636	8
0.75 - 1.0	18	13.1622	13.1632	8	13.1627	13.1637	8
1.5	16	13.1623	13.1633	8	13.1628	13.1638	8
2.5	14	13.1624	13.1634	5.8	-	-	-

## TOOLS



Locator  
11.1472



Crimp Dies  
11.1471



Crimp Tool  
11.1470



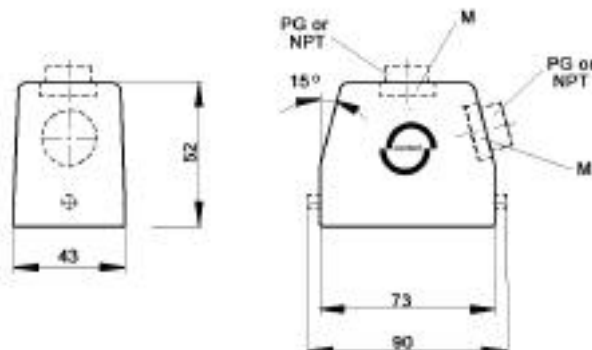
Removal Tool:  
11.1610

[www.contactelectronics.com](http://www.contactelectronics.com)  
800-221-1451

# Rectangular Connectors HDD Series

## HBE 10 HOODS WITH SINGLE LEVER BOLTS

TOP ENTRY



SIDE ENTRY



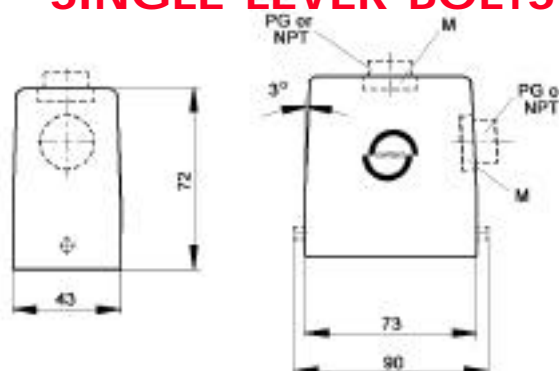
All dimensions are in mm.

Position of Cable Entry	Size of Entry			Standard Grey Coating			Black Coating (NEMA 4X)			Strain Relief		
	PG	NPT	Metric	PG Part #	NPT Part #	Metric Part #	PG Part #	NPT Part #	Metric Part #	PG	NPT	M
Top Entry	16	1/2"	20	10.0409	10.0409NP	19.0409	70.0490	70.0490NP	79.0490	●	■	▲
	21	3/4"	25	10.0407	10.0407NP	19.0407	70.0496	70.0496NP	79.0496	●	■	▲
Side Entry	16	1/2"	20	10.0429	10.0429NP	19.0429	70.0590	70.0590NP	79.0590	●	■	▲
	21	3/4"	25	10.0428	10.0428NP	19.0428	70.0596	70.0596NP	79.0596	●	■	▲

Metric hoods do not come with a neck.

## HBE 10 HIGH PROFILE HOODS WITH SINGLE LEVER BOLTS

TOP ENTRY



SIDE ENTRY



All dimensions are in mm.

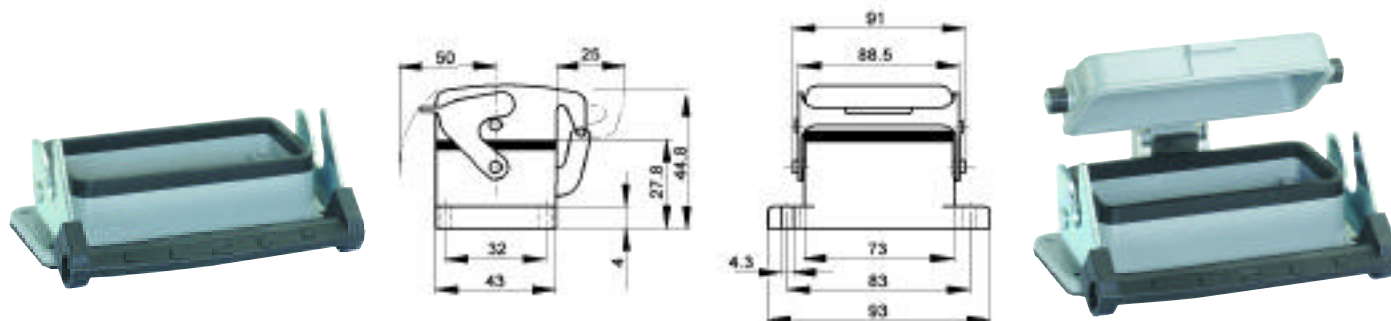
Position of Cable Entry	Size of Entry			Standard Grey Coating			Black Coating (NEMA 4X)			Strain Relief		
	PG	NPT	Metric	PG Part #	NPT Part #	Metric Part #	PG Part #	NPT Part #	Metric Part #	PG	NPT	M
Top Entry	21	3/4"	25	70.0442	70.0442NP	79.0442	70.0492	70.0492NP	79.0492	●	■	▲
	29	1"	32	70.0444	70.0444NP	79.0444	70.0494	70.0494NP	79.0494	●	■	▲
Side Entry	21	3/4"	25	70.0542	70.0542NP	79.0542	70.0592	70.0592NP	79.0592	●	■	▲
	29	1"	32	70.0544	70.0544NP	79.0544	70.0594	70.0594NP	79.0594	●	■	▲

Metric hoods do not come with a neck.

[www.contactelectronics.com](http://www.contactelectronics.com)  
800-221-1451

# Rectangular Connectors HDD Series

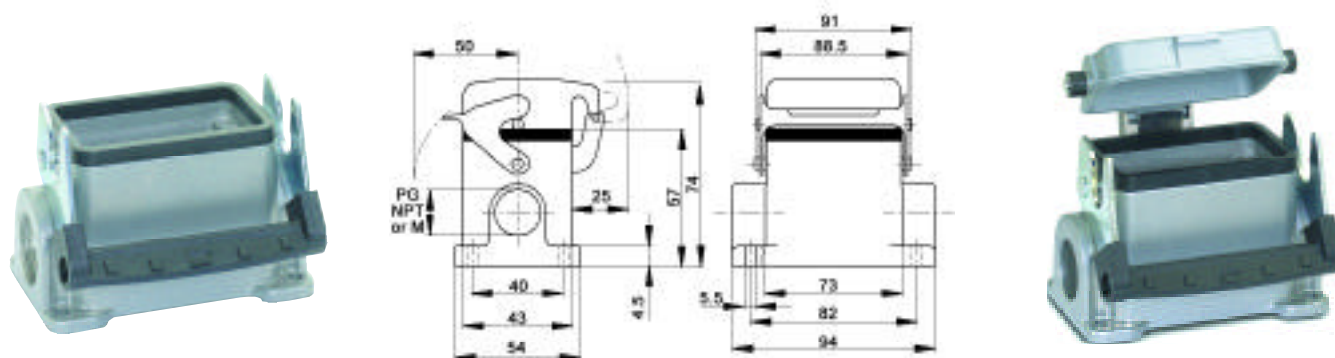
## HBE 10 PANEL MOUNT BASES WITH SINGLE LEVER



All dimensions are in mm.

Description	Standard Grey Coating	Black Coating (NEMA 4X)
Panel Mount without Dust Cover	10.0329	70.0327
Panel Mount with Dust Cover	10.0339	70.0337

## HBE 10 SURFACE MOUNT BASES WITH SINGLE LEVER



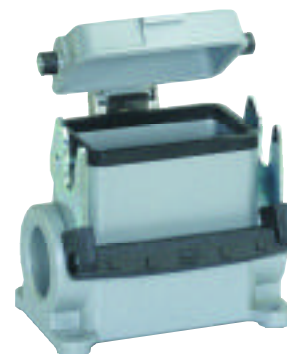
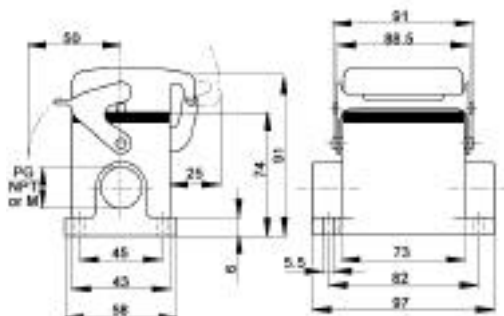
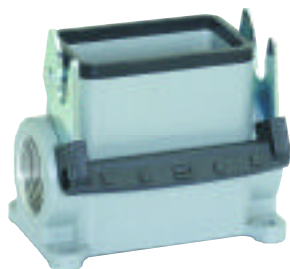
All dimensions are in mm.

# of Entries	Size of Entry			Standard Grey Coating			Black Coating (NEMA 4X)			Strain Relief		
	PG	NPT	Metric	PG Part #	NPT Part #	Metric Part #	PG Part #	NPT Part #	Metric Part #	PG	NPT	M
2 Entries	16	1/2"	20	10.0359	10.0359NP	19.0359	70.0630	70.0630NP	79.0630	●	■	▲
			25	-	-	79.0616	-	-	79.0636			▲
1 Entry	16	1/2"	20	10.0349	10.0349NP	19.0349	70.0620	70.0620NP	79.0620	●	■	▲
	21	3/4"	25	10.0347	10.0347NP	19.0347	-	-	79.0626			▲
2 Entries with dust cover	16	1/2"	20	10.0389	10.0389NP	19.0389	70.0670	70.0670NP	79.0670	●	■	▲
			25	-	-	79.0656	-	-	79.0676			▲
1 Entry with dust cover	16	1/2"	20	10.0369	10.0369NP	19.0369	70.0660	70.0660NP	79.0660	●	■	▲
			25	-	-	79.0646	-	-	79.0666			▲

[www.contactelectronics.com](http://www.contactelectronics.com)  
800-221-1451

# Rectangular Connectors HDD Series

## HBE 10 HIGH PROFILE SURFACE MOUNT BASES WITH SINGLE LEVER

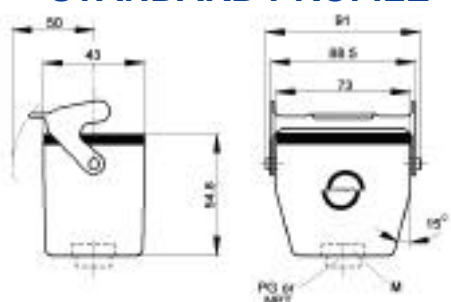


All dimensions are in mm.

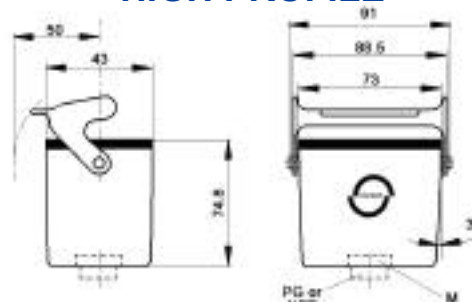
# of Entries	Size of Entry			Standard Grey Coating			Black Coating (NEMA 4X)			Strain Relief		
	PG	NPT	Metric	PG Part #	NPT Part #	Metric Part #	PG Part #	NPT Part #	Metric Part #	PG	NPT	M
2 Entries	21	3/4"	25	70.0612	70.0612NP	79.0612	70.0632	70.0632NP	79.0632	●	■	▲
	29	1"	32	70.0614	70.0614NP	79.0614	70.0634	70.0634NP	79.0634	●	■	▲
1 Entry	21	3/4"	25	70.0602	70.0602NP	79.0602	70.0622	70.0622NP	79.0622	●	■	▲
	29	1"	32	70.0604	70.0604NP	79.0604	70.0624	70.0624NP	79.0624	●	■	▲
2 Entries with dust cover	21	3/4"	25	70.0652	70.0652NP	79.0652	70.0672	70.0672NP	79.0672	●	■	▲
	29	1"	32	70.0654	70.0654NP	79.0654	70.0674	70.0674NP	79.0674	●	■	▲
1 Entry with dust cover	21	3/4"	25	70.0642	70.0642NP	79.0642	70.0662	70.0662NP	79.0662	●	■	▲
	29	1"	32	70.0644	70.0644NP	79.0644	70.0664	70.0664NP	79.0664	●	■	▲

## HBE 10 CABLE COUPLER HOOD WITH SINGLE LEVER

### STANDARD PROFILE



### HIGH PROFILE



All dimensions are in mm.

Profile	Size of Entry			Standard Grey Coating			Black Coating (NEMA 4X)			Strain Relief		
	PG	NPT	Metric	PG Part #	NPT Part #	Metric Part #	PG Part #	NPT Part #	Metric Part #	PG	NPT	M
Standard Profile	16	1/2"	20	10.0469	10.0469NP	19.0469	70.0430	70.0430NP	79.0430	●	■	▲
	21	3/4"	25	70.0422	70.0422NP	79.0422	70.0432	70.0432NP	79.0432	●	■	▲
High Profile	21	3/4"	25	70.0424	70.0424NP	79.0424	70.0434	70.0434NP	79.0434	●	■	▲
	29	1"	32	70.0426	70.0426NP	79.0426	70.0436	70.0436NP	79.0436	●	■	▲

Metric hoods do not come with a neck.

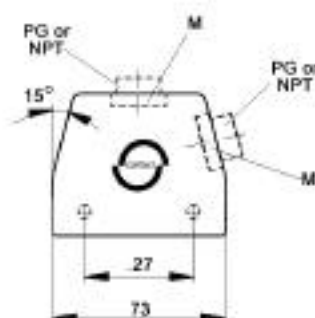
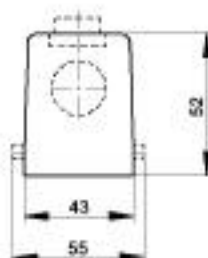
[www.contactelectronics.com](http://www.contactelectronics.com)  
800-221-1451



# Rectangular Connectors HDD Series

## HBE 10 HOODS WITH DOUBLE LEVER BOLTS

TOP ENTRY



SIDE ENTRY



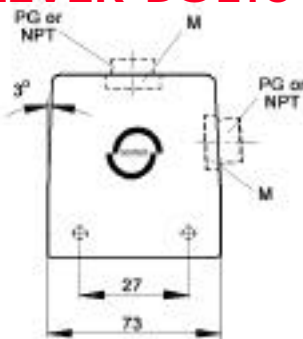
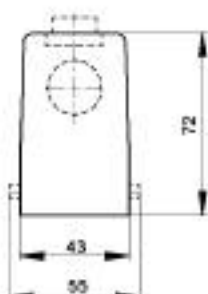
All dimensions are in mm.

Position of Cable Entry	Size of Entry			Standard Grey Coating			Black Coating (NEMA 4X)			Strain Relief		
	PG	NPT	Metric	PG Part #	NPT Part #	Metric Part #	PG Part #	NPT Part #	Metric Part #	PG	NPT	M
Top Entry	16	1/2"	20	10.0400	10.0400NP	19.0400	70.0510	70.0510NP	79.0510	●	■	▲
	21	3/4"	25	10.0401	10.0401NP	19.0401	70.0512	70.0512NP	79.0512	●	■	▲
Side Entry	16	1/2"	20	10.0420	10.0420NP	19.0420	70.0530	70.0530NP	79.0530	●	■	▲
	21	3/4"	25	10.0421	10.0421NP	19.0421	70.0532	70.0532NP	79.0532	●	■	▲

Metric hoods do not come with a neck.

## HBE 10 HIGH PROFILE HOODS WITH DOUBLE LEVER BOLTS

TOP ENTRY



SIDE ENTRY



All dimensions are in mm.

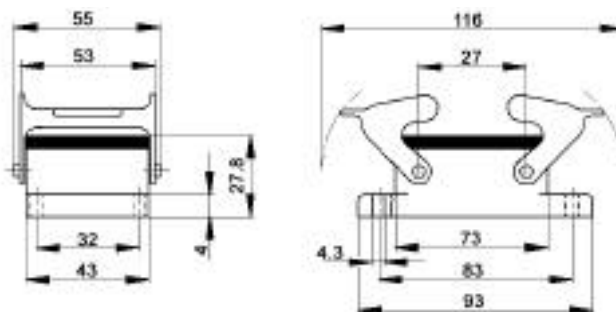
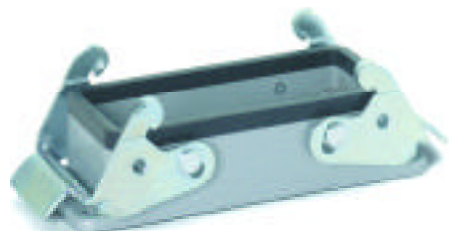
Position of Cable Entry	Size of Entry			Standard Grey Coating			Black Coating (NEMA 4X)			Strain Relief		
	PG	NPT	Metric	PG Part #	NPT Part #	Metric Part #	PG Part #	NPT Part #	Metric Part #	PG	NPT	M
Top Entry	21	3/4"	25	70.0504	70.0504NP	79.0504	70.0514	70.0514NP	79.0514	●	■	▲
	29	1"	32	70.0506	70.0506NP	79.0506	70.0516	70.0516NP	79.0516	●	■	▲
Side Entry	21	3/4"	25	70.0524	70.0524NP	79.0524	70.0534	70.0534NP	79.0534	●	■	▲
	29	1"	32	70.0526	70.0526NP	79.0526	70.0536	70.0536NP	79.0536	●	■	▲

Metric hoods do not come with a neck.

[www.contactelectronics.com](http://www.contactelectronics.com)  
800-221-1451

# Rectangular Connectors HDD Series

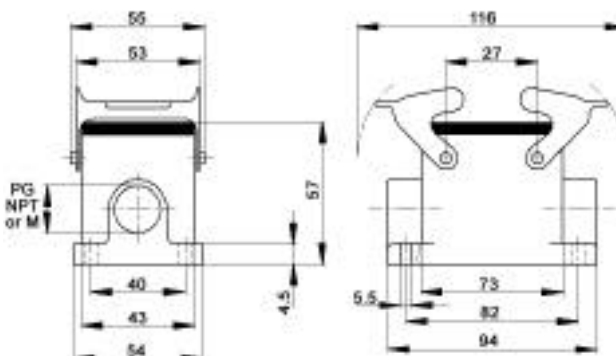
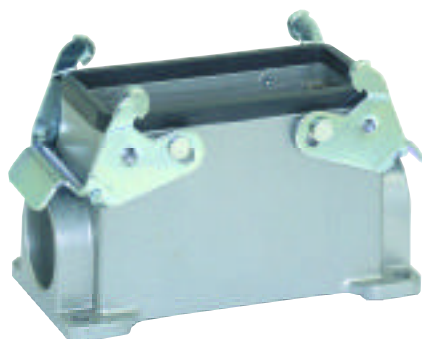
## HBE 10 PANEL MOUNT BASES WITH DOUBLE LEVERS



All dimensions are in mm.

Description	Standard Grey Coating	Black Coating (NEMA 4X)
Panel Mount without Dust Cover	10.0320	70.0325

## HBE 10 SURFACE MOUNT BASES WITH DOUBLE LEVERS



All dimensions are in mm.

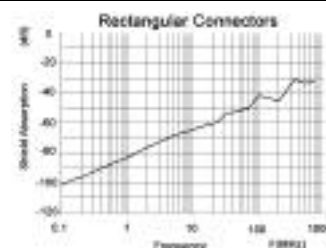
# of Entries	Size of Entry			Standard Grey Coating			Black Coating (NEMA 4X)			Strain Relief		
	PG	NPT	Metric	PG Part #	NPT Part #	Metric Part #	PG Part #	NPT Part #	Metric Part #	PG	NPT	M
2 Entries	16	1/2"	20	10.0350	10.0350NP	19.0350	70.0380	70.0380NP	79.0380	●	■	▲
			25	-	-	19.0351	-	-	79.0386			▲
1 Entry	16	1/2"	20	10.0340	10.0340NP	19.0340	70.0370	70.0370NP	79.0370	●	■	▲
			25	-	-	19.0341	-	-	79.0376			▲

## EMC PROTECTION



	PG/NPT	Metric
Panel Mount Base	70.3501	79.3501
Surface Mount & Cable Coupler Hood	70.3521	79.3521

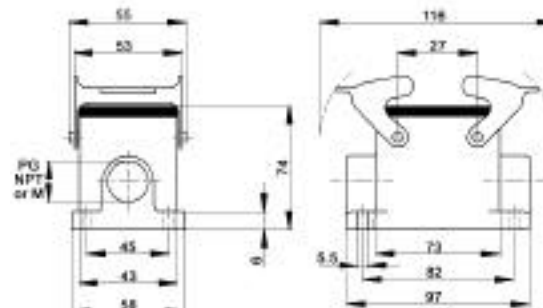
EMC Shielding is retrofittable.



[www.contactelectronics.com](http://www.contactelectronics.com)  
800-221-1451

# Rectangular Connectors HDD Series

## HBE 10 HIGH PROFILE SURFACE MOUNT BASES WITH DOUBLE LEVERS



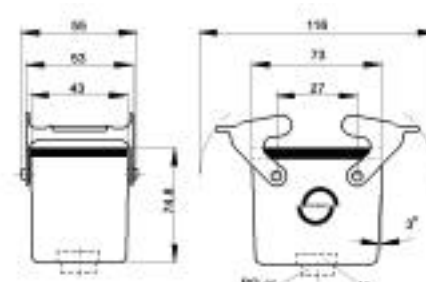
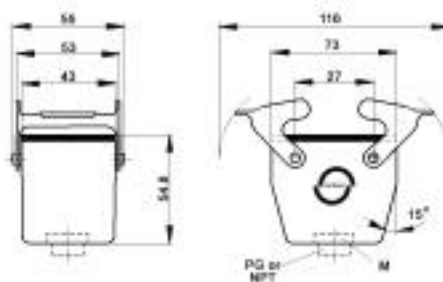
All dimensions are in mm.

# of Entries	Size of Entry			Standard Grey Coating			Black Coating (NEMA 4X)			Strain Relief		
	PG	NPT	Metric	PG Part #	NPT Part #	Metric Part #	PG Part #	NPT Part #	Metric Part #	PG	NPT	M
2 Entries	21	3/4"	25	70.0362	70.0362NP	79.0362	70.0382	70.0382NP	79.0382			
	29	1"	32	70.0364	70.0364NP	79.0364	70.0384	70.0384NP	79.0384			
1 Entry	21	3/4"	25	70.0352	70.0352NP	79.0352	70.0372	70.0372NP	79.0372			
	29	1"	32	70.0354	70.0354NP	79.0354	70.0374	70.0374NP	79.0374			

## HBE 10 CABLE COUPLER HOOD WITH DOUBLE LEVER

### STANDARD PROFILE

### HIGH PROFILE



All dimensions are in mm.

Profile	Size of Entry			Standard Grey Coating			Black Coating (NEMA 4X)			Strain Relief		
	PG	NPT	Metric	PG Part #	NPT Part #	Metric Part #	PG Part #	NPT Part #	Metric Part #	PG	NPT	M
Standard Profile	16	1/2"	20	10.0460	10.0460NP	19.0460	70.0410	70.0410NP	79.0410			
	21	3/4"	25	70.0402	70.0402NP	79.0402	70.0412	70.0412NP	79.0412			
High Profile	21	3/4"	25	70.0404	70.0404NP	79.0404	70.0414	70.0414NP	79.0414			
	29	1"	32	70.0406	70.0406NP	79.0406	70.0416	70.0416NP	79.0416			

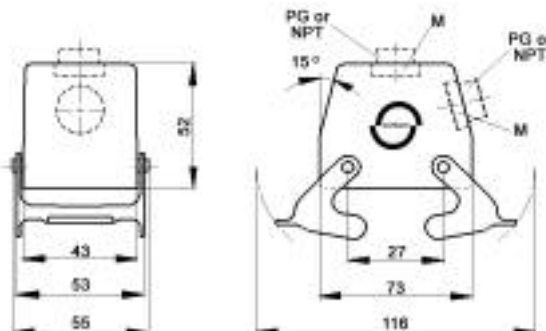
Metric hoods do not come with a neck.

[www.contactelectronics.com](http://www.contactelectronics.com)  
800-221-1451

# Rectangular Connectors HDD Series

## HBE 10 HOODS WITH DOUBLE LEVERS

TOP ENTRY



SIDE ENTRY



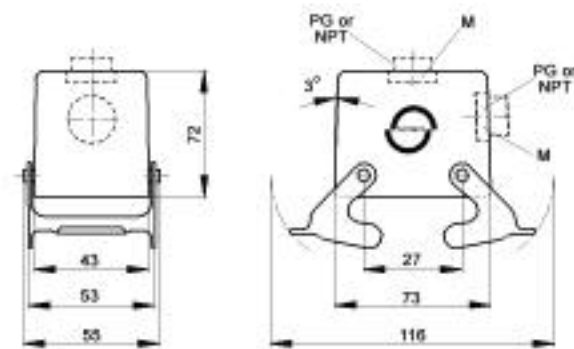
All dimensions are in mm.

Position of Cable Entry	Size of Entry			Standard Grey Coating			Black Coating (NEMA 4X)			Strain Relief		
	PG	NPT	Metric	PG Part #	NPT Part #	Metric Part #	PG Part #	NPT Part #	Metric Part #	PG	NPT	M
Top Entry	16	1/2"	20	10.0410	10.0410NP	19.0410	70.0560	70.0560NP	79.0560	●	■	▲
			25	-	-	79.0557	-	-	79.0566			▲
Side Entry	16	1/2"	20	10.0450	10.0450NP	19.0450	70.0580	70.0580NP	79.0580	●	■	▲
			25	-	-	79.0577	-	-	79.0586			▲

Metric hoods do not come with a neck.

## HBE 10 HIGH PROFILE HOODS WITH DOUBLE LEVERS

TOP ENTRY



SIDE ENTRY



All dimensions are in mm.

Position of Cable Entry	Size of Entry			Standard Grey Coating			Black Coating (NEMA 4X)			Strain Relief		
	PG	NPT	Metric	PG Part #	NPT Part #	Metric Part #	PG Part #	NPT Part #	Metric Part #	PG	NPT	M
Top Entry	21	3/4"	25	70.0552	70.0552NP	79.0552	70.0562	70.0562NP	79.0562	●	■	▲
		1"	32	70.0554	70.0554NP	79.0554	70.0564	70.0564NP	79.0564	●	■	▲
Side Entry	21	3/4"	25	70.0572	70.0572NP	79.0572	70.0582	70.0582NP	79.0582	●	■	▲
		1"	32	70.0574	70.0574NP	79.0574	70.0584	70.0584NP	79.0584	●	■	▲

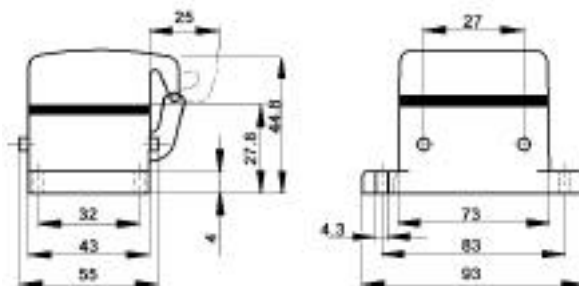
Metric hoods do not come with a neck.

[www.contactelectronics.com](http://www.contactelectronics.com)  
800-221-1451



# Rectangular Connectors HDD Series

## HBE 10 PANEL MOUNT BASES WITH DOUBLE LEVER BOLTS

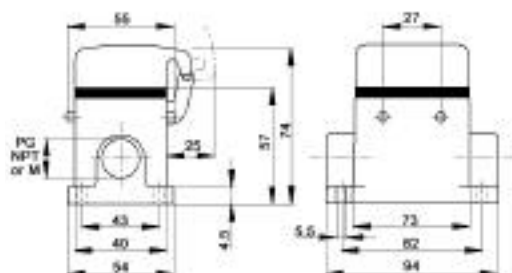


All dimensions are in mm.

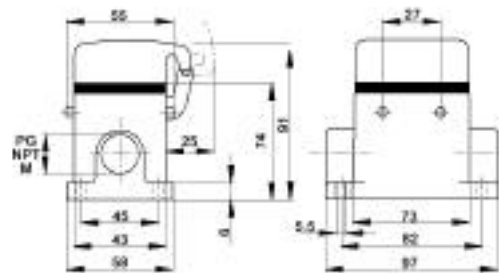
Description	Standard Grey Coating	Black Coating (NEMA 4X)
Panel Mount with Dust Cover	10.0330	70.0335

## HBE 10 SURFACE MOUNT BASES WITH DOUBLE BOLTS

### STANDARD PROFILE



### HIGH PROFILE



All dimensions are in mm.

### STANDARD PROFILE

# of Entries	Size of Entry			Standard Grey Coating			Black Coating (NEMA 4X)			Strain Relief
	PG	NPT	Metric	PG Part #	NPT Part #	Metric Part #	PG Part #	NPT Part #	Metric Part #	
2 Entries	16	1/2"	20	10.0380	10.0380NP	19.0380	70.0480	70.0480NP	79.0480	PG NPT M
			25	-	-	79.0466	-	-	79.0486	
1 Entry	16	1/2"	20	10.0360	10.0360NP	19.0360	70.0470	70.0470NP	79.0470	PG NPT M
			25	-	-	19.0361	-	-	79.0476	

### HIGH PROFILE

# of Entries	Size of Entry			Standard Grey Coating			Black Coating (NEMA 4X)			Strain Relief
	PG	NPT	Metric	PG Part #	NPT Part #	Metric Part #	PG Part #	NPT Part #	Metric Part #	
2 Entries	21	3/4"	25	70.0462	70.0462NP	79.0462	70.0482	70.0482NP	79.0482	PG NPT M
	29	1"	32	70.0464	70.0464NP	79.0464	70.0484	70.0484NP	79.0484	
1 Entry	21	3/4"	25	70.0452	70.0452NP	79.0452	70.0472	70.0472NP	79.0472	PG NPT M
	29	1"	32	70.0454	70.0454NP	79.0454	70.0474	70.0474NP	79.0474	

[www.contactelectronics.com](http://www.contactelectronics.com)  
800-221-1451