

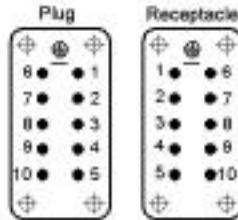
Rectangular Connectors HBE Series

HBE 10 SCREW & CRIMP TERMINATED INSERTS

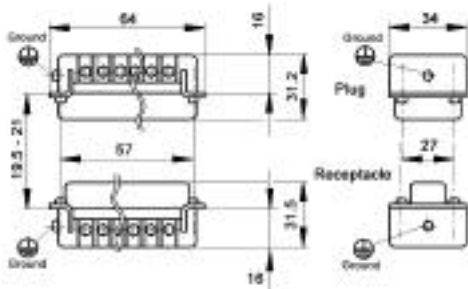
SCREW TERMINATED



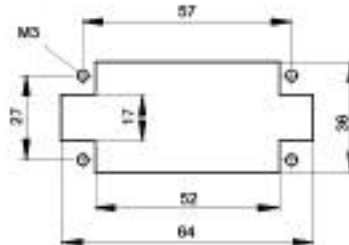
View from Cable Side



CRIMP TERMINATED

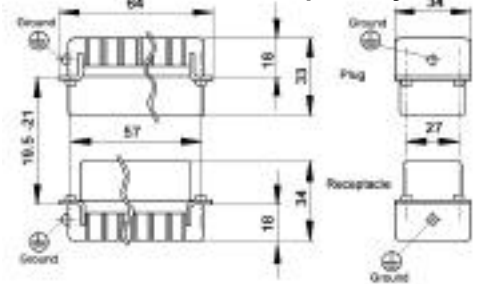


Panel Cut-Out



All dimensions are in mm.

Contacts Sold Separately

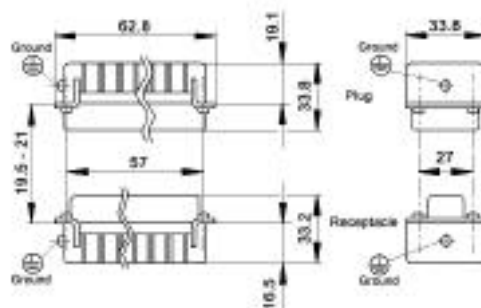


These inserts fit in the HBE 10 Series Housings which are on the following pages.

	Plug	Receptacle
Screw Terminated with wire protection	10.1920	10.1930
Screw Terminated without wire protection	10.1921	10.1931
Crimp Terminated: Machined	10.1820	10.1830

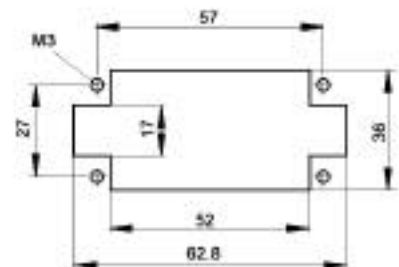
Crimp Contacts are on the next page.

HBE 10 SCREWLESS SPRING CAGE CLAMP INSERTS



All dimensions are in mm.

Panel Cut-Out



Same View from Cable Side as Screw & Crimp Termination

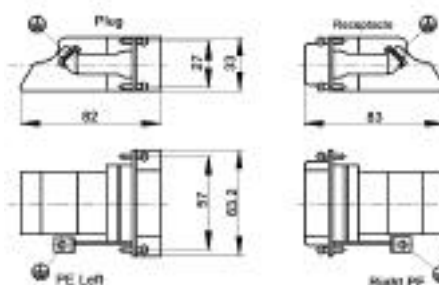
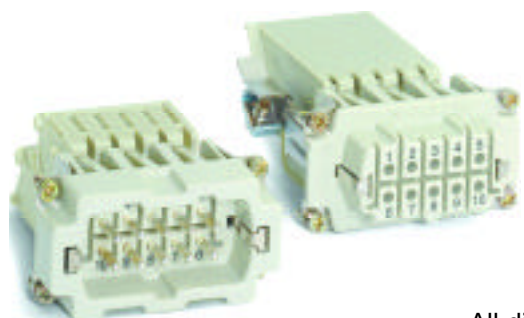
	Plug	Receptacle
Screwless Cage Clamp	10.4001	10.4011

These inserts fit in the HBE 10 Series Housings which are on the following pages.

www.contactelectronics.com
800-221-1451

Rectangular Connectors HBE Series

HBE 10 TERMINAL BLOCK ADAPTER INSERTS



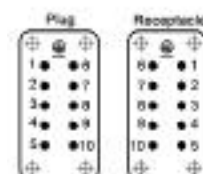
All dimensions are in mm.

View from Cable Side

These terminal block inserts only fit in HBE 10 panel mount bases.

	Plug	Receptacle
Terminal Block: Right Ground	70.3020	70.3031
Terminal Block: Left Ground	70.3030	70.3021

One terminal block insert mates with one screw terminated insert.



CONTACTS FOR HBE CRIMP TERMINATED INSERTS

HBE MACHINED CONTACTS: DIAMETER 2.5MM



Bags of 100						
mm2	AWG	Silver		Gold		Stripping Length (mm)
		Pin	Socket	Pin	Socket	
0.5	20	11.1900	11.1950	11.1920	11.1970	Pin=7.4, Socket =7.3
0.75 - 1.0	18	11.1901	11.1951	11.1921	11.1971	Pin=7.4, Socket =7.3
1.5	16	11.1902	11.1952	11.1922	11.1972	Pin=7.4, Socket =7.3
2.5	14	11.1903	11.1953	-	-	Pin=7.4, Socket =7.3
4.0	12	11.1904	11.1954	-	-	Pin=7.4, Socket =7.3

TOOLS

WIRE GAUGE: 0.5 - 4.0 MM2



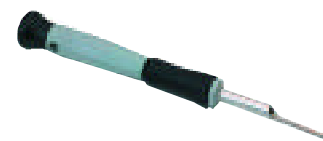
Locator
11.1472



Crimp Dies
11.1471



Crimp Tool
11.1470



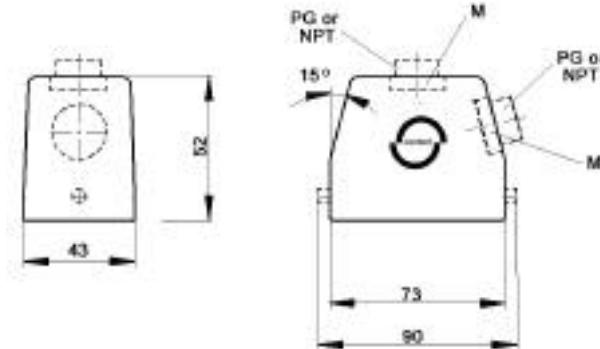
Removal Tool:
11.1825

www.contactelectronics.com
800-221-1451

Rectangular Connectors HBE Series

HBE 10 HOODS WITH SINGLE LEVER BOLTS

TOP ENTRY



SIDE ENTRY



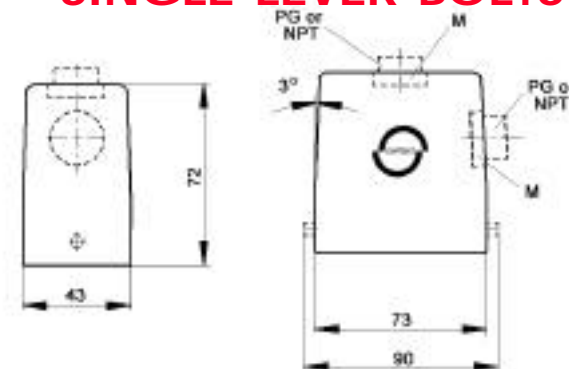
All dimensions are in mm.

Position of Cable Entry	Size of Entry			Standard Grey Coating			Black Coating (NEMA 4X)			Strain Relief		
	PG	NPT	Metric	PG Part #	NPT Part #	Metric Part #	PG Part #	NPT Part #	Metric Part #	PG	NPT	M
Top Entry	16	1/2"	20	10.0409	10.0409NP	19.0409	70.0490	70.0490NP	79.0490	●	■	▲
	21	3/4"	25	10.0407	10.0407NP	19.0407	70.0496	70.0496NP	79.0496	●	■	▲
Side Entry	16	1/2"	20	10.0429	10.0429NP	19.0429	70.0590	70.0590NP	79.0590	●	■	▲
	21	3/4"	25	10.0428	10.0428NP	19.0428	70.0596	70.0596NP	79.0596	●	■	▲

Metric hoods do not come with a neck.

HBE 10 HIGH PROFILE HOODS WITH SINGLE LEVER BOLTS

TOP ENTRY



SIDE ENTRY



All dimensions are in mm.

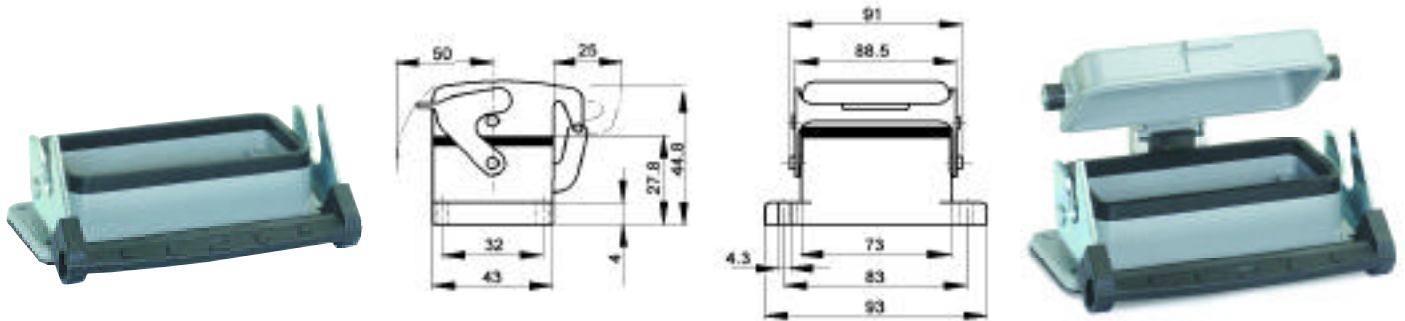
Position of Cable Entry	Size of Entry			Standard Grey Coating			Black Coating (NEMA 4X)			Strain Relief		
	PG	NPT	Metric	PG Part #	NPT Part #	Metric Part #	PG Part #	NPT Part #	Metric Part #	PG	NPT	M
Top Entry	21	3/4"	25	70.0442	70.0442NP	79.0442	70.0492	70.0492NP	79.0492	●	■	▲
	29	1"	32	70.0444	70.0444NP	79.0444	70.0494	70.0494NP	79.0494	●	■	▲
Side Entry	21	3/4"	25	70.0542	70.0542NP	79.0542	70.0592	70.0592NP	79.0592	●	■	▲
	29	1"	32	70.0544	70.0544NP	79.0544	70.0594	70.0594NP	79.0594	●	■	▲

Metric hoods do not come with a neck.

www.contactelectronics.com
800-221-1451

Rectangular Connectors HBE Series

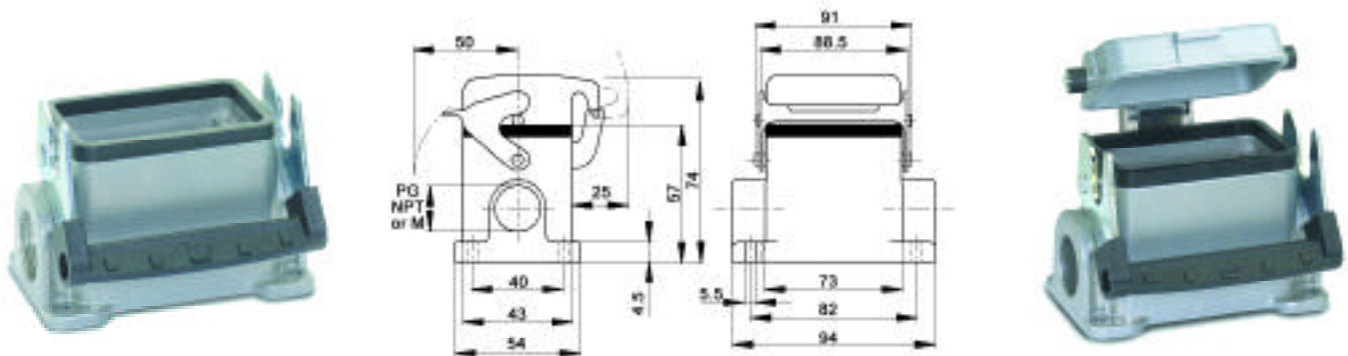
HBE 10 PANEL MOUNT BASES WITH SINGLE LEVER



All dimensions are in mm.

Description	Standard Grey Coating	Black Coating (NEMA 4X)
Panel Mount without Dust Cover	10.0329	70.0327
Panel Mount with Dust Cover	10.0339	70.0337

HBE 10 SURFACE MOUNT BASES WITH SINGLE LEVER



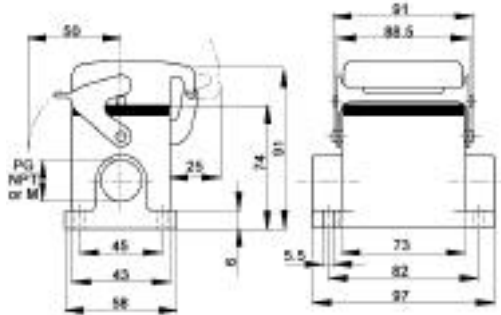
All dimensions are in mm.

# of Entries	Size of Entry			Standard Grey Coating			Black Coating (NEMA 4X)			Strain Relief		
	PG	NPT	Metric	PG Part #	NPT Part #	Metric Part #	PG Part #	NPT Part #	Metric Part #	PG	NPT	M
2 Entries	16	1/2"	20	10.0359	10.0359NP	19.0359	70.0630	70.0630NP	79.0630	●	■	▲
			25	-	-	79.0616	-	-	79.0636			▲
1 Entry	16	1/2"	20	10.0349	10.0349NP	19.0349	70.0620	70.0620NP	79.0620	●	■	▲
	21	3/4"	25	10.0347	10.0347NP	19.0347	-	-	79.0626			▲
2 Entries with dust cover	16	1/2"	20	10.0389	10.0389NP	19.0389	70.0670	70.0670NP	79.0670	●	■	▲
			25	-	-	79.0656	-	-	79.0676			▲
1 Entry with dust cover	16	1/2"	20	10.0369	10.0369NP	19.0369	70.0660	70.0660NP	79.0660	●	■	▲
			25	-	-	79.0646	-	-	79.0666			▲

www.contactelectronics.com
800-221-1451

Rectangular Connectors HBE Series

HBE 10 HIGH PROFILE SURFACE MOUNT BASES WITH SINGLE LEVER

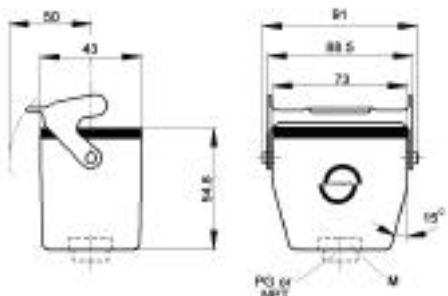


All dimensions are in mm.

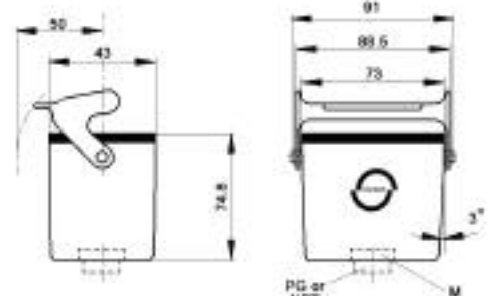
# of Entries	Size of Entry			Standard Grey Coating			Black Coating (NEMA 4X)			Strain Relief		
	PG	NPT	Metric	PG Part #	NPT Part #	Metric Part #	PG Part #	NPT Part #	Metric Part #	PG	NPT	M
2 Entries	21	3/4"	25	70.0612	70.0612NP	79.0612	70.0632	70.0632NP	79.0632	●	■	▲
	29	1"	32	70.0614	70.0614NP	79.0614	70.0634	70.0634NP	79.0634	●	■	▲
1 Entry	21	3/4"	25	70.0602	70.0602NP	79.0602	70.0622	70.0622NP	79.0622	●	■	▲
	29	1"	32	70.0604	70.0604NP	79.0604	70.0624	70.0624NP	79.0624	●	■	▲
2 Entries with dust cover	21	3/4"	25	70.0652	70.0652NP	79.0652	70.0672	70.0672NP	79.0672	●	■	▲
	29	1"	32	70.0654	70.0654NP	79.0654	70.0674	70.0674NP	79.0674	●	■	▲
1 Entry with dust cover	21	3/4"	25	70.0642	70.0642NP	79.0642	70.0662	70.0662NP	79.0662	●	■	▲
	29	1"	32	70.0644	70.0644NP	79.0644	70.0664	70.0664NP	79.0664	●	■	▲

HBE 10 CABLE COUPLER HOOD WITH SINGLE LEVER

STANDARD PROFILE



HIGH PROFILE



All dimensions are in mm.

Profile	Size of Entry			Standard Grey Coating			Black Coating (NEMA 4X)			Strain Relief		
	PG	NPT	Metric	PG Part #	NPT Part #	Metric Part #	PG Part #	NPT Part #	Metric Part #	PG	NPT	M
Standard Profile	16	1/2"	20	10.0469	10.0469NP	19.0469	70.0430	70.0430NP	79.0430	●	■	▲
	21	3/4"	25	70.0422	70.0422NP	79.0422	70.0432	70.0432NP	79.0432	●	■	▲
High Profile	21	3/4"	25	70.0424	70.0424NP	79.0424	70.0434	70.0434NP	79.0434	●	■	▲
	29	1"	32	70.0426	70.0426NP	79.0426	70.0436	70.0436NP	79.0436	●	■	▲

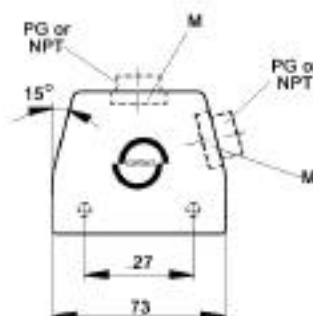
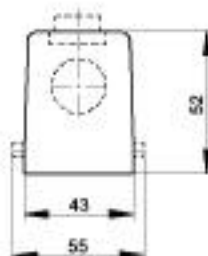
Metric hoods do not come with a neck.

www.contactelectronics.com
800-221-1451

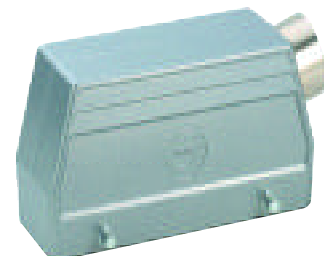
Rectangular Connectors HBE Series

HBE 10 HOODS WITH DOUBLE LEVER BOLTS

TOP ENTRY



SIDE ENTRY



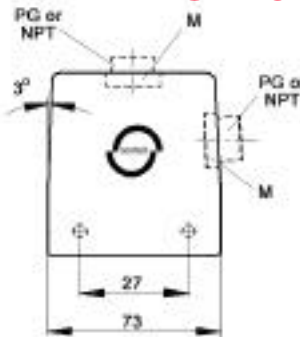
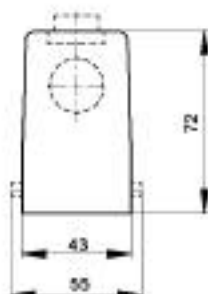
All dimensions are in mm.

Position of Cable Entry	Size of Entry			Standard Grey Coating			Black Coating (NEMA 4X)			Strain Relief		
	PG	NPT	Metric	PG Part #	NPT Part #	Metric Part #	PG Part #	NPT Part #	Metric Part #	PG	NPT	M
Top Entry	16	1/2"	20	10.0400	10.0400NP	19.0400	70.0510	70.0510NP	79.0510	●	■	▲
	21	3/4"	25	10.0401	10.0401NP	19.0401	70.0512	70.0512NP	79.0512	●	■	▲
Side Entry	16	1/2"	20	10.0420	10.0420NP	19.0420	70.0530	70.0530NP	79.0530	●	■	▲
	21	3/4"	25	10.0421	10.0421NP	19.0421	70.0532	70.0532NP	79.0532	●	■	▲

Metric hoods do not come with a neck.

HBE 10 HIGH PROFILE HOODS WITH DOUBLE LEVER BOLTS

TOP ENTRY



SIDE ENTRY



All dimensions are in mm.

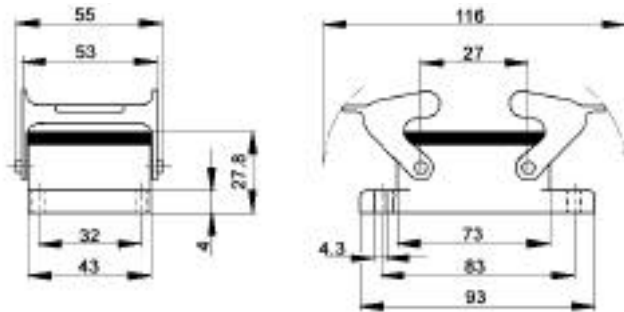
Position of Cable Entry	Size of Entry			Standard Grey Coating			Black Coating (NEMA 4X)			Strain Relief		
	PG	NPT	Metric	PG Part #	NPT Part #	Metric Part #	PG Part #	NPT Part #	Metric Part #	PG	NPT	M
Top Entry	21	3/4"	25	70.0504	70.0504NP	79.0504	70.0514	70.0514NP	79.0514	●	■	▲
	29	1"	32	70.0506	70.0506NP	79.0506	70.0516	70.0516NP	79.0516	●	■	▲
Side Entry	21	3/4"	25	70.0524	70.0524NP	79.0524	70.0534	70.0534NP	79.0534	●	■	▲
	29	1"	32	70.0526	70.0526NP	79.0526	70.0536	70.0536NP	79.0536	●	■	▲

Metric hoods do not come with a neck.

www.contactelectronics.com
800-221-1451

Rectangular Connectors HBE Series

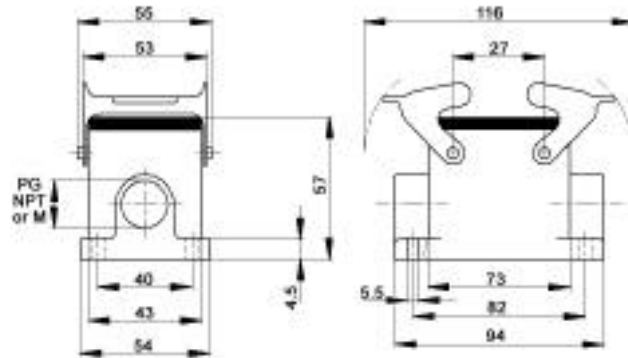
HBE 10 PANEL MOUNT BASES WITH DOUBLE LEVERS



All dimensions are in mm.

Description	Standard Grey Coating	Black Coating (NEMA 4X)
Panel Mount without Dust Cover	10.0320	70.0325

HBE 10 SURFACE MOUNT BASES WITH DOUBLE LEVERS



All dimensions are in mm.

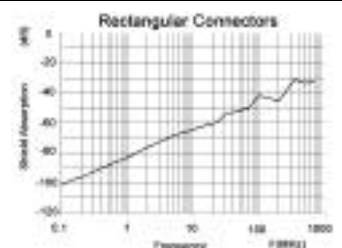
# of Entries	Size of Entry			Standard Grey Coating			Black Coating (NEMA 4X)			Strain Relief		
	PG	NPT	Metric	PG Part #	NPT Part #	Metric Part #	PG Part #	NPT Part #	Metric Part #	PG	NPT	M
2 Entries	16	1/2"	20	10.0350	10.0350NP	19.0350	70.0380	70.0380NP	79.0380	●	■	▲
			25	-	-	19.0351	-	-	79.0386			▲
1 Entry	16	1/2"	20	10.0340	10.0340NP	19.0340	70.0370	70.0370NP	79.0370	●	■	▲
			25	-	-	19.0341	-	-	79.0376			▲

EMC PROTECTION



	PG/NPT	Metric
Panel Mount Base	70.3501	79.3501
Surface Mount & Cable Coupler Hood	70.3521	79.3521

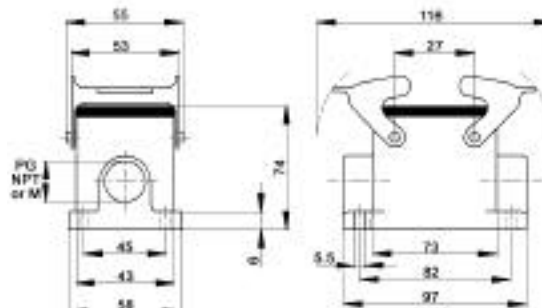
EMC Shielding is retrofittable.



www.contactelectronics.com
800-221-1451

Rectangular Connectors HBE Series

HBE 10 HIGH PROFILE SURFACE MOUNT BASES WITH DOUBLE LEVERS



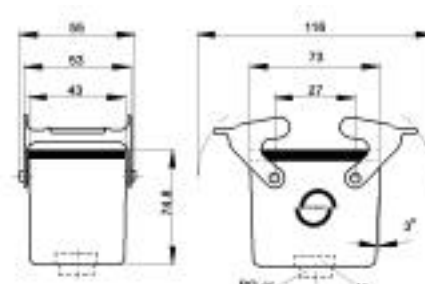
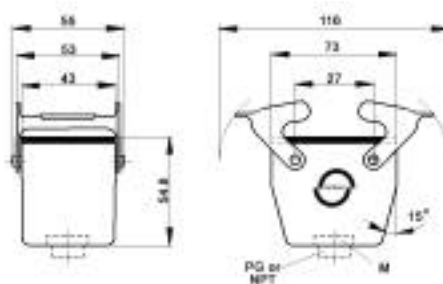
All dimensions are in mm.

# of Entries	Size of Entry			Standard Grey Coating			Black Coating (NEMA 4X)			Strain Relief		
	PG	NPT	Metric	PG Part #	NPT Part #	Metric Part #	PG Part #	NPT Part #	Metric Part #	PG	NPT	M
2 Entries	21	3/4"	25	70.0362	70.0362NP	79.0362	70.0382	70.0382NP	79.0382	●	■	▲
	29	1"	32	70.0364	70.0364NP	79.0364	70.0384	70.0384NP	79.0384	●	■	▲
1 Entry	21	3/4"	25	70.0352	70.0352NP	79.0352	70.0372	70.0372NP	79.0372	●	■	▲
	29	1"	32	70.0354	70.0354NP	79.0354	70.0374	70.0374NP	79.0374	●	■	▲

HBE 10 CABLE COUPLER HOOD WITH DOUBLE LEVER

STANDARD PROFILE

HIGH PROFILE



All dimensions are in mm.

Profile	Size of Entry			Standard Grey Coating			Black Coating (NEMA 4X)			Strain Relief		
	PG	NPT	Metric	PG Part #	NPT Part #	Metric Part #	PG Part #	NPT Part #	Metric Part #	PG	NPT	M
Standard Profile	16	1/2"	20	10.0460	10.0460NP	19.0460	70.0410	70.0410NP	79.0410	●	■	▲
	21	3/4"	25	70.0402	70.0402NP	79.0402	70.0412	70.0412NP	79.0412	●	■	▲
High Profile	21	3/4"	25	70.0404	70.0404NP	79.0404	70.0414	70.0414NP	79.0414	●	■	▲
	29	1"	32	70.0406	70.0406NP	79.0406	70.0416	70.0416NP	79.0416	●	■	▲

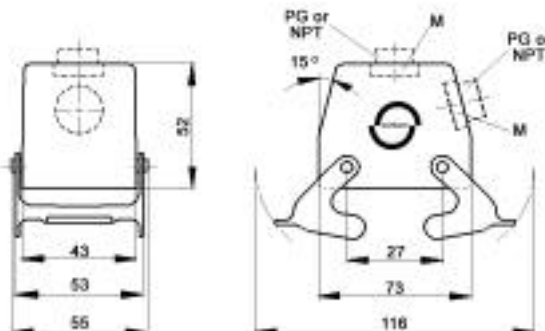
Metric hoods do not come with a neck.

www.contactelectronics.com
800-221-1451

Rectangular Connectors HBE Series

HBE 10 HOODS WITH DOUBLE LEVERS

TOP ENTRY



SIDE ENTRY



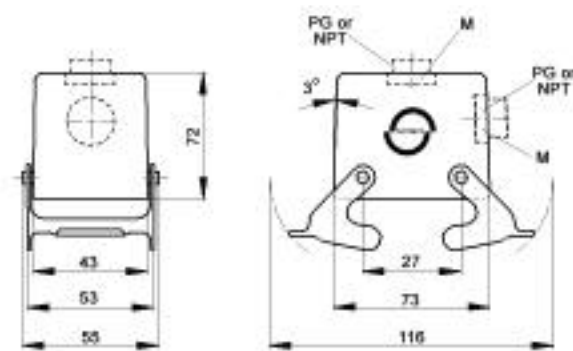
All dimensions are in mm.

Position of Cable Entry	Size of Entry			Standard Grey Coating			Black Coating (NEMA 4X)			Strain Relief		
	PG	NPT	Metric	PG Part #	NPT Part #	Metric Part #	PG Part #	NPT Part #	Metric Part #	PG	NPT	M
Top Entry	16	1/2"	20	10.0410	10.0410NP	19.0410	70.0560	70.0560NP	79.0560	●	■	▲
			25	-	-	79.0557	-	-	79.0566			▲
Side Entry	16	1/2"	20	10.0450	10.0450NP	19.0450	70.0580	70.0580NP	79.0580	●	■	▲
			25	-	-	79.0577	-	-	79.0586			▲

Metric hoods do not come with a neck.

HBE 10 HIGH PROFILE HOODS WITH DOUBLE LEVERS

TOP ENTRY



SIDE ENTRY



All dimensions are in mm.

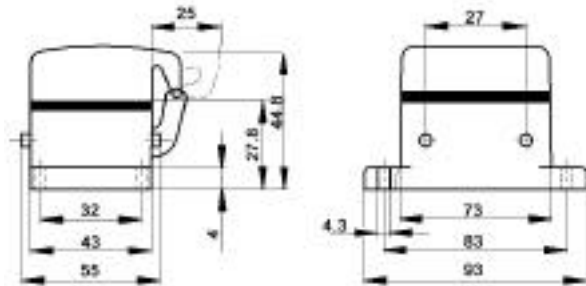
Position of Cable Entry	Size of Entry			Standard Grey Coating			Black Coating (NEMA 4X)			Strain Relief		
	PG	NPT	Metric	PG Part #	NPT Part #	Metric Part #	PG Part #	NPT Part #	Metric Part #	PG	NPT	M
Top Entry	21	3/4"	25	70.0552	70.0552NP	79.0552	70.0562	70.0562NP	79.0562	●	■	▲
	29	1"	32	70.0554	70.0554NP	79.0554	70.0564	70.0564NP	79.0564	●	■	▲
Side Entry	21	3/4"	25	70.0572	70.0572NP	79.0572	70.0582	70.0582NP	79.0582	●	■	▲
	29	1"	32	70.0574	70.0574NP	79.0574	70.0584	70.0584NP	79.0584	●	■	▲

Metric hoods do not come with a neck.

www.contactelectronics.com
800-221-1451

Rectangular Connectors HBE Series

HBE 10 PANEL MOUNT BASES WITH DOUBLE LEVER BOLTS

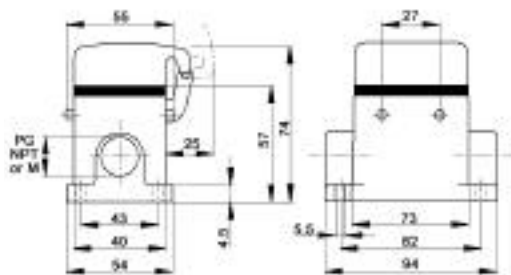


All dimensions are in mm.

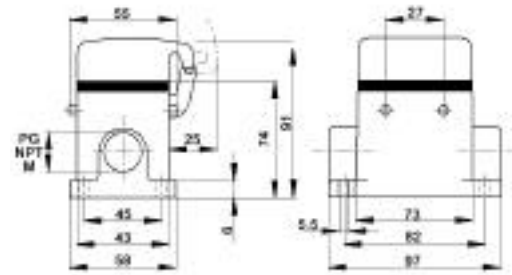
Description	Standard Grey Coating	Black Coating (NEMA 4X)
Panel Mount with Dust Cover	10.0330	70.0335

HBE 10 SURFACE MOUNT BASES WITH DOUBLE BOLTS

STANDARD PROFILE



HIGH PROFILE



All dimensions are in mm.

STANDARD PROFILE

# of Entries	Size of Entry			Standard Grey Coating			Black Coating (NEMA 4X)			Strain Relief		
	PG	NPT	Metric	PG Part #	NPT Part #	Metric Part #	PG Part #	NPT Part #	Metric Part #	PG	NPT	M
2 Entries	16	1/2"	20	10.0380	10.0380NP	19.0380	70.0480	70.0480NP	79.0480	●	■	▲
			25	-	-	79.0466	-	-	79.0486			▲
1 Entry	16	1/2"	20	10.0360	10.0360NP	19.0360	70.0470	70.0470NP	79.0470	●	■	▲
			25	-	-	19.0361	-	-	79.0476			▲

HIGH PROFILE

# of Entries	Size of Entry			Standard Grey Coating			Black Coating (NEMA 4X)			Strain Relief		
	PG	NPT	Metric	PG Part #	NPT Part #	Metric Part #	PG Part #	NPT Part #	Metric Part #	PG	NPT	M
2 Entries	21	3/4"	25	70.0462	70.0462NP	79.0462	70.0482	70.0482NP	79.0482	●	■	▲
	29	1"	32	70.0464	70.0464NP	79.0464	70.0484	70.0484NP	79.0484	●	■	▲
1 Entry	21	3/4"	25	70.0452	70.0452NP	79.0452	70.0472	70.0472NP	79.0472	●	■	▲
	29	1"	32	70.0454	70.0454NP	79.0454	70.0474	70.0474NP	79.0474	●	■	▲

www.contactelectronics.com
800-221-1451