



ELECTRICAL  
MECHANICAL  
INSULATION

GANUSA



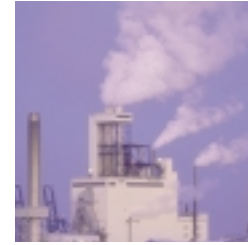
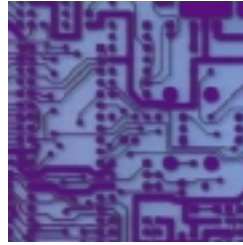
FLAME  
RETARDANT



2:1  
STANDARD  
SHRINK RATIO

Thin Wall  
Crosslinked Polyolefin

CPX 201

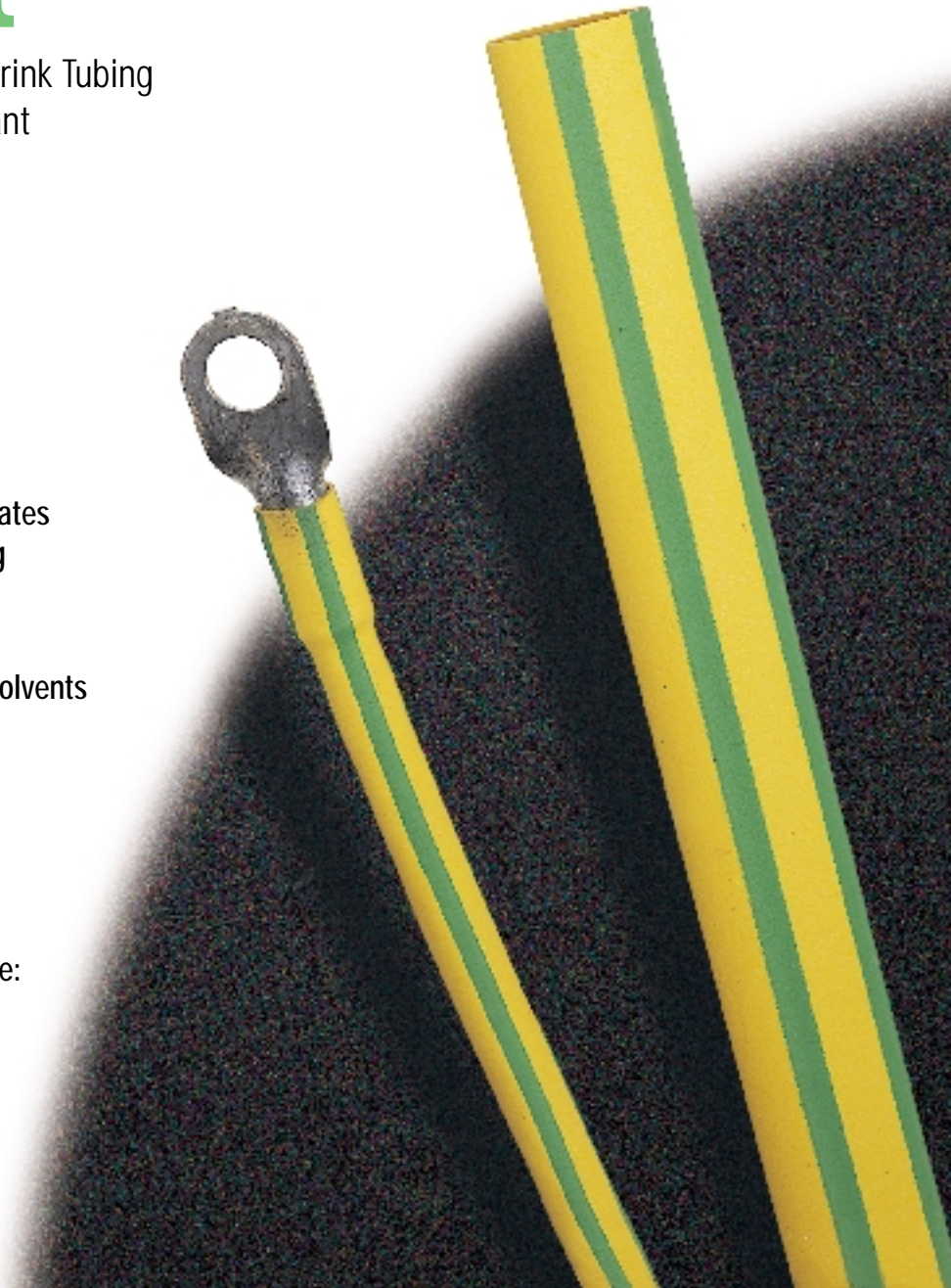


# CPX 201

Yellow and green striped Heat Shrink Tubing  
that is flexible and flame retardant

## Features

- Striped color combination designates International electrical grounding
- Flame retardant
- Resistant to common fluids and solvents
- Flexible
- Meets UL 224, 125°C;  
MIL-DTL-23053/5 Class 1  
DEF STAN 59-97, Issue 3, Type 2a
- Continuous operating temperature:  
-55°C to 135°C
- Shrink temperature: 120°C



### Technical Data

#### Physical

Property	Test Method	Typical Performance
Tensile Strength	ASTM D2671, ISO 37	2200 psi (15.0 MPa)
Elongation	ASTM D2671, ISO 37	400%
Longitudinal Change	ASTM D2671	+/- 5%
2% Secant Modulus	ASTM D2671	16000 psi (110 MPa)
Specific Gravity	ASTM D792, ISO R1183	1.3
Restricted Shrinkage	ASTM D2671	No Cracking
Elongation after Heat Aging (168hrs at 175°C)	ASTM D2671	350%
Heat Shock (4hrs at 250°C)	ASTM D2671	No cracking or flowing
Low Temperature Flexibility (4hrs at -55°C)	ASTM D2671	No cracking or splitting
Flammability	ASTM D2671	Flame Retardant

#### Electrical

Dielectric Strength	ASTM D2671, IEC 243	600 V/Mil (24kV/mm)
Volume Resistivity	ASTM D2671	10 <sup>16</sup> ohm-cm

#### Chemical

Fluid Resistance	MIL-DTL-23053/5, ISO 1817, ISO 37	Good to Excellent
Copper Corrosion	ASTM D2671	No Corrosion
Water Absorption	ASTM D570	0.2%
Fungus Resistance	ASTM G21	No Growth

## CANUSA

### There's no end to what we cover

CANUSA-EMI is a global company providing electrical and mechanical insulation solutions for a variety of industries and applications. Starting from products created by extensive developmental research at Shaw Industries (incorporated 1955), CANUSA-EMI is a recognized world leader in the provisioning of high quality heat shrink products.

#### EUROPE

CANUSA SYSTEMS LIMITED  
Bergstrand House  
Broadley Industrial Park  
Roborough, Plymouth, U.K. PL6 7EZ  
Tel: 44 (0) 1752-209880  
Fax: 44 (0) 1752-209850

#### U.S.A.

CANUSA - EMI  
P.O. Box 498830  
Cincinnati, Ohio 45249  
Tel: 1-800-422-6872  
Tel: (513) 683-7800  
Fax: (513) 683-7809

#### CANADA/INTERNATIONAL

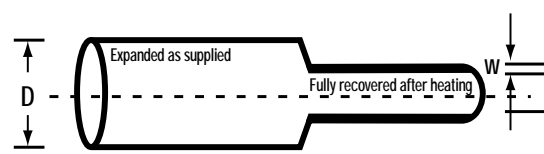
CANUSA - EMI  
25 Bethridge Road  
Toronto, Ontario M9W 1M7  
Tel: 1-800-845-6808  
Tel: (416) 743-7111  
Fax: (416) 743-7199

WORLDWIDE WEB: [www.canusa-emi.com](http://www.canusa-emi.com)

All information contained in this leaflet is believed to be reliable. We advise however that customers should separately evaluate the suitability of our products for their particular application. CANUSA-EMI and Shaw Industries give no guarantees in respect of the accuracy or sufficiency of the information presented and disclaim any liability regarding its use. Our responsibilities are only those listed in our Standard Terms and Conditions of Sale for these products. In no instance will we be liable for any eventual, indirect, or consequential damage or damages arising from the sale, resale, transfer, use or misuse of the product.

### Dimensions

ORDER REF. NO. METRIC	ORDER REF. NO. IMPERIAL	EXPANDED		RECOVERED				STANDARD LENGTHS				
		INTERNAL DIAMETER (MIN)	INTERNAL DIAMETER (MAX)	INTERNAL DIAMETER (MIN)	INTERNAL DIAMETER (MAX)	WALL THICKNESS (NOM)	WALL THICKNESS (NOM)	AA m	BB ft			
XXXX	YYYY	mm	D	IN	mm	d	IN	mm	w	IN	AA m	BB ft
0032	0125	3.2	1/8	1.60	1/16	0.51	0.020	150	1000			
0048	0187	4.8	3/16	2.40	3/32	0.51	0.020	60	1000			
0064	0250	6.4	1/4	3.20	1/8	0.64	0.025	60	500			
0095	0375	9.5	3/8	4.75	3/16	0.64	0.025	60	200			
0127	0500	12.7	1/2	6.35	1/4	0.64	0.025	60	200			
0190	0750	19.0	3/4	9.50	3/8	0.76	0.030	60	100			
0254	1000	25.4	1	12.70	1/2	0.89	0.035	30	100			
0381	1500	38.1	1 1/2	19.10	3/4	1.02	0.400	30	100			
0508	2000	50.8	2	25.40	1	1.14	0.045	30	100			



### Ordering

Select a dimension which will shrink snugly over the component to be covered. If recovery is restricted the resultant wall thickness will be less than specified.

#### To Order in Metric Units:

CPX 201 - <sup>Order Ref. No.</sup>XXXX - <sup>Color</sup>CC - <sup>Options</sup>OO - <sup>Standard Length</sup>AA - M

#### To Order in Imperial Units:

CPX 201 - <sup>Order Ref. No.</sup>YYYY - <sup>Color</sup>CC - <sup>Options</sup>OO - <sup>Standard Length</sup>BB - I

#### Standard Colors (CC)

Order Code	Color
YG	YELLOW & GREEN STRIPES only

#### Options (OO)

Unprinted	00
Printed	01

\* For additional colors please see price list.

Lengths: Supplied on continuous reels or 48" (1.2 m) lengths.

Standards: Standards: UL 224, 125°C; MIL-DTL-23053/5 Class 1; DEF STAN 59-97, Issue 3, Type 2a

Note: Non-standard sizes and lengths available subject to factory quotation.

REV 1