

# Telpower® DC Power Distribution Fuses

# TPL

## 170 Volts, DC, 70-800 Amps



**Catalog Symbol:** TPL

DC Power Distribution Fuses

Current-Limiting

**Ampere Rating:** 70 to 800 Amperes

**Voltage Rating:** 170 Volts DC

**Interrupting Rating:** 100,000A

Silver-plated terminals

**Agency Approvals:**

UL Recognized, Guide JFHR2, File E56412

Bellcore

**Catalog Numbers**

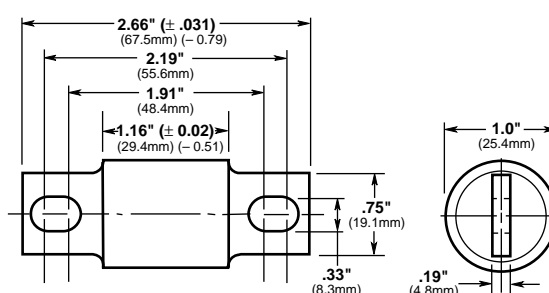
TPL-BA	TPL-BD	TPL-BG	TPL-BL	TPL-CR	TPL-CZ
TPL-BB	TPL-BE	TPL-BH	TPL-CN	TPL-CU	TPL-CZH
TPL-BC	TPL-BF	TPL-BK	TPL-CO	TPL-CV	—

**Carton Quantity and Weight**

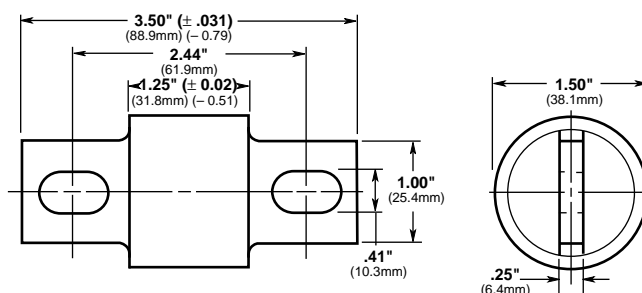
Catalog Number	Ampere Rating	Carton Qty.	Weight*	
			Lbs.	Kg.
TPL-BA	70	5	1.6	0.73
TPL-BB	80	5	1.6	0.73
TPL-BC	90	5	1.6	0.73
TPL-BD	100	5	1.6	0.73
TPL-BE	125	5	1.6	0.73
TPL-BF	150	5	1.6	0.73
TPL-BG	175	5	1.6	0.73
TPL-BH	200	5	1.6	0.73
TPL-BK	225	5	1.6	0.73
TPL-BL	250	5	1.6	0.73
TPL-CN	300	1	0.9	0.4
TPL-CO	350	1	0.9	0.4
TPL-CR	400	1	0.9	0.4
TPL-CU	450	1	0.9	0.4
TPL-CV	500	1	0.9	0.4
TPL-CZ	600	1	0.9	0.4
TPL-CZH	800	1	0.9	0.4

\*Weight per carton.

**Dimensional Data**



**TPL-BA, TPL-BB, TPL-BC, TPL-BD, TPL-BE, TPL-BF, TPL-BG, TPL-BH, TPL-BK, AND TPL-BL**



**TPL-CN, TPL-CO, TPL-CR, TPL-CU, TPL-CV, TPL-CZ, and TPL-CZH**

**General Information:**

- Designed for DC power distribution systems.
- Recognized branch circuit protection.
- Current-limiting capability.
- Complete system coordination capability.
- Energy savings with low watts loss, low operating temperatures, and minimum I<sup>2</sup>t levels.
- Use with Telpower **15100** and **15200** disconnect systems.
- For replacement of Bussmann's UBO fuses, a **TPL-TA** adapter kit is necessary.
- Spare fuseholders:  
TPSFH-LB (for TPL-B fuses)  
TPSFH-LC (for TPL-C fuses)

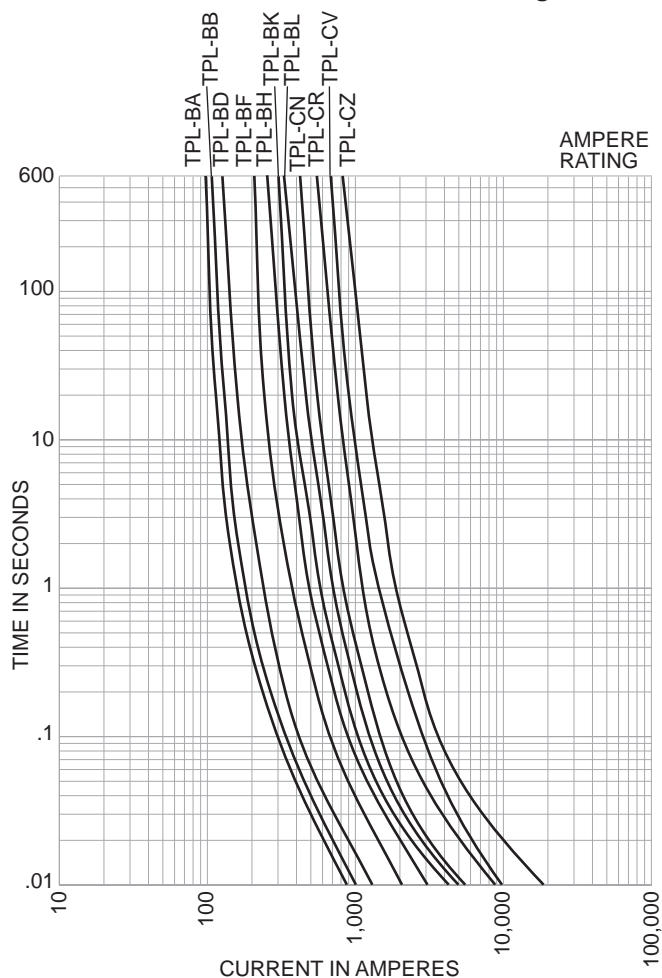
CE CE logo denotes compliance with European Union Low Voltage Directive (50-1000 VAC, 75-1500 VDC). Refer to BIF document #8002 or contact Bussmann Application Engineering at 636-527-1270 for more information.

# Telpower® DC Power Distribution Fuses

## 170 Volts DC, 70-800 Amps

TPL

### Time-Current Characteristic Curves—Average Melt



The only controlled copy of this BIF document is the electronic read-only version located on the Bussmann Network Drive. All other copies of this document are by definition uncontrolled. This bulletin is intended to clearly present comprehensive product data and provide technical information that will help the end user with design applications. Bussmann reserves the right, without notice, to change design or construction of any products and to discontinue or limit distribution of any products. Bussmann also reserves the right to change or update, without notice, any technical information contained in this bulletin. Once a product has been selected, it should be tested by the user in all possible applications.