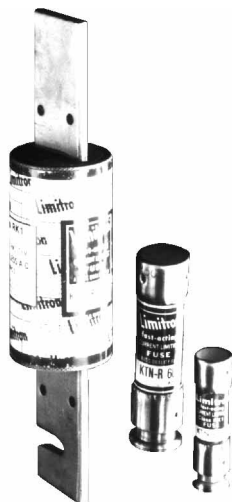


Limitron® Fast-Acting Fuses 600 Volt

KTS-R
1-600A



Catalog Symbol: KTS-R
Fast-Acting
Current-Limiting
Ampere Rating: 1 to 600 Amperes
Voltage Rating: 600 Volts AC (or less)*
Interrupting Rating: 200,000A RMS Sym.
Tube Material: Glass Melamine
End Caps: 70/30 Brass
Operating Temp.: -40°C to +85°C
Storage Temp.: -55°C to +85°C

Agency Approvals:

UL Listed, Std. 248-12, Class RK1, Guide JDDZ, File E54273
CSA Certified, C22.2 No. 248.12, Class 1422-02, File 53787

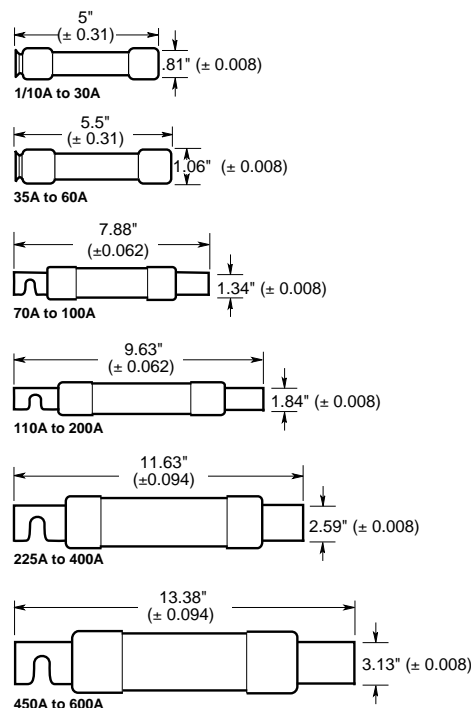
*0-600A is rated 300 VDC and 10 KAIC.

Catalog Numbers

KTS-R-1	KTS-R-30	KTS-R-125
KTS-R-2	KTS-R-35	KTS-R-150
KTS-R-3	KTS-R-40	KTS-R-175
KTS-R-4	KTS-R-45	KTS-R-200
KTS-R-5	KTS-R-50	KTS-R-225
KTS-R-6	KTS-R-60	KTS-R-250
KTS-R-8	KTS-R-70	KTS-R-300
KTS-R-10	KTS-R-75	KTS-R-350
KTS-R-12	KTS-R-80	KTS-R-400
KTS-R-15	KTS-R-90	KTS-R-450
KTS-R-20	KTS-R-100	KTS-R-500
KTS-R-25	KTS-R-110	KTS-R-600

CE logo denotes compliance with European Union Low Voltage Directive (50-1000 VAC, 75-1500 VDC). Refer to BIF document #8002 or contact Bussmann Application Engineering at 314-527-1270 for more information.

Dimensional Data



Carton Quantity and Weight (600 VAC)*

Amps	Carton Qty.	Weight**	
		Lbs.	Kg.
1-30	10	1.45	0.657
40-60	10	2.63	1.262
70-100	1	0.5	0.226
110-200	1	1.4	0.634
225-400	1	2.75	1.246
450-600	1	4.25	1.925

*Contact Bussmann for DC ratings.
**Weight per carton.

General Information:

- Single-element, fast-acting fuses with minimal time-delay.
- Provides a high degree of short-circuit current-limitation (component protection).
- Particularly suited for circuits and loads with no heavy surge currents of motors, transformers, solenoids, and welders.
- LIMITRON fuses are commonly used to protect circuit breakers with lower interrupting ratings.
- If used in circuits with surge currents (motors, etc.) must be sized to prevent unwanted opening and thus only provide short-circuit protection.
- Incorporate Class R rejection feature. Can be inserted in non-rejection type fuseholders. Thus, can physically and electrically replace fast-acting Class H, K1, K5, RK5, and other fast-acting fuses.

Limitron®

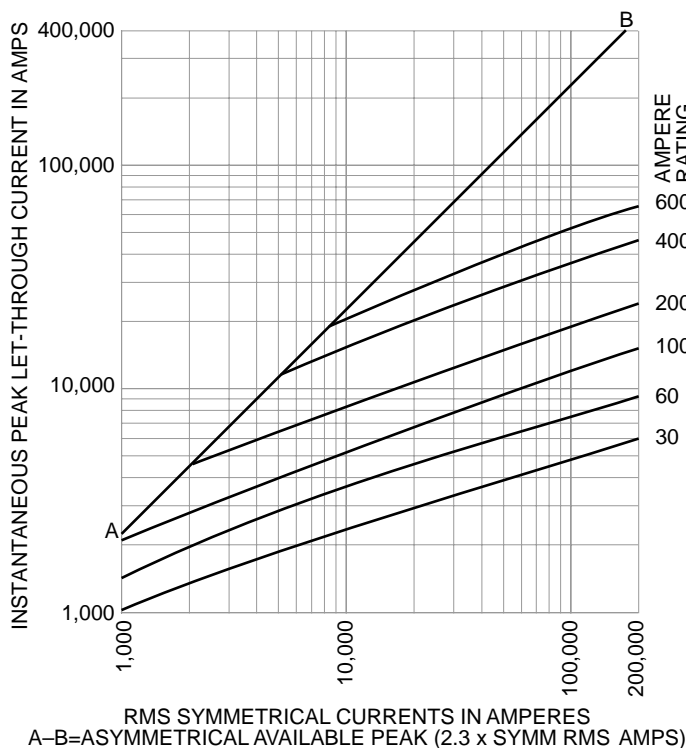
Fast-Acting Fuses

600 Volt

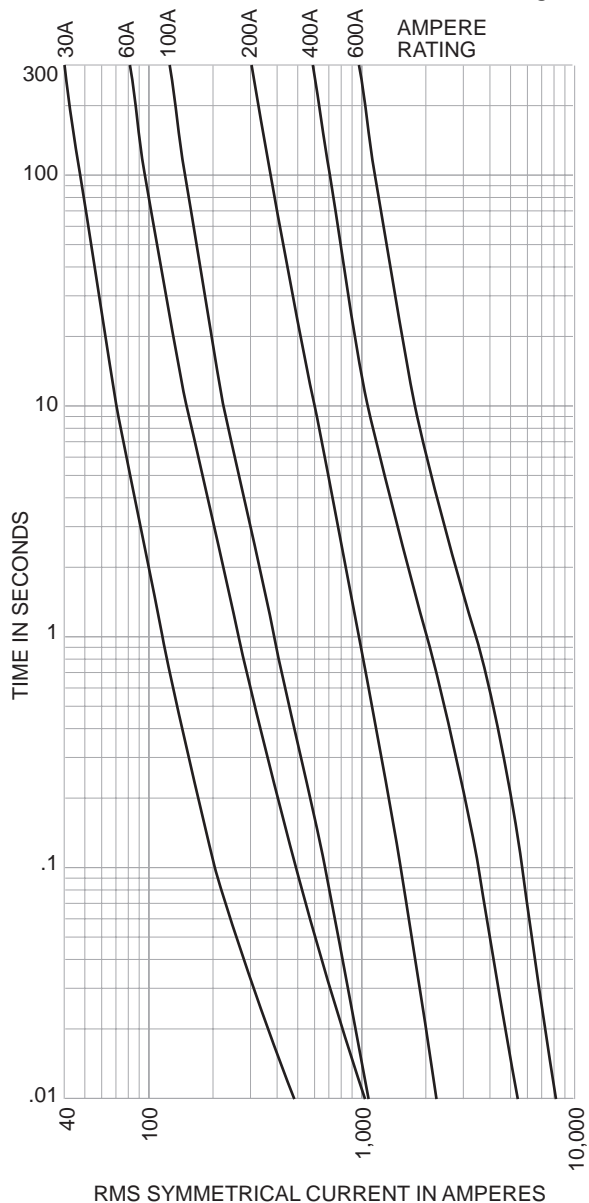
KTS-R

1-600A

Current-Limitation Curves



Time-Current Characteristic Curves—Average Melt



Class R (600V) Catalog Data
(Clip Retaining Spring Standard, Suffix "R")

Amps	Poles	Basic Catalog Number	Terminal Type (Suffix No.)				
			Screw w/	Pres. Plate	Box Lug w/	Clip CU only	1/4" Quick Connect
1/10	1	R60030-1	SR	PR	CR	COR	-
	2	R60030-2	SR	PR	CR	COR	-
30	3	R60030-3	SR	PR	CR	COR	-
31	1	R60060-1	SR*	PR	CR	COR	-
	2	R60060-2	SR*	PR	CR	COR	-
60	3	R60060-3	SR*	PR	CR	COR	-
61	1	R60100-1	-	-	CR	COR	-
	2	R60100-2	-	-	CR	COR	-
100	3	R60100-3	-	-	CR	COR	-
101	1	R60200-1	-	-	CR	COR	-
	3	R60200-3	-	-	CR	-	-
201	1	R60400-1	-	-	CR*	COR*	-
	3	R60400-3	-	-	CR	-	-
401	1	R60600-1	-	-	CR	-	-
	3	R60600-3	-	-	CR	-	-

*UL Recognized, No CSA Certification.

The only controlled copy of this BIF document is the electronic read-only version located on the Bussmann Network Drive. All other copies of this document are by definition uncontrolled. This bulletin is intended to clearly present comprehensive product data and provide technical information that will help the end user with design applications. Bussmann reserves the right, without notice, to change design or construction of any products and to discontinue or limit distribution of any products. Bussmann also reserves the right to change or update, without notice, any technical information contained in this bulletin. Once a product has been selected, it should be tested by the user in all possible applications.