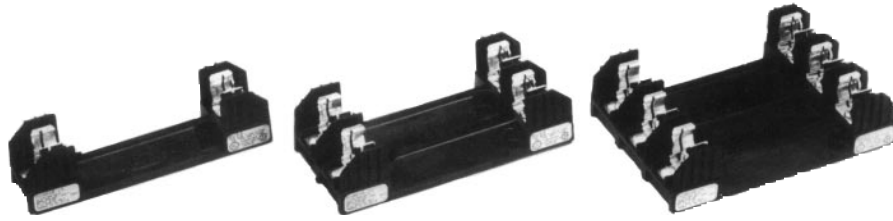


Class H Fuseblocks

250 Volts

H250 Series



Catalog Symbol: H250 Series
 Ampere Rating: 1/10 to 600 Amperes
 Voltage Rating: 250 Volts AC
 Agency Approvals:
 U.L. Listed, U.L. 512, Guide IZLT, File 14853
 CSA Certified, C22.2 No. 39, Class 6225-01, File 47235
 Withstand Rating: 10,000 Amps RMS Sym.
 For use with Class H Fuses (NON and REN)
 Materials: Thermoplastic
 U.L. Flammability: 94 VO
 Temperature Rating (RTI): 130°C

Class H Fuseblocks (250V) Catalog Data (for NON and REN Fuses)

Amps	Poles	Basic Catalog Number	Terminal Type (Suffix No.)								Dimensions (Inches) – See Next Page For Figures											Max. Wire Size		
			Screw				Box Lug w/				0.25" Quick Connect	Fig. No.	A	B	C	D	E	F	G	H	J Dia. x C' Bore		K	
			Clip with Reinforced Spring	Pressure Plate	Pressure Plate & Clip with Reinforced Spring	Clip with Reinforced Spring	Clip w/ Reinforced Spring (Copper Only)	Copper Only																
1/10 to 30	1, 2, 3	H25030-1, H25030-2, H25030-3	S, S, S	SR, SR, SR	P, P, P	PR, PR, PR	C, C, C	CR, CR, CR	COR, COR, COR	CO, CO, CO	Q, Q, Q	1, 2, 3	(See Figures)											S.P. #10 Cu C #6 Cu
31 to 60	1, 2, 3	H25060-1, H25060-2, H25060-3	S*, S*, S*	SR*, SR*, SR*	P*, P*, P*	PR*, PR*, PR*	C, C, C	CR, CR, CR	COR, COR, COR	CO, CO, CO	—, —, —	4, 5, 6	4.25	1.73	1.5, 2.81, 4.125	1.5	0.5	0.5	1.25	—, 1.94, 1.31	0.22 x 0.41	0.27	S. #10 #2 Cu-Al	
61 to 100	1, 2, 3	H25100-1, H25100-2, H25100-3	—, —, —	SR*, —, SR*	—, —, —	—, —, —	—, —, —	CR, —, CR	—, —, —	—, —, —	—, —, —	7, 8, 9	(See Figures)											#1/0 Cu-Al
101 to 200	1, 3	H25200-1, H25200-3	—, —	—, —	—, —	—, —	—, —	CR, —	—, —	—, —	—, —	10, 11	7.125	3.09	3.0	2.06	0.5	2.0	3.0	0.75	—	0.31	250MCM Cu-Al	
201 to 400	1, 3	H25400-1, H25400-3	—, —	—, —	—, —	—, —	—, —	CR*, CR	—, —	—, —	—, —	10, 12	9.06	4.0	3.0, 4.0	3.02, 2.50	0.63, 0.82	1.75, 9.25	3.0, 10.88	1.0, 1.0	—	0.31	500MCM Cu-Al	
401 to 600	1, 3	H25600-1, H25600-3	—, —	—, —	—, —	—, —	—, —	CR, CR	—, —	—, —	—, —	10, 12	11.0	4.97	3.0, 5.0	4.0, 3.0	1.125, 1.87	1.75, 11.0	4.0, 14.74	1.00, 1.00	—	0.31	2-500MCM Cu-Al	

*U.L. Recognized, No CSA Certification.

CE CE logo denotes compliance with European Union Low Voltage Directive (50-1000 Vac, 75-1500 Vdc). Refer to BIF document #8002 or contact Bussmann Application Engineering at 314-527-1270 for more information.

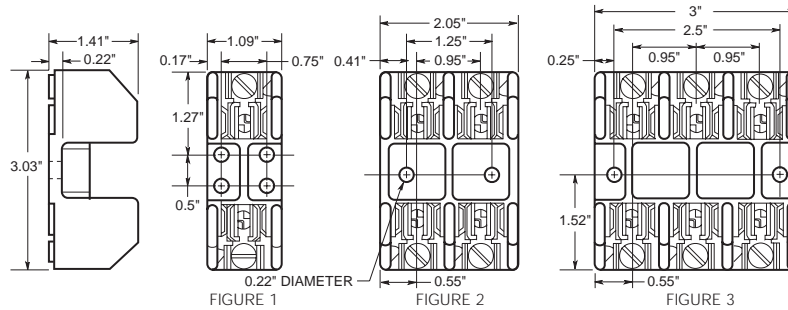
Class H Fuseblocks

250 Volts

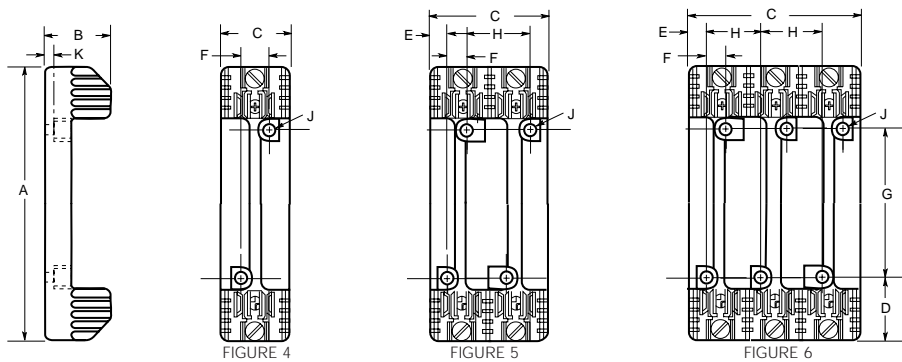
H250 Series

Dimensional Data

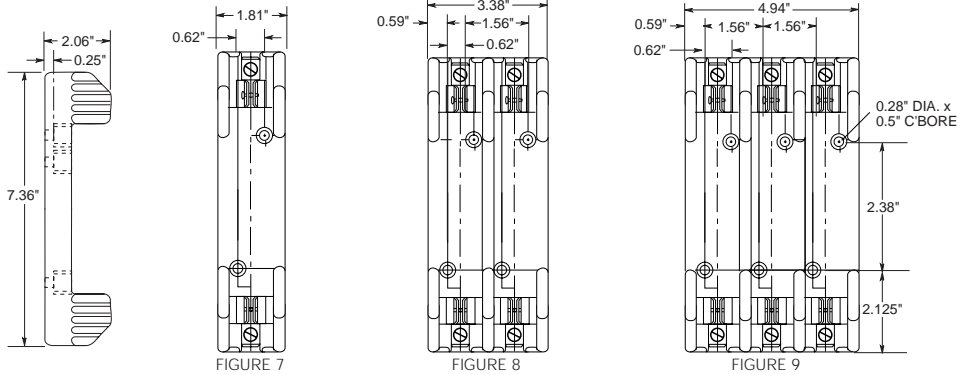
250V, 1/10A to 30A



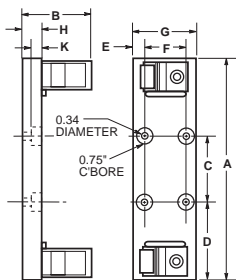
250V, 31A to 60A



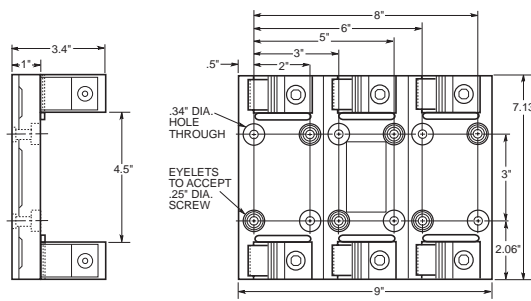
250V, 61A to 100A



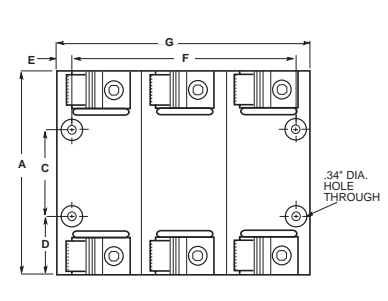
250V, 101A to 600A



250V, 101A to 200A



250V, 201A to 600A



The only controlled copy of this BIF document is the electronic read-only version located on the Bussmann Network Drive. All other copies of this document are by definition uncontrolled. This bulletin is intended to clearly present comprehensive product data and provide technical information that will help the end user with design applications. Bussmann reserves the right, without notice, to change design or construction of any products and to discontinue or limit distribution of any products. Bussmann also reserves the right to change or update, without notice, any technical information contained in this bulletin. Once a product has been selected, it should be tested by the user in all possible applications.