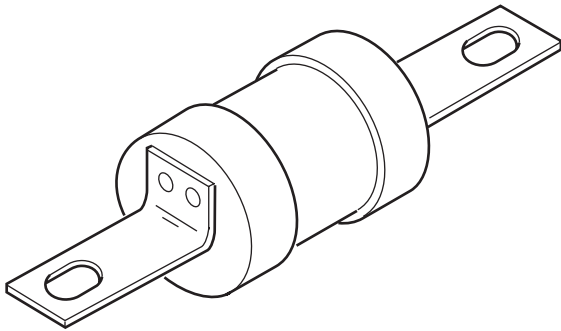


Industrial HRC Fuse Link

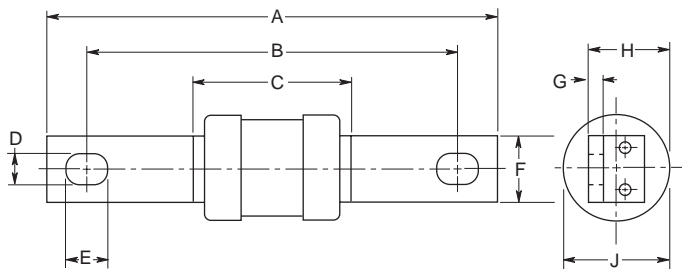
31 x 138mm, BS88, IEC 269-1
Center Bolted Tags

DD

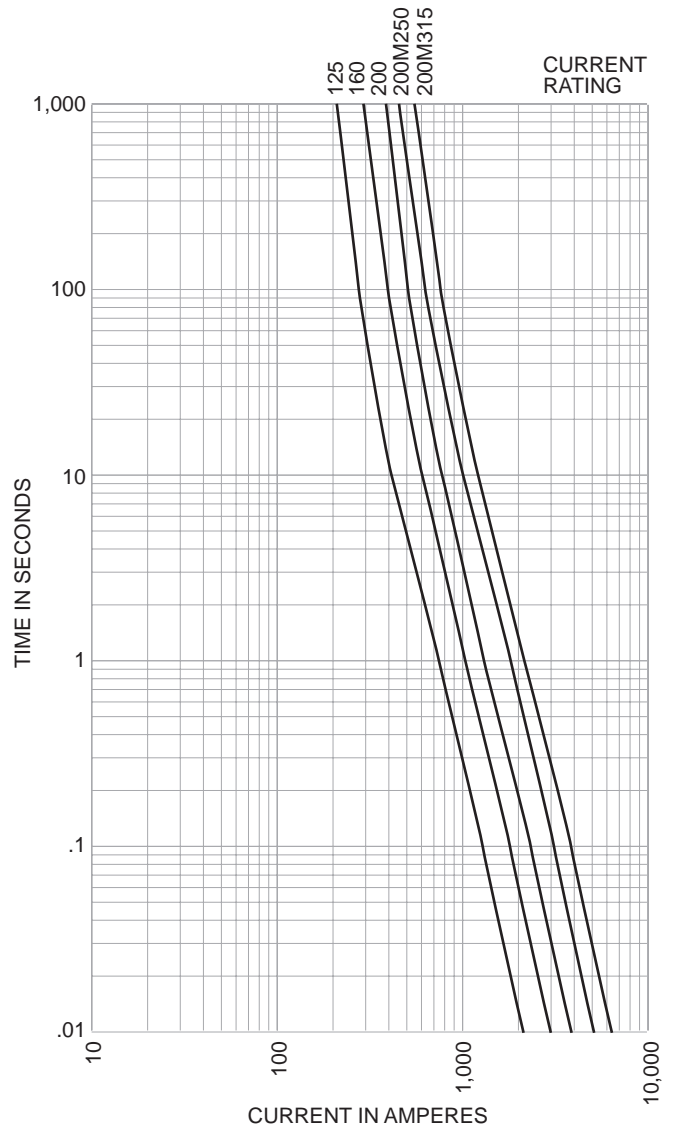


CATALOG SYMBOL: DD
INDUSTRIAL HRC FUSE
CENTER BOLTED TAGS
PACKAGE QUANTITY: 5
80KA INTERRUPTING RATING
MOUNTS IN 200DF FUSEBLOCK

Dimensional Data:



Time-Current Characteristic Curve (Full Size Curves Available)



Electrical Characteristics

| Catalog Number | Ampere Rating | I ² T (Amp ² Seconds) | | | Nom Watts Loss | Rated Voltage | Dimensions (Inches/mm) | | | | | | | | |
|----------------|---------------|---|---------------|---------------|----------------|---------------|------------------------|-------|------|-----|------|------|--------------|------|--------------|
| | | Pre-Arcing | Total At 240V | Total At 415V | | | A | B | C | D | E | F | G | H | J |
| DD125 | 125 | 29,500 | 50,000 | 71,000 | 11 | 415AC | 136.0 | 111.0 | 47.0 | 9.0 | 12.5 | 19.0 | 0.13 3.23 | 22.5 | 1.22 31.0 |
| DD160 | 160 | 57,000 | 97,000 | 135,000 | 13 | | | | | | | | | | |
| DD200 | 200 | 120,000 | 205,000 | 290,000 | 14 | | | | | | | | | | |
| DD200M250 | 200M250 | 200,000 | — | 480,000 | 18 | | | | | | | | | | |
| DD200M315 | 200M315 | 265,000 | — | 635,000 | 27 | | | | | | | | | | |

The only controlled copy of this BIF document is the electronic read-only version located on the Bussmann Network Drive. All other copies of this BIF document are by definition uncontrolled. This bulletin is intended to clearly present comprehensive product data and provide technical information that will help the end user with design applications. Bussmann reserves the right, without notice, to change design or construction of any products and to discontinue or limit distribution of any products. Bussmann also reserves the right to change or update, without notice, any technical information contained in this bulletin. Once a product has been selected, it should be tested by the user in all possible applications.