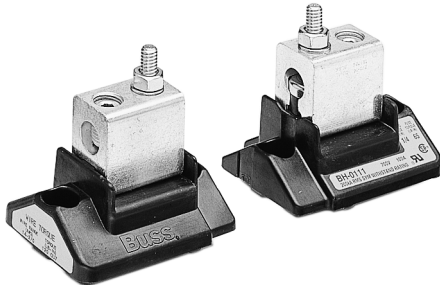


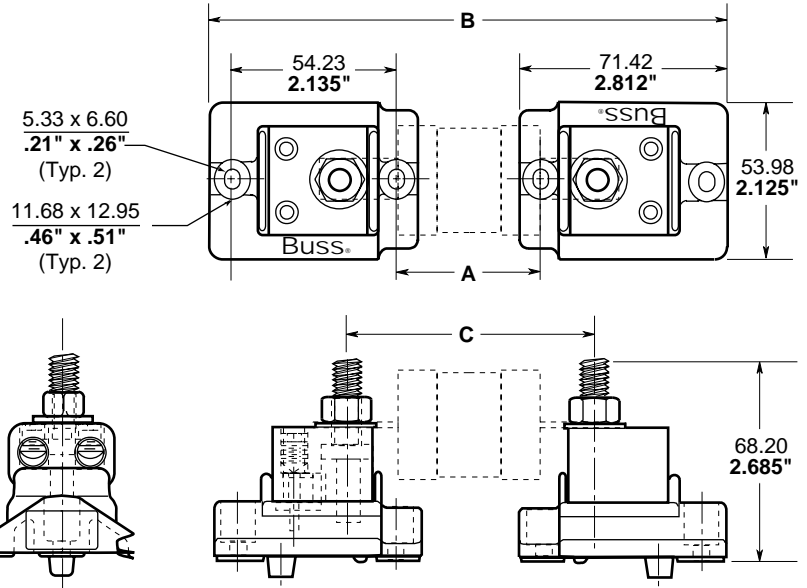
# Modular Fuseblocks

## 0-700 Volts, 100 Amps

# BH-0 Series



Dimensional Data - All tolerances  $\frac{(\pm 0.25) \text{ mm}}{(\pm 0.01) \text{ inches}}$



Catalog Symbol: BH-0 Series  
 Base: Light-weight, high temperature thermoplastic  
 Mounting Studs: Plated steel  
 Nut: Plated steel  
 Washer: Spring steel  
 Connector: Tin-plated aluminum. One hole connector accepts #14 - 2/0 copper wire. Two hole connector accepts #14 - 1/0 copper wire.  
 Agency Approval:  
 UL Recognized, Guide IZLT2, File E14853 up to 700 Volts  
 CSA Certified, Class 6225-01, File 47235 up to 700 Volts  
 Withstand Rating: 200,000A RMS Sym. or interrupting rating of fuse used, whichever is smaller.  
 Temperature Rating (RTI): 140°C

Catalog Code Description:

**Block Series**

BH - 0 X X X S

**Agency Approval**

- 0 No Agency Approval
- 1 UL Recognition and CSA Certification
- 2 UL Recognition Only
- 3 CSA Certification Only

**Wire Connector**

- 0 No Connector
- 1 1 Hole for #14 - 2/0 Copper Wire (for use with Base 0)
- 2 2 Hole for #14 - 1/0 Copper Wire (for use with Base 0)

**Optional Control Wire Screw**

- 1 1/4 - 20
- 25/16 - 18
- 33/8 - 16

**Stud Size**

- NOTES:**
- Always check applicable end use standards for required spacing between blocks, fuses or other hardware.
  - For applications above 700V, consult appropriate electrical standard for proper creepage distances, clearance distances and insulator voltage withstand ratings.

CE logo denotes compliance with European Union Low Voltage Directive (50-1000 VAC, 75-1500 VDC). Refer to BIF document #8002 or contact Bussmann Application Engineering at 314-527-1270 for more information.

# Modular Fuseblocks

## 0-700 Volts, 100 Amps

# BH-0 Series

### Electrical Characteristics

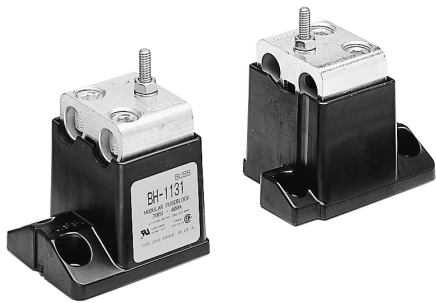
Buss Cat. No.	Fuseblock Part No.	Stud Ref.	Fuse Volt Rating	Dimensions mm / Inches		
				"A"	"B"	"C"
FBP 35-60	BH-0111	¼	700V	25.41 / 1.482	162.87 / 6.412	71.42 / 2.812
FBP 70-100	BH-0121	¼	700V	38.46 / 1.514	163.68 / 6.444	72.24 / 2.844
FWA 70-100	BH-0111	¼	150V	18.21 / 0.717	143.43 / 5.647	52.00 / 2.047
FWH 35A-60A	BH-0112	5/16	500V	27.74 / 1.092	152.96 / 6.022	61.52 / 2.422
FWH 70A-100A	BH-0122	5/16	500V	38.86 / 1.530	164.08 / 6.460	72.64 / 2.860
FWP 35A-60A	BH-0112	5/16	700V	57.91 / 2.280	183.13 / 7.210	91.69 / 3.610
FWP 70A-100A	BH-0122	5/16	700V	56.72 / 2.233	105.74 / 7.163	90.50 / 3.563
FWX 35A-60A	BH-0112	5/16	250V	27.74 / 1.092	152.96 / 6.022	61.52 / 2.422
FWX 70A-100A	BH-0112	5/16	250V	24.97 / 0.983	15.19 / 5.913	58.75 / 2.313
JJS 70-100	BH-0111	¼	600V	25.96 / 1.022	151.18 / 5.952	59.74 / 2.352
JKS 65-100	BH-0111	¼	600V	53.17 / 2.290	183.39 / 7.220	91.95 / 3.620
KAB 35-60	BH-0112	5/16	250V	28.12 / 1.107	153.34 / 6.037	61.90 / 2.437
KAB 70-100	BH-0112	5/16	250V	26.54 / 1.045	151.77 / 5.975	60.33 / 2.375
KAC 35-60	BH-0112	5/16	600V	58.29 / 2.295	183.52 / 7.225	92.08 / 3.625
KAC 70-100	BH-0113	3/8	600V	64.34 / 2.530	189.48 / 7.460	98.04 / 3.860
KAX 35-60	BH-0112	5/16	250V	28.12 / 1.107	153.34 / 6.037	61.90 / 2.437
KAX 70-100	BH-0112	5/16	250V	26.54 / 1.045	151.77 / 5.975	60.33 / 2.375
KBC 35-60	BH-0112	5/16	600V	58.29 / 2.295	183.52 / 7.225	92.08 / 3.625
KBC 70-100	BH-0121	¼	600V	59.08 / 2.326	184.30 / 7.256	92.86 / 3.656
KBH 35-60	BH-0112	5/16	500V	28.12 / 1.107	153.34 / 6.037	61.90 / 2.437
KBH 65-100	BH-0121	¼	500V	39.24 / 1.545	164.47 / 6.475	73.03 / 2.875
KBP 35-100	BH-0111	¼	700V	58.29 / 2.295	183.52 / 7.225	92.08 / 3.625
LPJ 65-100	BH-0111	¼	600V	58.17 / 2.290	183.39 / 7.220	91.95 / 3.620
170M0108 thru 170M0167	BH-0112	¼	660V	44.20 / 1.74	169.42 / 6.67	77.98 / 3.070
170M0208 thru 170M0267	BH-0111	¼	660V	31.24 / 1.23	156.46 / 6.16	65.02 / 2.560

The only controlled copy of this BIF document is the electronic read-only version located on the Bussmann Network Drive. All other copies of this document are by definition uncontrolled. This bulletin is intended to clearly present comprehensive product data and provide technical information that will help the end user with design applications. Bussmann reserves the right, without notice, to change design or construction of any products and to discontinue or limit distribution of any products. Bussmann also reserves the right to change or update, without notice, any technical information contained in this bulletin. Once a product has been selected, it should be tested by the user in all possible applications.

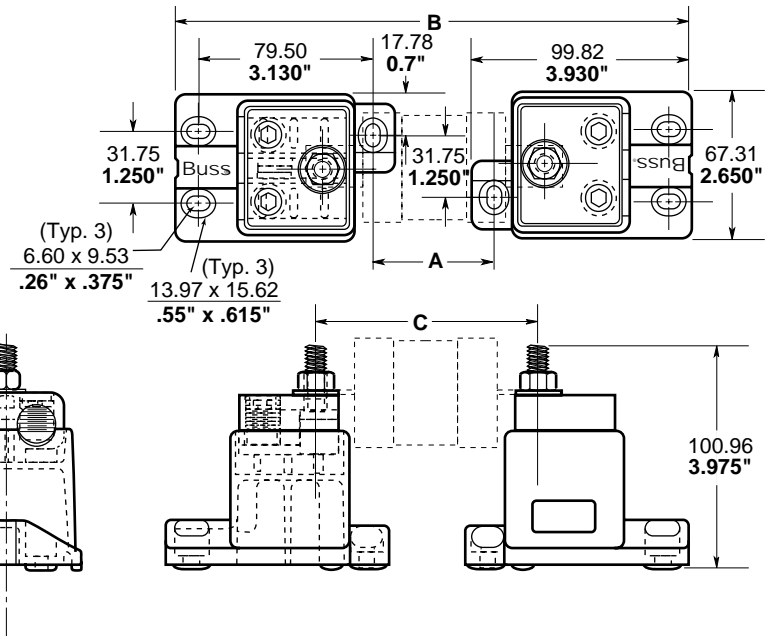
# Modular Fuseblocks

## 0-2500 Volts, 400 Amps

# BH-1 Series



Dimensional Data  $\frac{\text{mm} (\pm .25)}{\text{Inches} (\pm .01)}$



- Catalog Symbol: BH-1 Series
- Base: Light-weight, high temperature thermoplastic
- Mounting Studs: Plated steel
- Connector: Tin-plated aluminum. Standard connector accepts #6 - 250 MCM copper wire
- Nut: Plated steel
- Washer: Spring steel
- Agency Approval:
  - UL Recognized, Guide EZLT2, File E14853 up to 700 Volts
  - CSA Certified, Class 6225-01, File 47235 up to 700 Volts
- Withstand Rating: 200,000A RMS Sym. or interrupting rating of fuse used, whichever is smaller.
- Temperature Rating (RTI): 140°C

Catalog Code Description:

**Block Series**

BH - 1XXXXS

**Agency Approval**

- 0 No Agency Approval
- 1 UL Recognition and CSA Certification
- 2 UL Recognition Only
- 3 CSA Certification Only

**Wire Connector**

- 0 No Connector
- 3 2 Hole for #6 - 250 MCM Copper Wire (for use with Base 1, 2, & 3)

**Optional Control Wire Screw**

**Stud Size**

- 1 1/4 - 20
- 2 5/16 - 18
- 3 3/8 - 16

- NOTES:**
1. Always check applicable end use standards for required spacing between blocks, fuses or other hardware.
  2. For applications above 700V, consult appropriate electrical standard for proper creepage distances, clearance distances and insulator voltage withstand ratings.

CE logo denotes compliance with European Union Low Voltage Directive (50-1000 VAC, 75-1500 VDC). Refer to BIF document #8002 or contact Bussmann Application Engineering at 314-527-1270 for more information.

# Modular Fuseblocks

## 0-2500 Volts, 400 Amps

# BH-1 Series

### Electrical Characteristics

Buss Cat. No.	Fuseblock Part No.	Stud Ref.	Fuse Volt Rating	Dimensions mm / Inches		
				"A"	"B"	"C"
FBP 125-200	BH-1133	3/8	700V	37.59 / 1.480	216.92 / 8.540	82.55 / 3.250
FWA 125-400	BH-1131	1/4	150V	10.59 / 0.417	189.92 / 7.477	55.55 / 2.187
FWH 125A-200A	BH-1132	5/16	500V	29.72 / 1.170	162.89 / 8.23	74.68 / 2.940
FWH 225A-400A	BH-1133	3/8	500V	42.42 / 1.670	221.74 / 8.730	87.38 / 3.440
FWP 125A-200A	BH-1133	3/8	700V	61.47 / 2.420	238.76 / 9.40	106.43 / 4.190
FWP 250A-400A	BH-1133	3/8	700V	63.75 / 2.510	243.08 / 9.570	87.38 / 4.280
FWX 125A-200A	BH-1132	5/16	250V	17.02 / 0.670	196.34 / 7.73	61.98 / 2.440
FWX 225-300	BH-1132	5/16	250V	17.02 / 0.670	196.34 / 7.73	61.98 / 2.440
JJN 225-400	BH-1133	3/8	300V	1.88 / 0.074	181.20 / 7.134	46.84 / 1.844
JJS 110-200	BH-1132	5/16	600V	1.872 / 0.737	197.61 / 7.78	63.68 / 2.507
JJS 225-400	BH-1133	3/8	600V	24.08 / 0.948	203.40 / 8.008	69.04 / 2.718
KAB 125-200	BH-1132	5/16	250V	15.31 / 0.605	194.6 / 7.665	60.33 / 2.375
KAB 225-400	BH-1133	3/8	250V	25.68 / 1.011	205.00 / 8.071	70.64 / 2.781
KAC 110-200	BH-1133	3/8	600V	66.17 / 2.605	245.36 / 9.66	111.13 / 4.375
KAX 110-200	BH-1132	5/16	250V	15.37 / 0.605	194.69 / 7.665	60.32 / 2.375
KAX 225-400	BH-1133	3/8	250V	25.68 / 1.011	205.00 / 8.071	70.64 / 2.781
KBC 110-200	BH-1131	1/4	600V	47.90 / 1.886	227.10 / 8.941	92.86 / 3.656
KBC 225-400	BH-1133	3/8	600V	58.22 / 2.292	23.754 / 9.352	103.17 / 4.062
KBH 125-200	BH-1131	1/4	500V	28.07 / 1.105	207.34 / 8.163	73.03 / 2.875
KBH 225-400	BH-1133	3/8	500V	38.38 / 1.511	217.70 / 8.571	83.34 / 3.281
KBP 125-200	BH-1133	3/8	700V	57.43 / 2.261	236.75 / 9.321	102.39 / 4.031
KBP 225-400	BH-1133	3/8	700V	57.43 / 2.261	236.75 / 9.321	102.39 / 4.031
SPJ-4B 50-250	BH-1133	3/8	1000V	77.27 / 3.042	256.59 / 10.102	122.22 / 4.812
SPJ-4E 50-250	BH-1133	3/8	1000V	77.27 / 3.042	256.59 / 10.102	122.22 / 4.812
SPP-4B 50-400	BH-1133	3/8	700V	40.77 / 1.605	220.09 / 8.665	85.73 / 3.375
SPP-4E 50-400	BH-1133	3/8	700V	40.77 / 1.605	220.09 / 8.665	85.73 / 3.375
SPP-4F 50-400	BH-1133	3/8	700V	78.87 / 3.105	258.19 / 10.165	123.83 / 4.875
SPP-4H 50-400	BH-1133	3/8	700V	78.87 / 3.105	258.19 / 10.165	123.83 / 4.875
170E5448 thru 170E5451	BH-1133	3/8	2500V	163.07 / 6.420	342.40 / 13.480	208.03 / 8.190
170E7863 thru 170E7864	BH-1133	3/8	2500V	163.07 / 6.420	342.40 / 13.480	208.03 / 8.190
170E8272 thru 170E8273	BH-1133	3/8	2500V	163.07 / 6.420	342.40 / 13.480	208.03 / 8.190
170L3661 thru 170L3680	BH-1133	3/8	1000V	63.04 / 2.482	242.31 / 9.542	108.00 / 4.252
170L3668 thru 170L3670	BH-1133	3/8	1000V	63.04 / 2.482	242.37 / 9.542	108.00 / 4.252
170L3671 thru 170L3673	BH-1133	3/8	1000V	63.04 / 2.482	242.37 / 9.542	108.00 / 4.252
170L3675 thru 170L3677	BH-1133	3/8	1000V	63.04 / 2.482	242.37 / 9.542	108.00 / 4.252
170L3678 thru 170L3680	BH-1133	3/8	1000V	63.04 / 2.482	242.37 / 9.542	108.00 / 4.252
170L3688 thru 170L3690	BH-1132	5/16	1000V	65.02 / 2.560	244.35 / 9.620	109.98 / 4.330
170L3691 thru 170L3693	BH-1133	3/8	1000V	65.02 / 2.560	244.35 / 9.620	109.98 / 4.330
170L3694 thru 170L3696	BH-1132	5/16	1000V	65.02 / 2.560	244.35 / 9.620	109.98 / 4.330
170L3697 thru 170L3699	BH-1132	5/16	1000V	65.02 / 2.560	244.35 / 9.620	109.98 / 4.330
170L3775 and 170L3776	BH-1133	3/8	1000V	63.04 / 2.482	242.3 / 9.542	108.00 / 4.252
170L3779 and 170L3780	BH-1133	3/8	1000V	63.04 / 2.482	242.3 / 9.542	108.00 / 4.252
170L3783 and 170L3784	BH-1133	3/8	1000V	63.04 / 2.482	242.3 / 9.542	108.00 / 4.252
170L3787 and 170L3788	BH-1133	3/8	1000V	63.04 / 2.482	242.3 / 9.542	108.00 / 4.252
170L3791 and 170L3792	BH-1133	3/8	1000V	63.04 / 2.482	242.3 / 9.542	108.00 / 4.252
170L3795 and 170L3796	BH-1133	3/8	1000V	63.04 / 2.482	242.3 / 9.542	108.00 / 4.252
170L3800 and 170L3801	BH-1133	3/8	1000V	63.04 / 2.482	242.3 / 9.542	108.00 / 4.252
170L3804 and 170L3805	BH-1133	3/8	1000V	63.04 / 2.482	242.3 / 9.542	108.00 / 4.252
170L3808 and 170L3809	BH-1133	3/8	1000V	63.04 / 2.482	242.3 / 9.542	108.00 / 4.252
170L5777 and 170L5778	BH-1133	3/8	1000V	63.04 / 2.482	242.3 / 9.542	108.00 / 4.252
170L5779 thru 170L5783	BH-1133	3/8	1000V	63.04 / 2.482	242.3 / 9.542	108.00 / 4.252
170L5787 and 170L5788	BH-1133	3/8	1000V	63.04 / 2.482	242.3 / 9.542	108.00 / 4.252
170L5789 thru 170L5793	BH-1133	3/8	1000V	63.04 / 2.482	242.3 / 9.542	108.00 / 4.252

# Modular Fuseblocks

## 0-2500 Volts, 400 Amps

# BH-1 Series

### Electrical Characteristics (continued)

Buss Cat. No.	Fuseblock Part No.	Stud Ref.	Fuse Volt Rating	Dimensions mm / Inches		
				"A"	"B"	"C"
170M1308 thru 170M1317	BH-1131	¼	660V	33.04 / 1.300	212.34 / 8.360	78.00 / 3.070
170M1318 thru 170M1322	BH-1131	¼	660V	33.04 / 1.300	212.34 / 8.360	78.00 / 3.070
170M1358 thru 170M1367	BH-1131	¼	660V	33.04 / 1.300	212.34 / 8.360	78.00 / 3.070
170M1368 thru 170M1372	BH-1131	¼	660V	33.04 / 1.300	212.34 / 8.360	78.00 / 3.070
170M1408 thru 170M1417	BH-1131	¼	660V	33.04 / 1.300	212.34 / 8.360	78.00 / 3.070
170M1418 thru 170M1422	BH-1131	¼	660V	33.04 / 1.300	212.34 / 8.360	78.00 / 3.070
170M1458 thru 170M1467	BH-1132	5/16	660V	25.04 / 0.986	204.37 / 8.046	70.00 / 2.756
170M1468 thru 170M1472	BH-1132	5/16	660V	25.04 / 0.986	204.37 / 8.046	70.00 / 2.756
170M1508 thru 170M1517	BH-1132	5/16	660V	25.04 / 0.986	204.37 / 8.046	70.00 / 2.756
170M1518 thru 170M1522	BH-1132	5/16	660V	25.04 / 0.986	204.37 / 8.046	70.00 / 2.756
170M2608 thru 170M2614	BH-1133	3/8	660V	33.04 / 1.300	212.34 / 8.360	78.00 / 3.070
170M2615 thru 170M2621	BH-1131	¼	660V	33.04 / 1.300	212.34 / 8.360	78.00 / 3.070
170M2658 thru 170M2664	BH-1133	3/8	660V	33.04 / 1.300	212.34 / 8.360	78.00 / 3.070
170M2665 thru 170M2671	BH-1133	3/8	660V	33.04 / 1.300	212.34 / 8.360	78.00 / 3.070
170M3008 thru 170M3012	BH-1133	3/8	660V	33.04 / 1.300	212.34 / 8.360	78.00 / 3.070
170M3013 thru 170M3019	BH-1133	3/8	660V	33.04 / 1.300	212.34 / 8.360	78.00 / 3.070
170M3058 thru 170M3062	BH-1133	3/8	660V	33.04 / 1.300	212.34 / 8.360	78.00 / 3.070
170M3063 thru 170M3069	BH-1133	3/8	660V	33.04 / 1.300	212.34 / 8.360	78.00 / 3.070
170M3108 thru 170M3112	BH-1133	3/8	660V	33.04 / 1.300	212.34 / 8.360	78.00 / 3.070
170M3113 thru 170M3119	BH-1133	3/8	660V	33.04 / 1.300	212.34 / 8.360	78.00 / 3.070
170M3138 thru 170M3141	BH-1133	3/8	1250V	63.04 / 2.560	244.35 / 9.620	109.98 / 4.330
170M3142 thru 170M3148	BH-1133	3/8	1250V	63.04 / 2.560	244.35 / 9.620	109.98 / 4.330
170M3158 thru 170M3162	BH-1133	3/8	660V	63.04 / 2.482	242.37 / 9.542	108.00 / 4.252
170M3163 thru 170M3169	BH-1133	3/8	660V	63.04 / 2.482	242.37 / 9.542	108.00 / 4.252
170M3188 thru 170M3191	BH-1133	3/8	1250V	63.04 / 2.482	242.37 / 9.542	108.00 / 4.252
170M3192 thru 170M3198	BH-1133	3/8	1250V	63.04 / 2.482	242.37 / 9.542	108.00 / 4.252
170M3208 thru 170M3212	BH-1133	3/8	660V	63.04 / 2.482	242.37 / 9.542	108.00 / 4.252
170M3213 thru 170M3219	BH-1133	3/8	660V	63.04 / 2.482	242.37 / 9.542	108.00 / 4.252
170M3238 thru 170M3241	BH-1133	3/8	1250V	63.04 / 2.482	242.37 / 9.542	108.00 / 4.252
170M3242 thru 170M3248	BH-1133	3/8	1250V	63.04 / 2.482	242.37 / 9.542	108.00 / 4.252
170M3258 thru 170M3262	BH-1133	3/8	660V	63.04 / 2.482	242.37 / 9.542	108.00 / 4.252
170M3263 thru 170M3269	BH-1133	3/8	660V	63.04 / 2.482	242.37 / 9.542	108.00 / 4.252
170M3308 thru 170M3312	BH-1132	5/16	660V	31.04 / 1.222	210.36 / 8.282	76.00 / 2.992
170M3313 thru 170M3319	BH-1132	5/16	660V	31.04 / 1.222	210.36 / 8.282	76.00 / 2.992
170M3358 thru 170M3362	BH-1132	5/16	660V	31.04 / 1.222	210.36 / 8.282	76.00 / 2.992
170M3363 thru 170M3369	BH-1132	5/16	660V	31.04 / 1.222	210.36 / 8.282	76.00 / 2.992
170M3608 thru 170M3612	BH-1133	3/8	660V	40.03 / 1.576	219.35 / 8.636	84.99 / 3.346
170M3613 thru 170M3619	BH-1133	3/8	660V	40.03 / 1.576	219.35 / 8.636	84.99 / 3.346
170M3658 thru 170M3662	BH-1133	3/8	660V	40.03 / 1.576	219.35 / 8.636	84.99 / 3.346
170M3663 thru 170M3669	BH-1133	3/8	660V	40.03 / 1.576	219.35 / 8.636	84.99 / 3.346
170M3688 thru 170M3691	BH-1133	3/8	1250V	85.04 / 3.348	264.36 / 10.408	130.00 / 5.118
170M3692 thru 170M3697	BH-1133	3/8	1250V	85.04 / 3.348	264.36 / 10.408	130.00 / 5.118
170M3708 thru 170M3712	BH-1133	3/8	660V	78.03 / 3.072	257.35 / 10.132	122.99 / 4.842
170M3713 thru 170M3719	BH-1133	3/8	660V	40.03 / 1.576	219.35 / 8.636	84.99 / 3.346
170M3738 thru 170M3741	BH-1133	3/8	1250V	85.04 / 3.348	264.36 / 10.408	130.00 / 5.118
170M3742 thru 170M3747	BH-1133	3/8	1250V	85.04 / 3.348	264.36 / 10.408	130.00 / 5.118
170M3758 thru 170M3762	BH-1133	3/8	660V	78.03 / 3.072	257.35 / 10.132	122.99 / 4.842
170M3763 thru 170M3769	BH-1133	3/8	660V	40.03 / 1.576	219.35 / 8.636	84.99 / 3.346

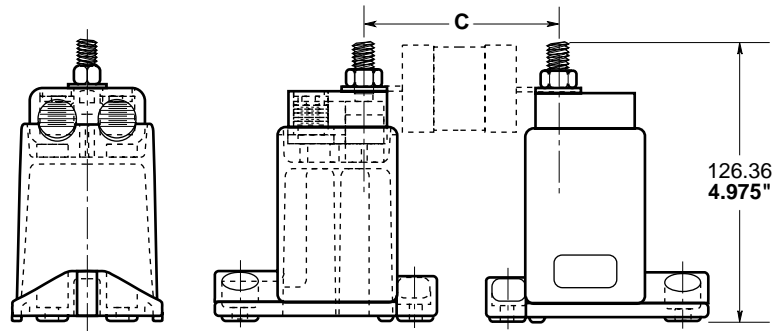
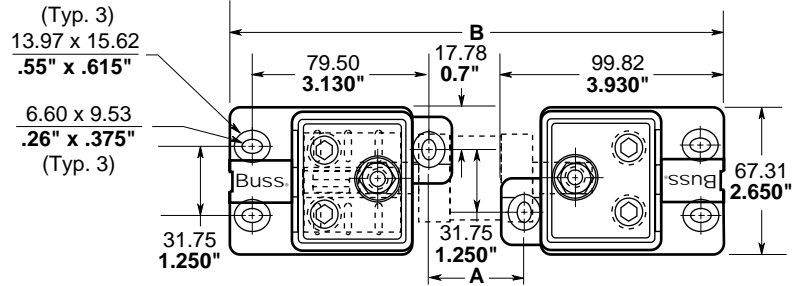
The only controlled copy of this BIF document is the electronic read-only version located on the Bussmann Network Drive. All other copies of this document are by definition uncontrolled. This bulletin is intended to clearly present comprehensive product data and provide technical information that will help the end user with design applications. Bussmann reserves the right, without notice, to change design or construction of any products and to discontinue or limit distribution of any products. Bussmann also reserves the right to change or update, without notice, any technical information contained in this bulletin. Once a product has been selected, it should be tested by the user in all possible applications.

# Modular Fuseblocks for High-Speed Semiconductor Fuses 0-5000 Volts, 600 Amps

# BH-2 Series



Dimensional Data  $\frac{\text{mm} (\pm .25)}{\text{Inches} (\pm .01)}$



- Catalog Symbol: BH-2 Series
- Base: Light weight, high temperature thermoplastic
- Mounting Studs: Plated steel
- Connector: Tin-plated aluminum.  
Standard connector accepts #6 - 250 MCM copper wire
- Nut: Plated steel
- Washer: Spring steel
- Agency Approval:  
UL Recognized, Guide IZLT2, File E14853 up to 700 Volts  
CSA Certified, Class 6225-01, File 47235 up to 700 Volts
- Withstand Rating: 200,000A RMS Sym. or interrupting rating of fuse used, whichever is smaller.
- Temperature Rating (RTI): 140°C

Catalog Code Description:

**Block Series**

**BH - 2 X X X S**

**Agency Approval**

- 0 No Agency Approval
- 1 UL Recognition and CSA Certification
- 2 UL Recognition Only
- 3 CSA Certification Only

**Wire Connector**

- 0 No Connector
- 3 2 Hole for #6 - 250MCM Copper Wire (for use with Base 1, 2, & 3)

**Optional control wire screw**

**Stud Size**

- 1/4 - 20
- 25/16 - 18
- 3/8 - 16

- NOTES:**
1. Always check applicable end use standards for required spacing between blocks, fuses or other hardware.
  2. For applications above 700V, consult appropriate electrical standard for proper creepage distances, clearance distances and insulator voltage withstand ratings.

CE logo denotes compliance with European Union Low Voltage Directive (50-1000 VAC, 75-1500 VDC). Refer to BIF document #8002 or contact Bussmann Application Engineering at 314-527-1270 for more information.

# Modular Fuseblocks

## for High-Speed Semiconductor Fuses

### 0-5000 Volts, 600 Amps

## BH-2 Series

### Electrical Characteristics

Buss Cat. No.	Fuseblock Part No.	Stud Ref.	Fuse Volt Rating	Dimensions mm / Inches		
				"A"	"B"	"C"
170E7183	BH-2033	$\frac{3}{8}$	5000V	450.09 / 17.720	629.41 / 24.780	495.05 / 19.490
170E7184	BH-2033	$\frac{3}{8}$	5000V	450.09 / 17.720	629.41 / 24.780	495.05 / 19.490
170E7185	BH-2033	$\frac{3}{8}$	5000V	450.09 / 17.720	629.41 / 24.780	495.05 / 19.490
170E7187	BH-2033	$\frac{3}{8}$	5000V	450.09 / 17.720	629.41 / 24.780	495.05 / 19.490
170E7188	BH-2033	$\frac{3}{8}$	5000V	450.09 / 17.720	629.41 / 24.780	495.05 / 19.490
170E7189	BH-2033	$\frac{3}{8}$	5000V	450.09 / 17.720	629.41 / 24.780	495.05 / 19.490
170E8129	BH-2033	$\frac{3}{8}$	3300V	163.07 / 6.420	342.39 / 13.480	208.03 / 8.190
170E9629	BH-2033	$\frac{3}{8}$	4000V	299.97 / 11.810	479.30 / 18.870	344.93 / 13.580
170E9630	BH-2033	$\frac{3}{8}$	4000V	299.97 / 11.810	479.30 / 18.870	344.93 / 13.580

The only controlled copy of this BIF document is the electronic read-only version located on the Bussmann Network Drive. All other copies of this document are by definition uncontrolled. This bulletin is intended to clearly present comprehensive product data and provide technical information that will help the end user with design applications. Bussmann reserves the right, without notice, to change design or construction of any products and to discontinue or limit distribution of any products. Bussmann also reserves the right to change or update, without notice, any technical information contained in this bulletin. Once a product has been selected, it should be tested by the user in all possible applications.

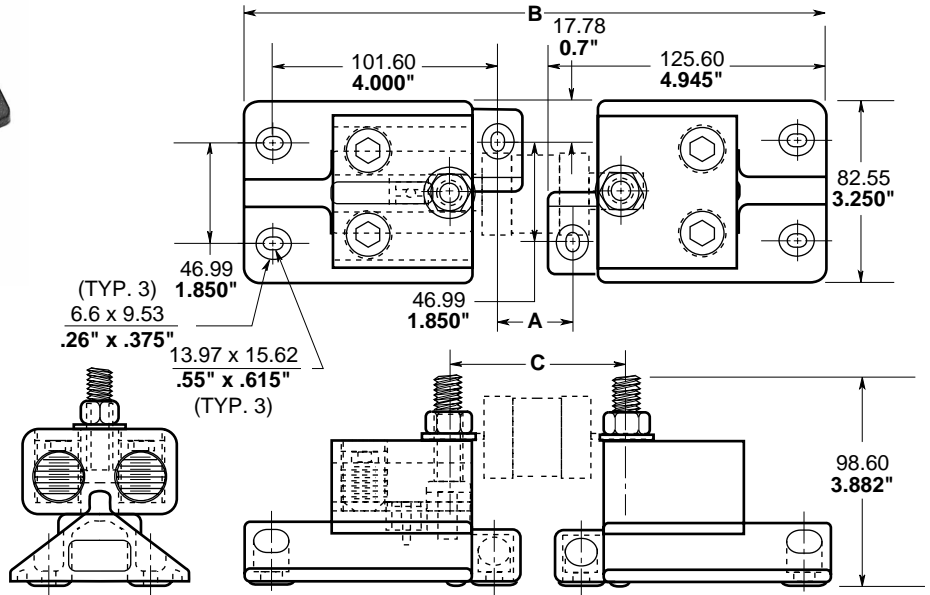
# Modular Fuseblocks

## 0-1250 Volts, 700 Amps

# BH-3 Series



Dimensional Data  $\frac{\text{mm} (\pm .25)}{\text{Inches} (\pm .01)}$



- Catalog Symbol: BH-3 Series
- Base: Light weight, high temperature thermoplastic
- Mounting Studs: Plated steel
- Connector: Tin-plated aluminum. Standard connector accepts #6 - 250MCM copper wire
- Nut: Plated steel
- Washer: Spring steel
- Agency Approvals:
  - U.L. Recognized, Guide IZLT2, File E14853 up to 700 Volts
  - CSA Certified, Class 6225-01, File 47235 up to 700 Volts
- Withstand Rating: 200,000A RMS Sym. or interrupting rating of fuse used, whichever is smaller.
- Temperature Rating (RTI): 140°C

Catalog Code Description:

**Block Series**

**BH - 3 X X X S**

**Agency Approval**

- 0 No Agency Approval
- 1 U.L. Recognition and CSA Certification
- 2 U.L. Recognition Only
- 3 CSA Certification Only

**Wire Connector**

- 0 No Connector
- 3 2 Hole for #6 - 250MCM Copper Wire (for use with Bases 1, 2, & 3)
- 4 2 Hole for #4 - 500MCM Copper Wire (for use with Base 3) - See Note 1 below

**Optional Control Wire Screw**

**Stud Size**

- 3/8 - 16L
- 4 7/16 - 14L
- 5/8 - 16L

- NOTES:
1. The #4 connector must be used with either the 7/16 - 14 or the 3/8 - 16L stud.
  2. The only compatible connector for the 7/16 - 14 stud is #4.
  3. Always check applicable end use standards for required spacing between blocks, fuses or other hardware.
  4. For applications above 700V, consult appropriate electrical standard for proper creepage distances, clearance distances and insulator.

CE CE logo denotes compliance with European Union Low Voltage Directive (50-1000 Vac, 75-1500 Vdc). Refer to BIF document #8002 or contact Bussmann Application Engineering at 314-527-1270 for more information.



# Modular Fuseblocks

## 0-1250 Volts, 700 Amps

# BH-3 Series

### Electrical Characteristics

Buss Cat. No.	Fuseblock Part No.	Stud Ref.	Fuse Volt Rating	Dimensions mm / Inches		
				"A"	"B"	"C"
FBP 250-400	BH-3144	7/16	700V	59.46 / 2.341	288.06 / 11.341	102.39 / 4.031
FBP 450-600	BH-3144	7/16	700V	65.02 / 2.56	293.62 / 11.56	107.95 / 4.25
FWA 450-600	BH-3145	3/8	150V	20.57 / 0.81	249.1 / 79.81	63.50 / 2.50
FWH 450A-600A	BH-3145	3/8	500V	46.74 / 1.84	275.34 / 10.84	89.68 / 3.53
FWP 450A-600A	BH-3144	7/16	700V	102.36 / 4.03	330.96 / 13.03	145.29 / 5.72
FWX 350A-600A	BH-3145	3/8	250V	31.75 / 1.25	260.35 / 10.25	74.68 / 2.94
JJN 450-600	BH-3144	7/16	300V	8.66 / 0.341	237.26 / 9.341	51.59 / 2.031
JJS 450-600	BH-3144	7/16	600V	32.08 / 1.263	260.68 / 10.263	75.01 / 2.953
JKS 225-400	BH-3145	3/8	600V	90.42 / 3.56	319.02 / 12.56	133.35 / 5.25
JKS 450-600	BH-3144	7/16	600V	109.47 / 4.31	338.07 / 13.31	152.40 / 6.00
KAA 450-600	BH-3145	3/8	130V	18.97 / 0.747	247.57 / 9.747	61.90 / 2.437
KAB 450-600	BH-3145	3/8	250V	27.71 / 1.091	256.31 / 10.091	70.64 / 2.781
KAC 225-400	BH-3144	7/16	600V	77.72 / 3.06	306.32 / 12.06	120.65 / 4.75
KAC 425-600	BH-3144	7/16	600V	77.72 / 3.06	306.32 / 3.06	120.65 / 4.75
KAX 450-600	BH-3145	3/8	250V	27.71 / 1.091	256.31 / 10.091	70.64 / 2.781
KBC 450-600	BH-3145	3/8	600V	60.33 / 2.372	288.85 / 11.372	103.17 / 4.062
KBP 450-600	BH-3144	7/16	700V	86.44 / 3.403	315.04 / 12.403	129.36 / 5.093
LPJ 225-400	BH-3145	3/8	600V	90.42 / 3.56	319.02 / 12.56	133.35 / 5.25
LPJ 450-600	BH-3144	7/16	600V	109.47 / 4.31	338.07 / 13.31	152.40 / 6.00
SPJ-5B 200-400	BH-3144	7/16	1000V	82.83 / 3.261	262.15 / 10.321	127.79 / 5.031
SPJ-5E 200-400	BH-3144	7/16	1000V	82.83 / 3.261	262.15 / 10.321	127.79 / 5.031
SPJ-6B 300-600	BH-3144	7/16	1000V	84.86 / 3.341	313.46 / 12.341	127.79 / 5.031
SPJ-6E 300-600	BH-3144	7/16	1000V	84.86 / 3.341	313.46 / 12.341	127.79 / 5.031
SPP-5B 225-600	BH-3144	7/16	700V	61.04 / 2.403	289.64 / 11.403	103.96 / 4.093
SPP-5E 225-600	BH-3144	7/16	700V	61.04 / 2.403	289.64 / 11.403	103.96 / 4.093
SPP-5F 225-600	BH-3144	7/16	700V	82.47 / 3.247	311.07 / 12.247	125.40 / 4.937
SPP-5H 225-600	BH-3144	7/16	700V	82.47 / 3.247	311.07 / 12.247	125.40 / 4.937
SPP-6B 300-600	BH-3144	7/16	700V	61.04 / 2.403	289.64 / 11.403	103.96 / 4.093
SPP-6E 300-600	BH-3144	7/16	700V	61.04 / 2.403	289.64 / 11.403	103.96 / 4.093
SPP-6F 300-600	BH-3144	7/16	700V	82.47 / 3.247	311.07 / 12.247	125.40 / 4.937
SPP-6H 300-600	BH-3144	7/16	700V	82.47 / 3.247	311.07 / 12.247	125.40 / 4.937
SPP-7B 450-600	BH-3144	7/16	700V	62.64 / 2.466	291.24 / 11.466	105.56 / 4.156
SPP-7E 450-600	BH-3144	7/16	700V	62.64 / 2.466	291.24 / 11.466	105.56 / 4.156
SPP-7F 450-600	BH-3144	7/16	700V	81.69 / 3.216	310.29 / 12.216	124.61 / 4.906
SPP-7H 450-600	BH-3144	7/16	700V	81.69 / 3.216	310.29 / 12.216	124.61 / 4.906
170L4702 thru 170L4720	BH-3145	3/8	1000V	67.06 / 2.64	295.66 / 11.642	109.98 / 4.33
170L5195 thru 170L5299	BH-3145	3/8	1000V	65.07 / 2.562	293.67 / 11.562	108.00 / 4.252
170L7295 thru 170L7296	BH-3145	3/8	1000V	65.07 / 2.562	293.67 / 11.562	108.00 / 4.252
170L7635 thru 170L7636	BH-3145	3/8	1000V	65.07 / 2.562	293.67 / 11.562	108.00 / 4.252
170L7697 thru 170L7699	BH-3145	3/8	1000V	65.07 / 2.562	293.67 / 11.562	108.00 / 4.252
170L8124 thru 170L8379	BH-3145	3/8	1000V	65.07 / 2.562	293.67 / 11.562	108.00 / 4.252
170L8423 thru 170L8429	BH-3145	3/8	1000V	65.07 / 2.562	293.67 / 11.562	108.00 / 4.252
170L8684 thru 170L8982	BH-3144	7/16	1000V	72.06 / 2.837	300.66 / 11.837	114.99 / 4.527
170L9300 thru 170L9302	BH-3144	7/16	1000V	72.06 / 2.837	300.66 / 11.837	114.99 / 4.527
170L9306 thru 170L9308	BH-3144	7/16	1000V	72.06 / 2.837	300.66 / 11.837	114.99 / 4.527
170M3020 thru 170M3023	BH-3145	3/8	660V	35.05 / 1.38	263.65 / 10.38	77.98 / 3.07
170M3070 thru 170M3073	BH-3145	3/8	660V	35.05 / 1.38	263.65 / 10.38	77.98 / 3.07
170M3120 thru 170M3123	BH-3145	3/8	660V	35.05 / 1.38	263.65 / 10.38	77.98 / 3.07
170M3170 thru 170M3173	BH-3145	3/8	660V	65.07 / 2.562	293.67 / 11.562	108.00 / 4.252
170M3220 thru 170M3223	BH-3145	3/8	660V	65.07 / 2.562	293.67 / 11.562	108.00 / 4.252
170M3270 thru 170M3273	BH-3145	3/8	660V	65.07 / 2.562	293.67 / 11.562	108.00 / 4.252
170M3320 thru 170M3323	BH-3144	7/16	660V	33.07 / 1.302	261.67 / 10.302	76.00 / 2.992
170M3370 thru 170M3373	BH-3144	7/16	660V	33.07 / 1.302	261.67 / 10.302	76.00 / 2.992

# Modular Fuseblocks

## 0-1250 Volts, 700 Amps

# BH-3 Series

### Electrical Characteristics (continued)

Buss Cat. No.	Fuseblock Part No.	Stud Ref.	Fuse Volt Rating	Dimensions mm / Inches		
				"A"	"B"	"C"
170M3620 thru 170M3623	BH-3145	3/8	660V	42.06 / 1.656	270.66 / 10.656	84.99 / 3.346
170M3670 thru 170M3673	BH-3145	3/8	660V	42.06 / 1.656	270.66 / 10.656	84.99 / 3.346
170M3720 thru 170M3723	BH-3145	3/8	660V	80.06 / 3.152	308.66 / 12.152	122.99 / 4.842
170M3770 thru 170M3773	BH-3145	3/8	660V	80.06 / 3.152	308.66 / 12.152	122.99 / 4.842
170M4008 thru 170M4017	BH-3145	3/8	660V	35.05 / 1.38	263.65 / 10.38	77.98 / 3.07
170M4058 thru 170M4067	BH-3145	3/8	660V	35.05 / 1.38	263.65 / 10.38	77.98 / 3.07
170M4108 thru 170M4117	BH-3145	3/8	660V	35.05 / 1.38	263.65 / 10.38	77.98 / 3.07
170M4138 thru 170M4247	BH-3145	3/8	1250V	65.07 / 2.562	293.67 / 11.562	108.00 / 4.252
170M4158 thru 170M4166	BH-3145	3/8	660V	65.07 / 2.562	293.67 / 11.562	108.00 / 4.252
170M4167 thru 170M4208	BH-3145	3/8	660V	65.07 / 2.562	293.67 / 11.562	108.00 / 4.252
170M4217 thru 170M4247	BH-3145	3/8	660V	65.07 / 2.562	293.67 / 11.562	108.00 / 4.252
170M4258 thru 170M4267	BH-3145	3/8	660V	65.07 / 2.562	293.67 / 11.562	108.00 / 4.252
170M4308 thru 170M4317	BH-3145	3/8	660V	43.08 / 1.696	271.68 / 10.696	86.00 / 3.386
170M4358 thru 170M4367	BH-3145	3/8	660V	43.08 / 1.696	271.68 / 10.696	86.00 / 3.386
170M4608 thru 170M4617	BH-3144	7/16	660V	61.06 / 2.404	289.66 / 11.404	103.99 / 4.094
170M4658 thru 170M4667	BH-3144	7/16	660V	61.06 / 2.404	289.66 / 11.404	103.99 / 4.09
170M4688 thru 170M4697	BH-3144	7/16	1250V	84.07 / 3.31	312.67 / 12.31	127.00 / 5.00
170M4708 thru 170M4717	BH-3144	7/16	660V	83.06 / 3.27	311.66 / 12.27	125.98 / 4.96
170M4738 thru 170M4747	BH-3144	7/16	1250V	84.07 / 3.31	312.67 / 12.31	127.00 / 5.00
170M4758 thru 170M4767	BH-3144	3/8	660V	83.06 / 3.27	311.66 / 12.27	125.98 / 4.96
170M5008 thru 170M5013	BH-3145	3/8	660V	35.05 / 1.38	263.65 / 10.38	77.98 / 3.07
170M5058 thru 170M5063	BH-3145	3/8	660V	35.05 / 1.38	263.65 / 10.38	77.98 / 3.07
170M5108 thru 170M5113	BH-3145	3/8	660V	35.05 / 1.38	263.65 / 10.38	77.98 / 3.07
170M5138 thru 170M5147	BH-3145	3/8	1250V	65.07 / 0.562	293.67 / 11.562	108.00 / 4.252
170M5158 thru 170M5163	BH-3145	3/8	660V	65.07 / 0.562	293.67 / 11.562	108.00 / 4.252
170M5188 thru 170M5197	BH-3145	3/8	1250V	65.07 / 0.562	293.67 / 11.562	108.00 / 4.252
170M5208 thru 170M5213	BH-3145	3/8	660V	65.07 / 0.562	293.67 / 11.562	108.00 / 4.252
170M5238 thru 170M5247	BH-3145	3/8	1250V	65.07 / 0.562	293.67 / 11.562	108.00 / 4.252
170M5258 thru 170M5263	BH-3145	3/8	660V	65.07 / 0.562	293.67 / 11.562	108.00 / 4.252
170M5308 thru 170M5313	BH-3145	3/8	660V	48.08 / 1.893	276.68 / 10.893	91.01 / 3.583
170M5358 thru 170M5363	BH-3145	3/8	660V	48.08 / 1.893	276.68 / 10.893	91.01 / 3.583
170M5608 thru 170M5613	BH-3144	7/16	660V	62.08 / 2.444	290.68 / 11.444	105.00 / 4.134
170M5658 thru 170M5663	BH-3144	7/16	660V	62.08 / 2.444	290.68 / 11.444	105.00 / 4.134
170M5688 thru 170M5696	BH-3144	7/16	1250V	84.07 / 3.31	312.67 / 12.31	127.00 / 5.00
170M5708 thru 170M5713	BH-3144	7/16	660V	82.07 / 3.231	310.67 / 12.231	124.99 / 4.921
170M5738 thru 170M5746	BH-3144	7/16	1250V	84.07 / 3.31	312.67 / 12.31	127.00 / 5.00
170M5758 thru 170M5763	BH-3144	7/16	660V	82.07 / 3.231	310.67 / 12.231	124.99 / 4.921
170M6008 thru 170M6011	BH-3145	3/8	660V	35.05 / 1.38	263.65 / 10.38	77.98 / 3.07
170M6058 thru 170M6061	BH-3145	3/8	660V	35.05 / 1.38	263.65 / 10.38	77.98 / 3.07
170M6108 thru 170M6111	BH-3145	3/8	660V	35.05 / 1.38	263.65 / 10.38	77.98 / 3.07
170M6138 thru 170M6145	BH-3145	3/8	1250V	65.07 / 2.562	293.67 / 11.562	108.00 / 4.252
170M6158 thru 170M6161	BH-3145	3/8	660V	65.07 / 2.562	293.67 / 11.562	108.00 / 4.252
170M6188 thru 170M6195	BH-3145	3/8	1250V	65.07 / 2.562	293.67 / 11.562	108.00 / 4.252
170M6208 thru 170M6211	BH-3145	3/8	660V	65.07 / 2.562	293.67 / 11.562	108.00 / 4.252
170M6238 thru 170M6245	BH-3145	3/8	1250V	65.07 / 2.562	293.67 / 11.562	108.00 / 4.252
170M6258 thru 170M6261	BH-3145	3/8	660V	65.07 / 2.562	293.67 / 11.562	108.00 / 4.252
170M6308 thru 170M6311	BH-3144	7/16	660V	48.08 / 1.893	276.68 / 10.893	91.01 / 3.583
170M6358 thru 170M6361	BH-3144	7/16	660V	48.08 / 1.893	276.68 / 10.893	91.01 / 3.583

The only controlled copy of this BIF document is the electronic read-only version located on the Bussmann Network Drive. All other copies of this document are by definition uncontrolled. This bulletin is intended to clearly present comprehensive product data and provide technical information that will help the end user with design applications. Bussmann reserves the right, without notice, to change design or construction of any products and to discontinue or limit distribution of any products. Bussmann also reserves the right to change or update, without notice, any technical information contained in this bulletin. Once a product has been selected, it should be tested by the user in all possible applications.