

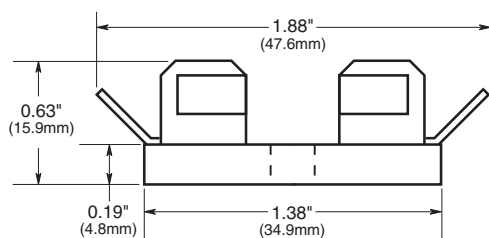
For 1/4" x 1" Fuses



**Series 3828**

**Solder Terminals Fuseblock for 1/4" x 1" Fuses**

(6.4mm x 25.4mm)



**Catalog And Dimensional Data**

Catalog Number	No. of Poles	*Base Length	
		inches	mm
3828-1	1	1/2	12.7
3828-2	2	1 1/8	28.6
3828-3	3	1 3/4	44.5
3828-4	4	2 3/8	60.3
3828-5	5	3	76.2
3828-6	6	3 3/8	92.1
3828-7	7	4 1/4	108.0
3828-8	8	4 7/8	123.8
3828-10	10	6 1/8	155.6
3828-12	12	7 3/8	187.3

\*Small phenolic base, base width 1 3/8" (34.9mm)

Note—Mounting screw hole diameter is 0.147" (3.7mm) Max. Mounting Screw No. 6.

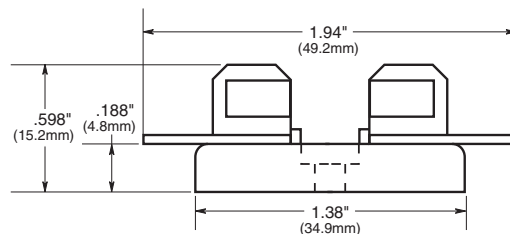


**4520 and 4393**

**Single Pole Fuseblock for 1/4" x 1" Fuses**

Bakelite base; Width 1/2" (12.7mm). Spring-bronze, Albaloy-plated clips. Rated 30 amperes, 250 volts.

**No. 4520**—Solder terminals; straight; integral clip and terminal.



**No. 4393**—Spare fuseblock.

Note—Mounting screw hole diameter is 0.147" (3.7mm), counterbore 0.636" (8.0mm) diameter. Max. Mounting Screw No. 6.

