

Selecting Your Labeling / Identification Software



CODESOFT™

Bar code technology has been behind the scenes in industries like Automotive and Manufacturing for decades, and CODESOFT bar code labeling and integration software has been leading the way with a full complement of advanced features that offer an enhanced level of data connectivity, security and interoperability. Best used for bar coding, rating plate, complex and graphic intensive labeling.

Page 202



MarkWare™

MarkWare is a powerful and versatile software for facility identification. Meet all of your requirements easily using the built-in library of 800+ symbols and pictograms, 2000 chemical database for RTK labels, built-in templates and much more. Easily create your important messages in a clearly understood manner. Depending on your Brady printer MarkWare can deliver single, multiple color, and die-cut output.

Page 204



LabelMark™

This versatile label design software is written specifically for identification applications in the telecomm, electrical and general industrial markets. LabelMark V3 is the logical solution for label design, editing and printing.

Page 206

GENERAL

Versions Available	3	1	2
Site License			X
Network Versions	X	X	
Pre-programmed Formats	Die-cut, Continuous, Tags	Pre-printed Sheet-fed Blanks, Cont.	Die-cut, Continuous, Tags
Pre-programmed ANSI/OSHA/GENERAL Facility ID Templates		X	
Right-To-Know Templates		X	
Advanced Security (User Manager)	Enterprise only		
Basic Security (Password Protect)	X	X	
Multiple Label Display			X
Application Specific Template Wizard		X	
Multi-Language Capability	21	11	7
Simple Fixed Line Entry Mode			X
Wiremarker Mode			X
Multiple Print Zones			

COMMON APPLICATIONS

Rating Plate Creation	X		
Wire Marking			X
Component Labeling			X
Asset ID	X		X
Terminal Block ID			X
Patch Panel ID			X
Face Plate ID			X
Industrial Labeling	X	X	
Bin Shelf Labeling	X	X	X
Facility Identification (Signs, PipeMarkers)		X	
Tag Creation		X	
Hazardous Communications (Right to Know, WHIMS)		X	
Energy Source Labeling		X	
Lockout Procedures			
Work In Process Labeling	X		
Product Appeal Labeling	X	X	
General Bar Code Labeling	X		X
Slide and Vial Identification			
Compliance Labeling	X		
Shipping Applications	X		
Logistics	X	X	X

PRINTERS AND PRINTING

Internal Thermal Printer Support (650+ Printers)	X		
Output Capability	Color, Grayscale	Color, Grayscale	Black/White
Batch Printing	Enterprise only	X	
Terminal Block Printing			X
Two-sided sleeve printing			X
110 Block Printing Templates			X
TLS 2200® Peripheral Printing (page 16)			X
Standard Windows® Print Drivers	X		X
GlobalMark™ Peripheral Printing (page 75)		X	
PowerMark® Peripheral Printing		X	
HandiMark® Peripheral Printing (page 50)		X	
Labelizer® Plus / VersaPrinter™		X	
LABXPRT™ Peripheral Printing			
TLS PC Link™ Peripheral Printing (page 16)	X		X



ChemLabel™

Poorly and inaccurately labeled chemicals and other dangerous materials represent potentially serious safety problems. Brady's new ChemLabel Wizard interface makes choosing and creating the correct identification simple and easy.

Page 205

**IdentiLab™**

Designed specifically for laboratory users, Identilab is loaded with capabilities to provide you with an all-in-one solution to meet your labeling needs.

Page 208




Surf on Signs™

Thousands of pre-made signs and labels; simply search for what you need and print it. You can also translate the message into a different language or edit the message prior to printing.

Page 209



Lock Out PRO™



Regulatory software designed to make Brady Lockout PRO Graphical Procedure Writing Software provides all the tools you need to create an effective, compliant energy control program with standardized procedures that are easy to follow. Lockout tags and labels can be printed for each energy source and are cross-referenced to the procedure, making Lockout activities virtually foolproof.

Page 210

[illegible]

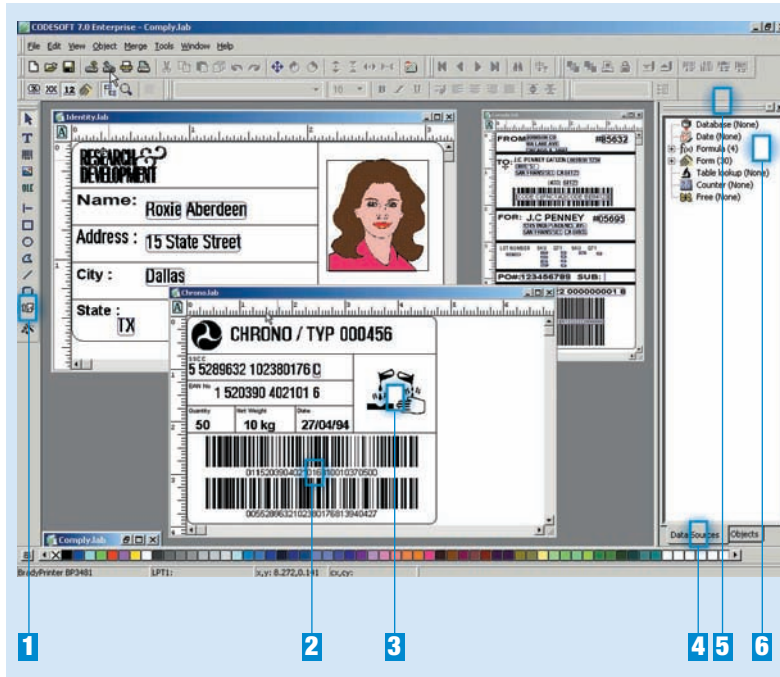
CODESOFT™ 7 Label Design Software



Bar code technology has been behind the scenes in industries like Automotive and Manufacturing for decades, and CODESOFT bar code labeling and integration software has been leading the way with a full complement of advanced features that offer an enhanced level of data connectivity, security and interoperability.

CODESOFT 7 label design software gives you the power to design and print labels with ease and flexibility. Whether you need to print text, bar codes or graphic images, fixed or variable data, user defined or database driven. It supports TrueType fonts, bar codes from 41 standards, two-dimensional codes from 9 symbologies and the ability to print to over 1000 thermal transfer printers and all Windows® compatible printers.

EASY INTERFACE



1 Shapes

Circles, ellipses, oblique lines, rounded rectangles and polygons can be designed and custom colored.

2 Linear and 2D Bar Codes

Includes all popular linear symbologies, plus new 2D bar codes including PDF417, Aztec Code and Data Matrix.

3 Industrial Graphics

Choose from hundreds of industrial graphics for specific industries.

4 Data Sources

Share fields among labels, count labels and use formulas to comply with standards.

5 Document Browser

The interface lists every object and allows quick access to modifications.

6 Drag-and-Drop Design

Select the object to define (text, bar code or graphic), then just drag-and-drop the variable name from the label browser into the workspace.

NEW TO CODESOFT 7

- ▶ Connect to any **UNICODE** data source and print multilingual labels instantaneously
- ▶ **Enhanced Shape Tool** provides ease in creating boxes, circles and freehand shapes
- ▶ Access to hundreds of **Industrial Graphic** files
- ▶ New **Variable Manager** allows you to share common data easily and efficiently between print stations
- ▶ New **Pack List** provides an easy way to assign drop down lists at the label creation center
- ▶ **Log Reports** provide visibility to what and when data is printed
- ▶ A streamlined interface now allows for easier administration of Network installations
- ▶ New **Command File** tool populate print jobs automatically (additional purchase necessary)

► **ADDITIONAL FEATURES**

- Works with over 1000 thermal transfer printers and all Windows® compatible printers
- Available in 21 languages
- Database Manager and ODBC compatibility makes it easy to design labels and utilize database information
- Native ASCII file support
- Supports custom SQL statements for advanced data extraction
- OLE Automation supports object integration from any third party Windows® application
- Convert option makes it easy to open, print and save non-CODESOFT label files

► **SYSTEM REQUIREMENTS**

- Windows® 98/ME/2000/NT/XP
- 64 MB of RAM (128 MB Recommended)
- Hard Drive with at least 200MB of free disk space
- CD-ROM Drive
- USB 1.1 (minimum) Port (Parallel versions available upon request)

► **CODESOFT ENTERPRISE**

Description	Part Number
Stand Alone Version	CS7-ENTER-USB
Network Version (5 Users)	CS7-NET5-USB
PRINT Only Version	CS7-RUN-USB

CODESOFT™ 7 Enterprise incorporates Windows® functionality and ease-of-use for designing and printing labels on over 1000 thermal transfer and all Windows compatible printers. Available in stand alone, PRINT ONLY (Label manipulation is not allowed), and Network versions (Available in multiples of 5 users).

► **CODESOFT PREMIER**

Description	Part Number
Stand alone only	CS7-PREM-USB

CODESOFT™ 7 Premier is a lower cost alternative to Enterprise, with less advanced features. Fully functional solution with all bar code, graphic, text and MOST variable capabilities. If your looking for a robust labeling solution without the added level of security and bolt-on complimentary applications, CODESOFT Premier is the software for you.

► **CODESOFT SPRINT**

Description	Part Number
Stand Alone Version	CS7-SPRINT-USB

CODESOFT™ 7 Sprint is an entry level label design application. Built specifically for users that require simplistic, hand keyed information with minimal bar code support. If you're looking for a basic label package to get you through a few small, basic print jobs; CODESOFT Sprint maybe the software of choice.

CODESOFT Version Features	SPRINT	PREMIER	ENTERPRISE
GENERAL			
Print Only Version			●
Network Version			●
UNICODE	●	●	●
Multi-level undo	1	40	40
Password (1 level)		●	●
Lock/Unlock Objects			●
Export Label as graphic			●
TCP/IP Printing		●	●
Unprintable Objects		●	●
Graphic Bar Codes	9	ALL	ALL
Native printer Codes	●	●	●
Fit to Frame Option			●
Object Positioning (Free Form Design)		●	●
TOOLS			
User Manager (Advanced Security)			●
Printing Logfile			●
FEATURES			
ASCII/ODBC/OLE DB Support		●	●
Multiple Tables			●
Counting Bases	Dec	Dec/Alpha	ALL

For a larger feature matrix visit us at: www.bradylid.com/codesoft.

► **COMPATIBLE BRADY SYSTEMS WITH CODESOFT™ 7 LABEL DESIGN SOFTWARE**

MVP Series



Wraprotor™



1244/1344 Series

TLS PC Link™
Thermal Labeling System

X-Plus Series



PAM 3000



Tagus Series

MarkWare™ Facility Identification Software



Part Number	Description
20700	MarkWare Software Kit
20711	Software and Laminating Kit

► INDUSTRIAL SAFETY SYMBOLS LIBRARY

MarkWare's built-in library gives you ready access to over 1000!! high-quality, scalable safety symbols and industrial pictograms



► COMPATIBLE BRADY SYSTEMS WITH MARKWARE™ FACILITY ID SOFTWARE



**Machines no longer available.*

MarkWare Software covers all your safety and facility identification needs in one powerful package.

- Use your PC to quickly design professional looking signs and labels
- Print directly to a Brady labeling system or most Windows® inkjet/laser printers
- Use preformatted templates provided for quick and easy label creation
- Or freely customize label layouts to your own specifications
- **2,000 chemical database** for creating OSHA Right-to-Know labels
- Import logos, photos and other graphics in **9** different file formats
- Create bar codes using **15** different symbologies
- Complete drawing toolkit (hot shapes, fill patterns, freeform lines, etc.)
- Link label contents to information stored in spreadsheets and databases
- Use any font on your PC (special pipemarkers font also included)
- User interface can be displayed in 12 languages, including Spanish

► MARKWARE SYSTEM REQUIREMENTS

- PC running Windows® 98 SE, NT 4.0 SP6, 2000 or XP
- 486 DX / 33 MHz or better processor
- 32 MB RAM (128 MB recommended)
- 90 MB available hard disk space
- 256-color, 640 x 480 pixel or better display
- CD-ROM drive (for installing software)

► PREFORMATTED SIGN AND LABEL TEMPLATES

MarkWare software provides templates for a broad range of industrial sign and label applications, including OSHA/ANSI safety signs, equipment labels, maintenance and quality control tags, pipemarkers, asset ID labels, DOT shipping placards, RTK chemical labels, and more!

1. Pick a template
2. Type in the legend
3. Select a sign header
4. You are ready to print



► RIGHT-TO-KNOW CHEMICAL LABELING APPLICATION

MarkWare software contains a database covering 2,000 commonly used chemicals as a reference for creating OSHA RTK-compliant labels

1. Select a chemical
2. Review label information
3. Insert into NFPA format
4. Or Brady color bar format



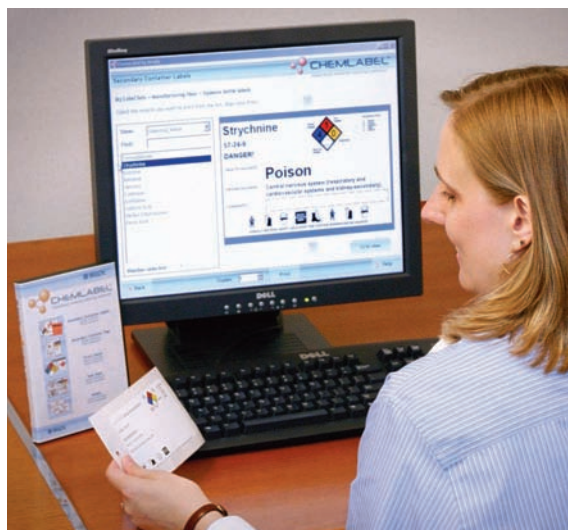
► RIGHT-TO-KNOW CHEMICAL LABELING APPLICATION

Pipe marker application makes creating ANSI/ASME-compliant pipe markers a snap

1. Select type of pipe marker
2. Select size and format
3. Enter text and arrows
4. Pipe marker is done



ChemLabel™ Hazardous Material Labeling Software



Part Number	Description
50987	ChemLabel Software



► **COMPATIBLE BRADY SYSTEMS WITH CHEMLABEL™ HAZARDOUS MATERIAL LABELING SOFTWARE**



GlobalMark™
Industrial Label Maker



PowerMark®
Sign and Label Maker



HandiMark®
Portable Label Maker



Labelizer® PLUS*
Industrial Labeling System



Versa Printer™*
Label and Sign Maker

*Machines no longer available.

Brady's ChemLabel™ Software helps keep employees safe by ensuring properly labeled chemicals.

Poorly and inaccurately labeled chemicals and other dangerous materials represent potentially serious safety problems. Brady's new ChemLabel Hazardous Material Labeling Software will make it easy to create and print labels for hazardous substances.

Use anywhere chemicals are labeled!

ChemLabel Hazardous Material Labeling Software is an extremely useful tool for factories, hospitals, laboratories, or anywhere chemicals and other hazardous materials are used and stored.

► **FEATURES**

- On-screen wizards to guide you through the process of linking data from a chemical database to a label layout, ensuring that the chemical labels you need contain the right information
- The option to use the Genium Companion Database, containing over 2,000 commonly used chemicals, or your own chemical database
- A complete stock of pre-designed templates and a full range of editing/drawing tools, making it easy to print chemical labels in the exact layout desired
- A connection to Brady industrial printers and supplies, ensuring accuracy and durability
- An extensive online help system providing detailed information and instructions
- Patent No. 5823689

► **SYSTEM REQUIREMENTS**

- Pentium® processor
- Windows® 98 with Internet Explorer 5.01
- Windows® 2000 with Service Pack 6a
- Windows® XP
- 64 MB RAM
- 175 MB available hard disk space
- 16-bit or greater video card
- 800 x 600 pixel or better display
- CD-ROM drive (for installing software)

LabelMark™ V3 Labeling Software



Part Number	Description
LM3	Full Version CD-ROM
LM3-UP	Upgrade Version CD-ROM
LM3-SITE	Site license

COMPATIBLE BRADY SYSTEMS WITH LABELMARK™ V3 LABELING SOFTWARE



MVP Series



Wraprot™



1244/1344 Series

TLS PC Link™
Thermal Labeling System

X-Plus Series



PAM 3000

TLS 2200®
Thermal Labeling System

Tagus Series

NetDoc™
Network Documentation
and Cable Management
Software

Easy, efficient, cost-effective labeling!

This versatile label design software is written specifically for identification applications in the telecomm, electrical, laboratory and general industrial markets. LabelMark V3 is the logical solution for label design, editing and printing.

LabelMark V3 is **two** programs in one package, *LabelMark* is the standard application for "fixed-line" text-only labels, while *LabelMark Plus* includes all *LabelMark* features, as well as allowing you to add graphic images, bar codes, rectangles and lines anywhere on your labels.

STANDARD LABELMARK FEATURES

- ▶ Multi-label view for true WYSIWYG representation of label formats
- ▶ Simple text entry, formatting and editing
- ▶ Versatile serialization creation from simple to advanced
- ▶ Automatic legend repeat for quick wire marker label creation
- ▶ Data Import support including ASCII, ODBC and OLE DB
- ▶ Accommodates all Brady stock and custom formats
- ▶ Supports most WINDOWS® printer drivers and is compatible with Brady's TLS2200®, TLS PC Link™ portable printers and Wraprot™ wire ID printer applicator
- ▶ Includes an image library of common electrical, datacomm and safety symbols
- ▶ Several common bar code symbologies available

NEW LABELMARK V3 FEATURES

- ▶ A date/time feature for easy insertion of date and/or time fields into the labels
- ▶ Improved and simplified serialization feature with a wizard that guides users through advanced serialization
- ▶ Simplified data importing for spreadsheets and ASCII text files. A wizard guides the user through the data import functions
- ▶ New label formatting and editing features for easier label creation
- ▶ Easy creation and editing of label templates
- ▶ Redesigned toolbars and menus for easy access to all program features
- ▶ Find and Replace feature for easy search and replacement of text in label files
- ▶ Pre-installed common industrial symbols and label part templates

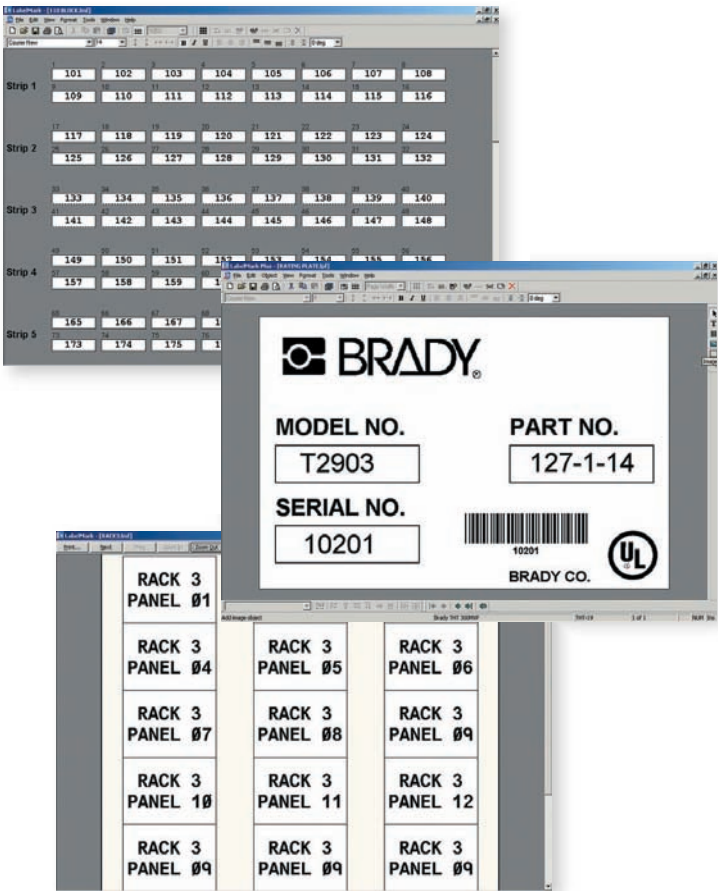
LabelMark™ V3 Labeling Software

PRIMARY APPLICATIONS




- ▶ Wire and cable marking
- ▶ Terminal block marking
- ▶ Control panel and component marking
- ▶ Rating plate Identification
- ▶ Quality assurance labeling
- ▶ Voice and data equipment labeling
- ▶ Asset Identification
- ▶ 110 block marking
- ▶ Patch panel identification
- ▶ Conduit and voltage marking
- ▶ Cable tray identification
- ▶ Warehouse bin and shelf labeling
- ▶ Inventory control

SYSTEM REQUIREMENTS

- ▶ Intel Pentium processor (minimum 66 MHz 486DX2)
- ▶ Windows® 98/2000/NT/XP
- ▶ Microsoft Internet Explorer 5.01
- ▶ 64 MB of RAM (minimum 16 MB)
- ▶ Hard Drive with at least 100 MB of free disk space
- ▶ CD-ROM Drive
- ▶ 16-bit or greater video display card
- ▶ 800 x 600 or greater monitor resolution



LabelMark™ Feature

			
Simple Fixed Line Entry Mode	●		
Free-form label design		●	
Multi-Label Display	●	●	
Multi-Label Editing	●	●	
Auto legend repeat (Wire marker Mode)	●	●	
Serialization	●	●	
Date/Time Stamp	●	●	
ASCII, ODBC and OLE DB Import	●	●	
Text block creation		●	
Bar codes		●	
Graphic Images		●	
Lines and rectangles		●	
Symbol Library		●	

IdentiLab™ Laboratory Labeling Software

BRADY

IDENTILAB™

Laboratory Labeling Software



Part Number	Description
IDL	IdentiLab Version 1.0

COMPATIBLE BRADY SYSTEMS WITH IDENTILAB™ LABORATORY LABELING SOFTWARE



MVP Series



X-Plus Series



1244/1344 Series

TLS PC Link™
Thermal Labeling SystemTLS 2200®
Thermal Labeling SystemIDXPert™
Handheld Labeler

IMAGINE Legible, Professional Labels for Your Lab Samples in Just Minutes!

Create files, templates and more with the easy-to-use wizards in Brady's IdentiLab Laboratory Labeling Software.

The streamlined interface and hundreds of parts and graphics categorized by common lab applications makes creating legible, durable and accurate labels quick and easy.

- Easy-to-use wizards to create new files and templates
- Superscript and subscript characters
- Database import capabilities with refresh feature to ensure data integrity
- Automatic text formatting
- 2-D bar code support
- Multi-label data entry view
- Die cut and continuous label supplies
- Compatibility with a variety of Brady printers including LABXPERT™ Laboratory Labeling System, TLS 2200® Thermal Labeling System, TLS PC Link™ Thermal Labeling System, all Bradyprinter™ models, and all Windows-based printers.

SYSTEM REQUIREMENTS

- Intel Pentium® processor
- Operating System
Windows® 98
Windows® 2000 with Service Pack 1
Windows® NT with Service Pack 6a
Windows® XP
- Microsoft Internet Explorer 5.01
- 64 MB of RAM (minimum 16 MB of RAM)
- 100 MB of available hard-disk space
- 16-bit or greater video display card
- 800 x 600 or greater monitor resolution
- CD-ROM Drive

PRINT YOUR LABELS IN THREE SIMPLE STEPS

Step 1: Choose a category of label type to fit your Lab Application.

Step 2: Select your printer and the label part you have installed.

Step 3: Type your label text onto label preview to see your whole print job on screen!

Click Print

Surf on Signs™ Signs and Labels Database



Part Number	Description
98200	Surf on Signs CD



► CUSTOMIZE A TEMPLATE TO FIT YOUR EXACT NEEDS

- Simply print error-free signs, labels, pipe markers and tags using Surf on Signs
- Edit feature allows you to personalize and save the customized legend and have it available for future use
- Translate feature allows you to print messages in English, French, Spanish or bi-lingual formats

► COMPATIBLE BRADY SYSTEMS WITH SURF ON SIGNS™ SIGNS AND LABELS DATABASE



GlobalMark™
Industrial Label Maker



PowerMark®
Sign and Label Maker



HandiMark®
Portable Label Maker



Labelizer® PLUS*
Industrial Labeling System



Versa Printer™**
Label and Sign Maker

*Machines no longer available.

With Surf on Signs CD, thousands of pre-made signs and labels are just a click away!

Need custom? No problem.

- Surf on Signs legends can be edited by you
- Custom legends you can create can be saved
- Follow the step-by-step directions
- Click and print

¿Habla español? ¡Si! ¡Si!

- All legends ready-to-print in Spanish*
- Also available in bi-lingual format

Parlez-vous Français? Oui! Oui!

- All legends ready-to-print in French*
- Also available in bi-lingual format

* Please note that the Surf-on-Signs CD does not feature translation software and will not translate custom legends; all French and Spanish legends are provided by Brady.

Fast. Accurate. Amazing!

- Signs, labels, tags, pipe markers
- Thousands of stock legends
- High-speed search gives you instant access
- Ready-to-print format is error-free, hassle-free
- Just click and print

Step-by-Step Simplicity

- Connect your computer with your Brady printer
- Pop Surf-on-Signs CD into your computer drive
- Follow the step-by-step directions
- Just click and print

All in the format you need

- OSHA and ANSI format signs and tags
- ANSI-ASME pipe markers
- And more—all ready to print

► SYSTEM REQUIREMENTS

- Pentium Processor
- Windows® 98 with Internet Explorer 5.01
- Windows® 2000 with Service Pack 1
- Windows® NT with Service Pack 6a
- Windows® XP
- 64 MB RAM
- 50 MB available hard disk space
- 16-bit or greater video card
- 800 x 600 or greater monitor resolution
- CD-ROM drive

Lockout PRO™ Graphical Procedure Writing Software



- ▶ The use of easy-to-follow procedures helps to prevent mistakes and makes lockout tasks more efficient, reducing downtime
- ▶ Lockout PRO's intuitive user interface speeds you through the process of creating OSHA-compliant lockout procedures, tags and energy source labels
- ▶ Allows you to insert digital photos so employees can locate the correct control points quickly
- ▶ Standardized formats promote easy understanding and consistent use of prescribed safe work practices
- ▶ Also includes complete user-editable energy control policy and employee training tools

▶ ADDITIONAL FEATURES

- ▶ Display the user interface and create procedures in English, Spanish, French or Portugese
- ▶ Export procedures for use with CMMS and ERP systems
- ▶ Includes employee training tools and editable corporate LO/TO policy
- ▶ Automatically generate tags and labels for each energy source

▶ HIGHLIGHTED FEATURES

- A** Customize text fields to fit your needs
- B** Input digital photos and identify control points
- C** Customize icons and colors as desired
- D** Use predefined instructions or type in your own text

Part Number	Description
65918	Lockout PRO software
58981	Lockout PRO, BLS850 laminator ¹
90843	Lockout PRO, D-560 digital camera ²
58982	Lockout PRO, laminator and camera
58977	Lockout PRO Viewer ³
58978	Lockout PRO for Pocket PC

¹ Small, lightweight laminator works without electricity, heat or messy chemicals. Accommodates single or double-sided lamination of documents up to 8 inches wide.

² Compact Olympus® digital camera featuring a 3.2-megapixel CCD and 3x optical/10x seamless digital zoom lens.

³ Allows users to view and print Lockout Pro procedures, tags and labels, but not create or edit the procedures.

⁴ Data collection utility that allows procedures to be created on a handheld device running Microsoft's Pocket PC operating system. Used in conjunction with Lockout PRO or Lockout PRO Enterprise.

▶ SYSTEM REQUIREMENTS

- ▶ Windows NT4.0, 98se, ME, 2000 and XP operating systems
- ▶ Microsoft Internet Explorer 5.01 or higher
- ▶ Processor: 486 / 66 MHz (Pentium recommended)
- ▶ Disk space: 90 MB
- ▶ Screen resolution: 800 x 600 minimum (1024 x 768 preferred)

Lockout-Tagout Posted Procedure

LOCKOUT PRO™
Graphical Procedure Writing Software

ID#: CMA-2 430266
Created: 1/23/2003 12:19:48
Revised: 8/28/2003 4:51:17 PM

Facility: Camden Road
Location: Cell 135149
Description: CSE 400-000 BTU Oven, Serial #56000

2 Lockout Points **Note:** This is an example of a Lockout Pro "Long Form". The long form lets you freely develop steps in the procedure and position photos next to the relevant instructions.

Lockout Application Process

1. Notify affected personnel. 2. Properly shut down machine. 3. Isolate all energy sources. 4. Apply lockout devices, locks, & tags. 5. Verify total de-energization of all sources.

Step #	Action	Info
1.	This machine generates extremely high temperatures. Leave door open for at least one hour to allow for proper cooling.	The door is located on the West side of the machine.
2.	The E-1 Disconnect is located on the Front side of the machine. Using a Lock, turn Disconnect to the off position and lock out at E-1.	<p>Main Control Panel</p> <p>Natural Gas Valve</p>
4.	Confirm that energy has been isolated by attempting to restart at the main control panel.	Main control panel is located on the west side of the machine.

Lockout Removal Process

1. Ensure all tools and items have been removed. 2. Confirm that all employees are safely located. 3. Verify that controls are in neutral. 4. Remove lockout devices and reenergize machine. 5. Notify affected employees that servicing is completed.

Brady Lockout PRO Graphical Lockout Procedure Writing Software

Lockout PRO™ Graphical Procedure Writing Software

► LOCKOUT PRO OUTPUT OPTIONS

- Print procedures to plain paper using conventional inkjet/laser printers.
- For greater durability, print procedures, tags and energy source labels using Brady's GlobalMark™ Industrial Labeling System. Energy source labels can also be printed to Brady's HandiMark® Portable Label Maker.



Lockout PRO™ Enterprise

- Lockout PRO™ software for use on a server-based network
- Supports multi-user collaborative procedure management
- Allows employees to view and print procedures from a web browser
- Has built-in lockout activity tracking feature
- Provides online training and tracks trainees' results
- Allows users to save and access lockout procedures created in other programs
- Procedures can be created offline for automatic uploading when connected to the network

► ENTERPRISE LICENSE OPTIONS

- **Basic license:** Installs on a single server. Limited to 3 administrators who can create and edit procedures. Anyone with access to the server can view and print procedures.
- **Server license:** Installs on a single server. Unlimited administrators. Anyone with access to the server can view and print procedures.
- **Corporate license:** Installs on multiple servers. Unlimited administrators. Anyone with access to the server can view and print procedures.

Part Number	Description
58975	Basic License
58979	Additional administrator (adds 1 administrator to Basic License)
65919	Server License
58976	Corporate License

► COMPATIBLE BRADY SYSTEMS WITH LOCKOUT PRO™ GRAPHICAL PROCEDURE WRITING SOFTWARE



GlobalMark™
Industrial Label Maker

HandiMark®
Portable Label Maker