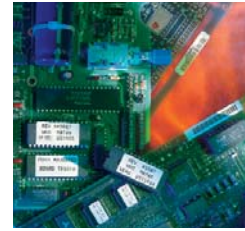
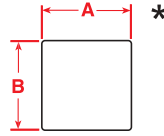


Circuit Board and Component Identification

CONTINUED

POLYESTER

Permanent White Polyester (B-422, B-423, B-459)
Static Dissipative Polyester (B-473)
Permanent Metallized Polyester (B-428)

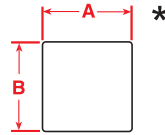


Part Number	Labels Per Roll	Label Dimensions		Maximum Characters Per Line For Font:			Maximum Lines Of Text For Font:			Maximum Bar Code Characters:	Through Hole Technology		SMT Top / Bottom	After Process
		A Inch (mm)	B Inch (mm)	1	4	6	1	4	6		Top	Bottom		
PTL-1-423	750	0.250 (6.35)	0.250 (6.35)	6	3	2	2	1	1	0	▲	×	×	●
PTL-1-473	750	0.250 (6.35)	0.250 (6.35)	6	3	2	2	1	1	0	▲	×	×	●
PTL-2-423	100	2.000 (50.80)	0.250 (6.35)	52	30	23	2	1	1	11	▲	×	×	●
PTL-3-423	500	0.375 (9.52)	0.375 (9.52)	10	5	4	4	2	2	0	▲	×	×	●
PTL-4-423	500	0.400 (10.16)	0.400 (10.16)	10	6	4	4	3	2	0	▲	×	×	●
PTL-5-423	750	0.500 (12.70)	0.200 (5.08)	13	7	5	2	1	1	0	▲	×	×	●
PTL-6-473	750	0.500 (12.70)	0.275 (6.98)	13	7	5	3	1	1	0	▲	×	×	●
PTL-6-423	750	0.500 (12.70)	0.275 (6.98)	13	7	5	3	1	1	0	▲	×	×	●
PTL-7-423	500	0.500 (12.70)	0.500 (12.70)	13	7	5	5	3	2	0	▲	×	×	●
PTL-5-473	750	0.500 (12.70)	0.200 (5.08)	13	7	5	2	1	1	0	▲	×	×	●
PTL-9-423	750	0.650 (16.51)	0.200 (5.08)	18	10	7	2	1	1	2	▲	×	×	●
PTL-9-473	750	0.650 (16.51)	0.200 (5.08)	18	10	7	2	1	1	2	▲	×	×	●
PTL-10-423	750	0.750 (19.05)	0.250 (6.35)	20	12	9	2	1	1	2	▲	×	×	●
PTL-10-473	750	0.750 (19.05)	0.250 (6.35)	20	12	9	2	1	1	2	▲	×	×	●
PTL-13-423	750	0.900 (22.86)	0.250 (6.35)	25	14	11	2	1	1	4	▲	×	×	●
PTL-14-423	750	1.000 (25.40)	0.187 (4.74)	28	16	12	2	1	1	4	▲	×	×	●
PTL-15-423	750	1.000 (25.40)	0.275 (6.98)	28	16	12	2	1	1	4	▲	×	×	●
PTL-15-428	750	1.000 (25.40)	0.275 (6.98)	28	16	12	2	1	1	4	▲	×	×	●
PTL-16-473	500	1.000 (25.40)	0.375 (9.52)	28	16	12	4	2	2	4	▲	×	×	●
PTL-16-423	500	1.000 (25.40)	0.375 (9.52)	28	16	12	4	2	2	4	▲	×	×	●
BPTL-16-423	5000	1.000 (25.40)	0.375 (9.52)	28	16	12	4	2	2	4	▲	×	×	●
PTL-17-473	500	1.000 (25.40)	0.500 (12.70)	28	16	12	5	3	2	4	▲	×	×	●
PTL-17-423	500	1.000 (25.40)	0.500 (12.70)	28	16	12	5	3	2	4	▲	×	×	●
PTL-17-428	500	1.000 (25.40)	0.500 (12.70)	28	16	12	5	3	2	4	▲	×	×	●
PTL-19-422	250	1.000 (25.40)	1.000 (25.40)	28	16	12	12	7	6	4	▲	×	×	●
PTL-19-423	250	1.000 (25.40)	1.000 (25.40)	28	16	12	12	7	6	4	▲	×	×	●
BPTL-19-423	2500	1.000 (25.40)	1.000 (25.40)	28	16	12	12	7	6	4	▲	×	×	●
PTL-20-423	100	2.000 (50.80)	1.000 (25.40)	52	30	23	12	7	6	11	▲	×	×	●
BPTL-20-423	1000	2.000 (50.80)	1.000 (25.40)	52	30	23	12	7	6	11	▲	×	×	●
PTL-20-459	100	2.000 (50.80)	1.000 (25.40)	52	30	23	12	7	6	11	▲	×	×	●
PTL-25-423	750	1.250 (31.75)	0.250 (6.35)	35	20	15	2	1	1	6	▲	×	×	●
PTL-26-423	100	2.750 (69.85)	1.250 (31.75)	50	29	19	13	6	4	18	▲	×	×	●
PTL-26-459	100	2.750 (69.85)	1.250 (31.75)	50	46	34	15	9	7	18	▲	×	×	●
PTL-27-423	750	1.500 (38.10)	0.125 (3.18)	42	0	0	1	0	0	8	▲	×	×	●
PTL-28-423	750	1.500 (38.10)	0.250 (6.35)	42	24	18	2	1	1	8	▲	×	×	●
PTL-28-473	750	1.500 (38.10)	0.250 (6.35)	42	24	18	2	1	1	8	▲	×	×	●
PTL-29-423	500	1.500 (38.10)	0.500 (12.70)	42	24	18	5	3	2	8	▲	×	×	●
BPTL-29-423	5000	1.500 (38.10)	0.500 (12.70)	42	24	18	5	3	2	8	▲	×	×	●
PTL-29-459	500	1.500 (38.10)	0.500 (12.70)	42	24	18	5	3	2	8	▲	×	×	●
PTL-30-459	250	1.500 (38.10)	0.750 (19.05)	42	24	18	9	5	4	8	▲	×	×	●
PTL-37-423	100	3.000 (76.20)	1.900 (48.26)	50	50	37	22	14	11	20	▲	×	×	●
PTL-38-423	100	4.000 (101.60)	1.900 (48.26)	50	50	50	22	14	11	25	▲	×	×	●
PTL-38-459	100	4.000 (101.60)	1.900 (48.26)	50	50	50	22	14	11	25	▲	×	×	●

* Any label two inches or larger is rotated on liner.

VINYL CLOTH

White Vinyl Cloth Repositional Adhesive (B-498)



Part Number	Labels Per Roll	Label Dimensions		Maximum Characters Per Line For Font:			Maximum Lines Of Text For Font:			Maximum Bar Code Characters:	Through Hole Technology		SMT Top / Bottom	After Process
		A Inch (mm)	B Inch (mm)	1	4	6	1	4	6		Top	Bottom		
PTL-7-498	500	0.500 (12.70)	0.500 (12.70)	13	7	5	5	3	2	▲	×	×	●	
PTL-10-498	750	0.750 (19.05)	0.250 (6.35)	6	3	2	9	5	4	▲	×	×	●	
PTL-15-498	750	1.000 (25.40)	0.275 (6.98)	28	16	12	2	1	1	▲	×	×	●	
PTL-16-498	500	1.000 (25.40)	0.375 (9.52)	10	5	4	12	7	6	▲	×	×	●	
PTL-17-498	500	1.000 (25.40)	0.500 (12.70)	28	16	12	5	3	2	▲	×	×	●	
PTL-29-498	500	1.500 (38.10)	0.500 (12.70)	13	7	5	18	11	9	▲	×	×	●	
BPTL-29-498	5000	1.500 (38.10)	0.500 (12.70)	13	7	5	18	11	9	▲	×	×	●	
PTL-32-498	250	1.500 (38.10)	1.500 (38.10)	42	24	18	18	11	9	▲	×	×	●	

* Vinyl cloth material is not recommended for bar code printing.

- Yes, this material will work with this application.
- × No, this material does not work with this application.
- ▲ In extreme high temperatures, testing of these materials is recommended.