

SERIES 96

8,00mm Eurostyle® High Power (fixed) Blocks

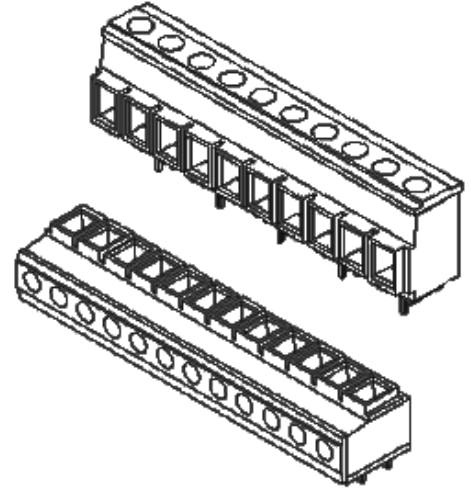
Description

These Eurostyle® terminal blocks are for permanent mounting to PC boards. Developed for AC Drive applications, they are optimized for maximum electrical conductivity and electrical voltage isolation. Their size is derived from the minimum line width and spacing for the electrical current capacity and isolation requirements of the associated PCB.

Made in the USA, all Eurostyle® terminal blocks embody the highest quality standards in the industry - using the finest materials and world class manufacturing processes. They meet or exceed all applicable industry standards.

Features

- **Specifically designed for high voltage,** wire insulation is completely shrouded by the deep wire funnel design to ensure no arcing between adjacent bare wires.
- **High temperature rating.** Our advanced polyamide polymer has a 130°C continuous service rating.
- **Holds wires for a secure, reliable contact.** The specially designed rising cage pressure clamp compresses wires uniformly. Serrations produce a high pressure, gas-tight interface.
- **Molded to length.** Unlike using many short lengths, they fit easily into PCB through-holes because there's no increase in pin-to-pin spacing.
- **High flammability rating.** 94V-0 is the highest available rating for the insulator - better than other leading brands.



PRODUCT RATINGS

UL	Class B	30 Amps @ 600V	10 AWG
	Class C	30 Amps @ 600 V	10 AWG
CSA		30 Amps @ 600 V	10 AWG
IEC 947-7-1		38 Amps @ 800 V	4,0mm ²

APPROVALS

UL	File No. E48521
	Guide No. XCFR2
CSA	File No. 025562

TECHNICAL SPECIFICATIONS

ELECTRICAL	
DWV	>6500 VDC
IR	>5000 Gigaohms
Contact resistance	<1 Milliohm initial

MECHANICAL	
Tightening torque	7 in.-lbs.
Wire strip length	9/32" or 7,14mm
Wire Range	10 to 22 AWG

ENVIRONMENTAL	
Continuous Use Temp	
RTI electrical	115°C
RTI mechanical w/o impact	130°C

MATERIALS

Insulator	Polyamide, UL94V-0, black
Pressure Clamp	Brass, nickle plate
Contacts	Copper alloy, bright tin dip
Screws	M3.5 Steel, zinc chromate plate

OPTIONS

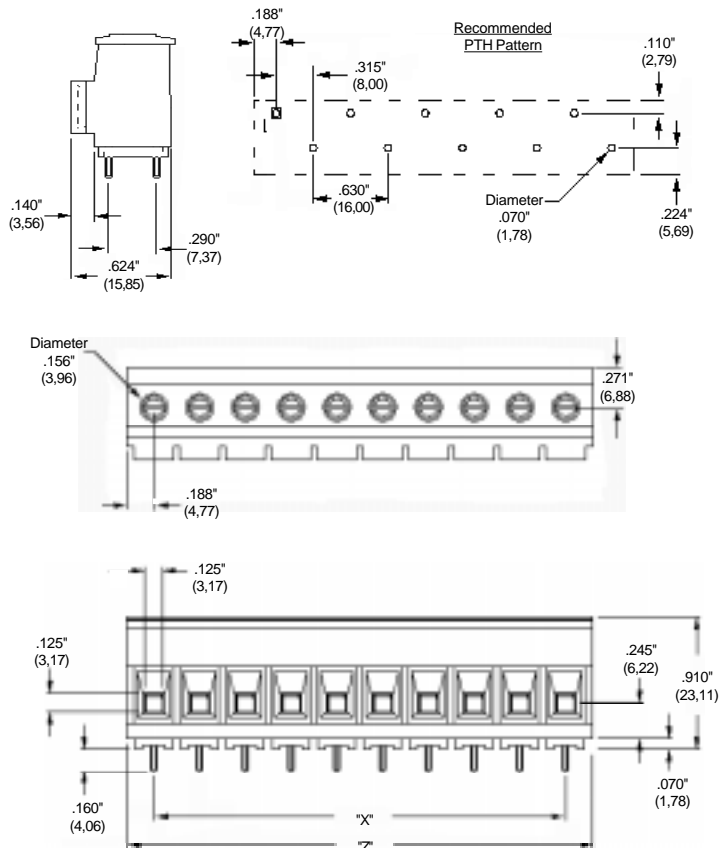
-10A	Sequential numbering
-49	Brass screws

HOW TO ORDER

9	6	X	X	X	X	-	X	X
SERIES		STYLE		NO. OF POLES		OPTIONS		
		05						
		08		3 to 14		(Dash#'s above)		

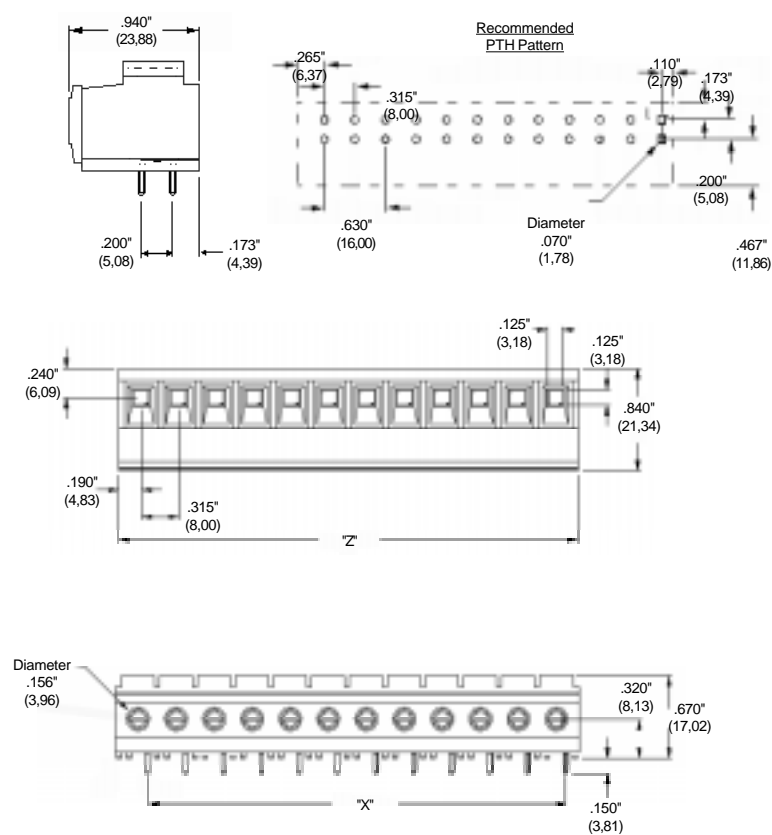
SERIES 96

Style 05



Part	X		Z	
Number	in	mm	in	mm
960503	.63	16,0	1.01	25,6
960504	.94	24,0	1.32	33,5
960505	1.26	32,0	1.64	41,6
960506	1.58	40,0	1.95	49,5
960507	1.89	48,0	2.27	57,6
960508	2.20	56,0	2.58	65,5
960509	2.52	64,0	2.90	73,6
960510	2.84	72,0	3.21	81,5
960511	3.15	80,0	3.53	89,6
960512	3.46	88,0	3.84	97,5
960513	3.78	96,0	4.16	105,6
960514	4.10	104,0	4.47	113,5

Style 08



Part	X		Z	
Number	in	mm	in	mm
960803	.63	16,0	1.01	25,6
960804	.94	24,0	1.32	33,5
960805	1.26	32,0	1.64	41,6
960806	1.58	40,0	1.95	49,5
960807	1.89	48,0	2.27	57,6
960808	2.20	56,0	2.58	65,5
960809	2.52	64,0	2.90	73,6
960810	2.84	72,0	3.21	81,5
960811	3.15	80,0	3.53	89,6
960812	3.46	88,0	3.84	97,5
960813	3.78	96,0	4.16	105,6
960814	4.10	104,0	4.47	113,5