

## SERIES 89

# 5,0mm Eurostyle® Single-piece (fixed) Blocks

### Description

These Eurostyle® terminal blocks are single-piece styles for permanent mounting to PC boards. They offer the superior reliability of rising cage pressure clamps for securing wires. The product features a closed-bottom design to prevent solder wicking.

Made in the USA, all Eurostyle® terminal blocks embody the highest quality standards in the industry - using the finest materials and world class manufacturing processes. They meet or exceed all applicable industry standards.

### Features

- **Holds wires for a secure, reliable contact.** The specially designed rising cage pressure clamp compresses wires uniformly. Serrations produce a high pressure, gas-tight interface. Built for repeated engagements, it doesn't damage stranded wires.
- **Molded to length.** Unlike using many short lengths, they fit easily into PCB through-holes because there's no increase in pin-to-pin spacing.
- **High flammability rating.** 94V-0 is the highest available rating for the insulator - better than other leading brands.
- **Small footprint.** It's .388-in width is smaller than most brands, saving PCB real estate.



### PRODUCT RATINGS

UL	Class B	20 Amps @ 300 V	12 AWG
	Class C	10 Amps @ 300 V	12 AWG
CSA		15 Amps @ 300 V	12 AWG
IEC 947-7-1		17.5 Amps @ 250V	2.5mm <sup>2</sup>

### APPROVALS

UL	File No. E48521
	Guide No. XCFR2
CSA	File No. 025562

### TECHNICAL SPECIFICATIONS

<b>ELECTRICAL</b>	
DWV	4500 VDC
IR	>5000 Megohms
Contact resistance	<10 Milliohms initial

<b>MECHANICAL</b>	
Tightening torque	5 in-lbs.
Wire strip length	1/4" or 6 mm
Wire Range	12 to 30 AWG

<b>ENVIRONMENTAL</b>	
Operating temp	-55° to +100° C

### MATERIALS

Insulator	Polyamide, UL94V-0, black
Pressure Clamp	Brass, nickle plate
Contacts	Phosphor bronze, hot tin dip
Screws	Steel, zinc chromate plate

### OPTIONS

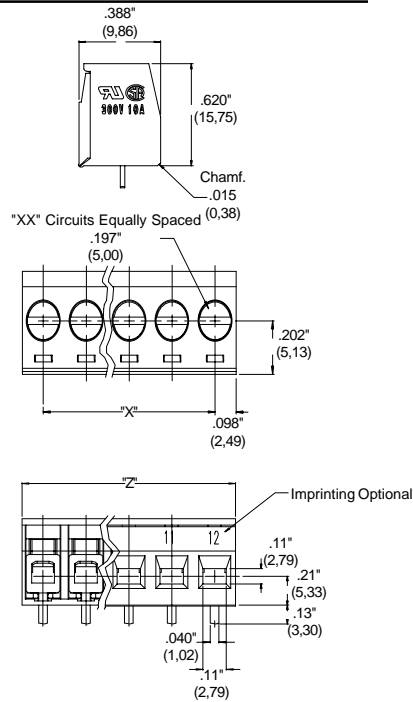
-10A	Sequential numbering
-49	Brass screws

### HOW TO ORDER

8	9	X	X	X	X	-	X	X
SERIES		STYLE		NO. OF POLES		OPTIONS		
		0508		2 to 24		(Dash#'s above)		

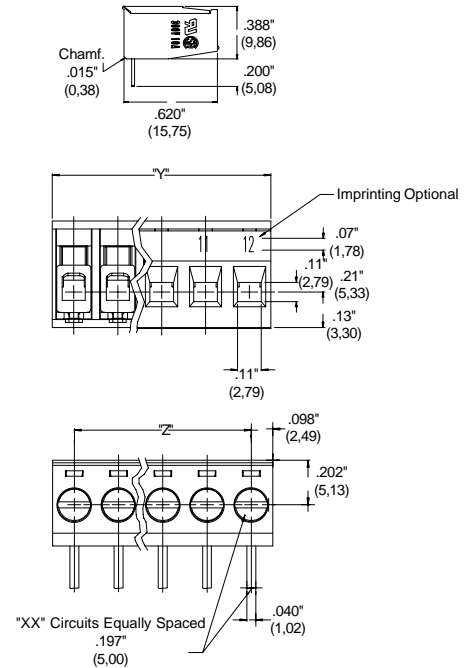
# SERIES 89

## Style 05



Part	X		Z	
Number	in	mm	in	mm
890502	.20	5,0	.39	10,0
890503	.39	10,0	.59	15,0
890504	.59	15,0	.79	20,0
890505	.79	20,0	.99	25,0
890506	.98	25,0	1.18	30,0
890507	1.18	30,0	1.38	35,0
890508	1.38	35,0	1.58	40,0
890509	1.58	40,0	1.77	45,0
890510	1.77	45,0	1.97	50,0
890511	1.97	50,0	2.17	55,0
890512	2.17	55,0	2.36	60,0
890513	2.36	60,0	2.56	65,0
890514	2.56	65,0	2.76	70,0
890515	2.76	70,0	2.95	75,0
890516	2.95	75,0	3.15	80,0
890517	3.15	80,0	3.35	85,0
890518	3.35	85,0	3.55	90,0
890519	3.55	90,0	3.74	95,0
890520	3.74	95,0	3.94	100,0
890521	3.94	100,0	4.14	105,0
890522	4.14	105,0	4.33	110,0
890523	4.33	110,0	4.53	115,0
890524	4.53	115,0	4.73	120,0

## Style 08



Part	X		Z	
Number	in	mm	in	mm
890802	.20	5,0	.39	10,0
890803	.39	10,0	.59	15,0
890804	.59	15,0	.79	20,0
890805	.79	20,0	.99	25,0
890806	.99	25,0	1.18	30,0
890807	1.18	30,0	1.38	35,0
890808	1.38	35,0	1.58	40,0
890809	1.58	40,0	1.77	45,0
890810	1.77	45,0	1.97	50,0
890811	1.97	50,0	2.17	55,0
890812	2.17	55,0	2.36	60,0
890813	2.36	60,0	2.56	65,0
890814	2.56	65,0	2.76	70,0
890815	2.76	70,0	2.95	75,0
890816	2.95	75,0	3.15	80,0
890817	3.15	80,0	3.35	85,0
890818	3.35	85,0	3.55	90,0
890819	3.55	90,0	3.74	95,0
890820	3.74	95,0	3.94	100,0
890821	3.94	100,0	4.14	105,0
890822	4.14	105,0	4.33	110,0
890823	4.33	110,0	4.53	115,0
890824	4.53	115,0	4.73	120,0