

## SERIES 83

# 3,5mm Eurostyle® Fixed PCB Terminal Block

### Description

The Eurostyle® series 83, rising cage pressure clamp terminal block features high pitch density, low profile and small footprint making the product useful in tight applications.

Our smallest terminal block, the series 83 has a dovetail construction, allowing several blocks to be assembled into a larger size.

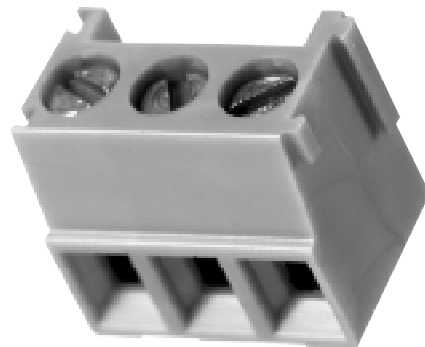
The product is pending UL recognition, CSA approval and is rated to VDE specifications.

All Beau terminal blocks embody the highest quality standards in the industry—using the finest materials and world class manufacturing processes. They meet or exceed all applicable industry standards.

### Features

- **High density, 3,5mm pitch screw terminal** allows for simple & reliable field termination in tight spaces.
- **Low profile, small footprint.** Our compact design is a mere .335" high and a scant .275" in depth
- **Modular, dove tail construction** allows 2 and 3 circuit terminal blocks to be assembled into virtually any length desired.

**Holds wires for a secure reliable contact.** The specially designed rising cage pressure clamp compresses wires uniformly. Serrations produce a high pressure, gas-tight interface. Built for repeated engagements, it doesn't damage stranded wires.



### PRODUCT RATINGS

UL	Class B	8 Amps @ 150 V	16 AWG
CSA		8 Amps @ 300 V	16 AWG
IEC 947-7-1		8 Amps @ 125 V	1,0mm <sup>2</sup>

### APPROVALS

UL	Pending
CSA	pending

### TECHNICAL SPECIFICATIONS

#### ELECTRICAL

DWV	2000 VDC
IR	>5000 Megohms
Contact resistance	<10 Milliohms initial

#### MECHANICAL

Tightening torque	2 in-lbs.
Maximum torque	3 in-lbs.
Wire strip length	.250" or 6mm
Wire Range	16 to 26 AWG

#### ENVIRONMENTAL

Operating temp	-55° to +85° C
----------------	----------------

### MATERIALS

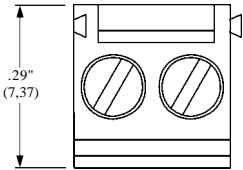
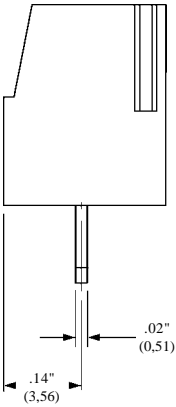
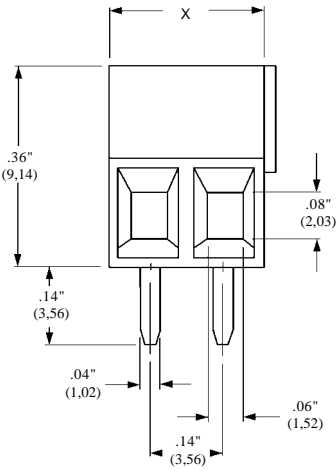
Insulator	Polyamide, UL94V-0, green
Terminal	Brass, tin plate
Clamp	Brass, nickle plate
Screws	Steel, zinc chromate plate

### OPTIONS

### HOW TO ORDER

8	3	X	X	X	X	-	X	X
SERIES	STYLE	NO. OF	OPTIONS					
	05	POLES						
		02 or 03					(Dash#'s	
							above)	

SERIES 83



Part	X	
Number	in	mm
830502	.275	7,0
830503	.413	10,5