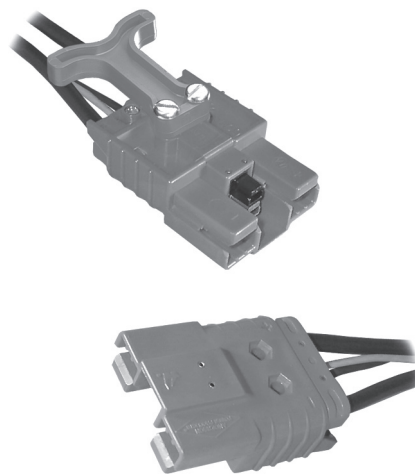


The SBO®60 connector is for hot-plug use at 60 amps. It contains recessed contacts and a ribbed nose housing, thus providing finger proofing in environments where human contact is a consideration. Available in different colors, this genderless connector is mechanically keyed to ensure connectors will only mate with connectors of the same color.

With the silver-plated copper contacts, there is a maximum connect/disconnect life of 10,000 cycles, with a 600 volts continuous AC or DC operation. Accessories, such as integral cable clamp and handle, provide strain relief and ease of use.

FEATURES

- Auxiliary contacts**
Provides additional poles up to 30 amps for auxiliary power, control or sensing
- Meets UL 1950 finger probe test**
Each half offers finger proofing and can be connected to two energized sources up to 600 volts AC/DC
- Handle**
Eases connector use and relieves unnecessary strain on cables when disconnecting



PRODUCT SPECIFICATIONS

Connector Model	SBO®60	Connector Model	SBO®60
Current rating (main contacts)	60	Insulation with standing test voltage (volts AC/DC)	2200
Largest wire size (AWG)	#6	Maximum wire insulation diameter (inches)	0.44
(mm ²)	16	(mm)	11.2
Maximum operating voltage AC/DC	600	Contact retention force (lbf)	50
Contact material	Silver plated copper	Life:	
Operating temperature range °C	-20° to 105°	a. No load (connect/disconnect cycles)	10,000
°F	-4° to 221°	b. Under load (hot plug 250 cycles @ 120V)	60A
Flammability rating of housing material	UL94 V-0		
AVG contact resistance* (microhoms)	200		



*UL rated for 65°C largest wire or cable size

ORDERING INFORMATION

Housing Only

Part Number	Housing Color
SBO60RED	Red
SBO60YEL	Yellow
SBO60ORN	Orange
SBO60WHT	White

Contacts

Part Number	Description	Wire AWG	sq. mm
1339G1	Contact set (2)	#6	16

Bushings

Part Number	Description	Wire AWG	sq. mm
5912	Use with 1339G1	#6 to #8	16/8.4
5910	Use with 1339G1	#6 to #10/12	16 to 5.3/3.3

Cable Clamp & Hardware

Part Number	Housing Color
SBO60CLPRED	Red

Handle/Hardware & Accessories

Part Number	Description
SBO60HDLRED	Red housing
6344	Auxiliary contact kit

Housing, Contacts, Handle, Clamp & Hardware

Part Number	Housing Color
SBO60RED16MMHDL	Red
SBO60YEL16MMHDL	Yellow
SBO60ORN16MMHDL	Orange
SBO60WHT16MMHDL	White

Tooling

Part Number	Description
1309G4	Hand tool
1387G1	Pneumatic tool
1388G6	- die for #6 AWG/16 mm
1389G9	- locator for #6 AWG/16 mm

Note: For additional colors please contact customer service

HEADQUARTERS: 13 Pratts Junction Road, Sterling, MA 01564-2305 USA T:978-422-3600 F:978-422-3700

EUROPE: Rathealy Road, Fermoy Co. Cork, Ireland T:353-(0)25-32277 F:353-(0)25-32296

ASIA/PACIFIC: IDEAL Anderson Asia Pacific Ltd., Unit 922-928 Topsail Plaza, 11 On Sum Street, Shatin N.T., Hong Kong T:852-2636-0836 F:852-2635-9036

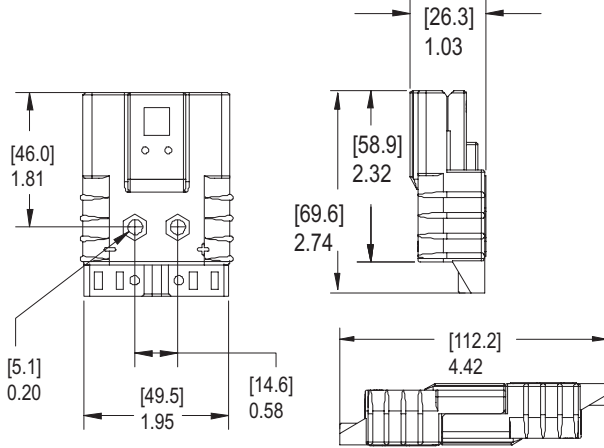
CHINA: IDEAL Anderson Technologies (Shenzhen) Ltd., Block A8 Tantou W. Ind. Par, Songgang Baoan District, Shenzhen, P.R. China 51810 T: 86-755-2768-2118 F: 86-755-2768-2218

TAIWAN: IDEAL Anderson Asia Pacific Ltd., Taiwan Branch, 4F-2, No.116, Dadun 20th St., Situn District, Taichung City 407, Taiwan (R.O.C.) T: 886-4-2310-6451 F:886-4-2310-6460

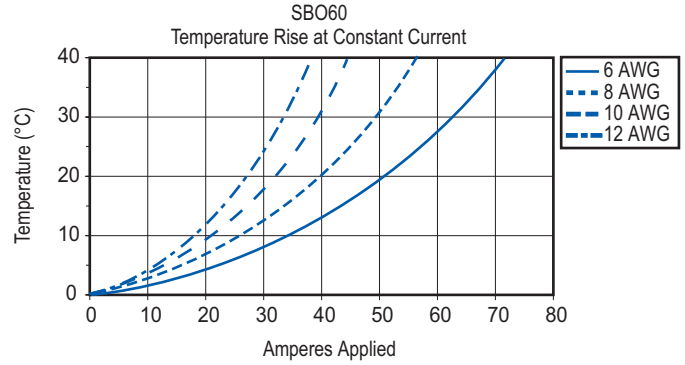
www.andersonpower.com

DIMENSIONS

Housing



TEMPERATURE RISE CHART



Contacts

