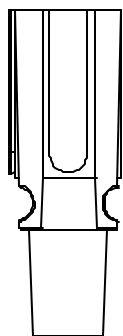


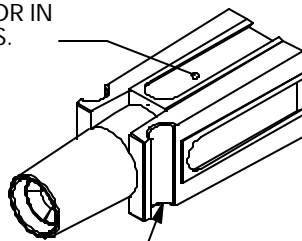
THE INFORMATION CONTAINED IN THIS DRAWING IS THE SOLE PROPERTY OF ANDERSON POWER PRODUCTS. ANY REPRODUCTION IN PART OR WHOLE WITHOUT THE WRITTEN PERMISSION OF ANDERSON POWER PRODUCTS IS PROHIBITED.

ANDERSON POWER PRODUCTS RESERVES THE RIGHT TO ALTER PRODUCT TYPES, THEIR TECHNICAL DATA, DIMENSION, STYLE AND ACCESSORIES WITHOUT PRIOR NOTIFICATION.

CRIMP BARREL VERSION

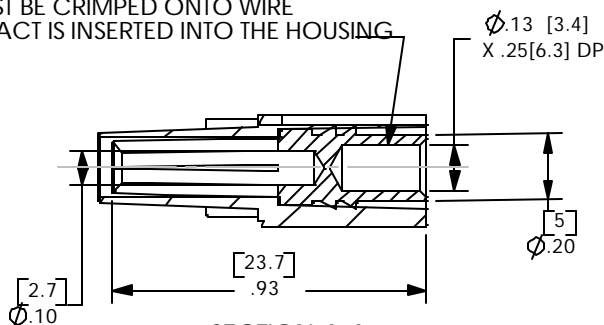
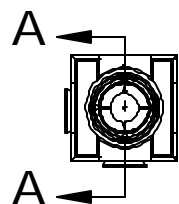


DOVETAILS ALLOW STACKING IN VERTICAL, HORIZONTAL, OR IN BLOCK CONFIGURATIONS.



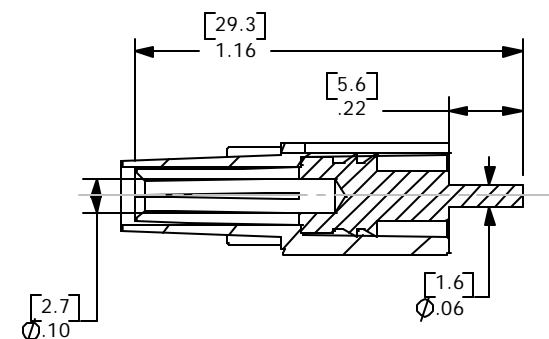
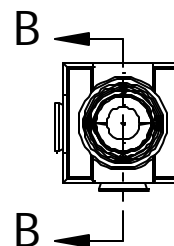
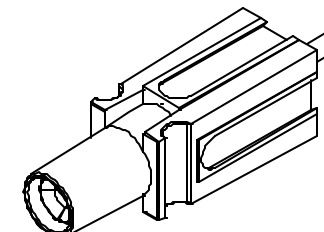
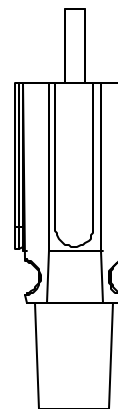
WHEN MATED SIDE TO SIDE, HALF-ROUNDS ALIGN TO FORM A SLOT FOR ROLL PIN INSERTION, WHICH PROTECTS AGAINST ACCIDENTAL DISLODGING OF MATED HOUSINGS.

① CONTACT MUST BE CRIMPED ONTO WIRE BEFORE CONTACT IS INSERTED INTO THE HOUSING



SECTION A-A

PCB TAIL VERSION



SECTION B-B

- NOTES:
1. HOUSING AND CONTACT ASSEMBLIES ARE UL RECOGNIZED PER E26226 AND CSA CERTIFIED PER LR251 54.
 2. THE SOCKET CONTACT ACCOMMODATES #10 AWG WIRE.
 3. MATERIAL:
HOUSINGS: POLYCARBONATE, UL94V0
SOCKET CONTACT: COPPER. (TIN OR SILVER PLATED)
 4. HOUSINGS AND CONTACTS ARE ALSO AVAILABLE SEPARATELY

ORDERING INFORMATION FOR CONTACT/HOUSING SETS

CAT NO.	TERM. STYLE	PLATING
PP30MF-S10T	CRIMP	TIN
PP30MF-S10S	CRIMP	SILVER
PP30MF-SPCT	PCB	TIN
PP30MF-SPCS	PCB	SILVER

3	ECRN 13484: ADD CAT. NO. TABLE	5/15/02	CMS
2	ECRN 13433	10/23/01	CMS
1	ECRN 13287: ADD CRIMP NOTE	1/13/00	CMS
REV	DESCRIPTION	DATE	APP

	ITEM NO.	PART OR IDENTIFYING NO.	NOMENCLATURE OR DESCRIPTION		MATERIAL SPECIFICATION	QTY REQD
PARTS LIST						
UNLESS OTHERWISE SPECIFIED:		CAD GENERATED DRAWING, DO NOT MANUALLY UPDATE		ANDERSON POWER PRODUCTS		
DIMENSIONS ARE IN INCHES DIMENSIONS IN [] ARE MM'S TOLERANCES ARE: 1 PLC. ±.4 2 PLC. ±.02		APPROVALS	DATE	POWERPOLE 30 GROUND SOCKET MAKE FIRST- BREAK LAST		
		DRAWN	CMS 1/25/99			
		CHECKED	DJD 1/26/99			
		RESP ENG	UFN 10/22/01			
MATERIAL	SEE NOTES	MFG ENG	CHB 10/21/01	SIZE A	DWG. NO. 113920S2	REV. 3
FINISH	SEE TABLE	QC	RPO 10/10/01	SCALE NONE	CAD FILE: 01127	SHEET 1 OF 1

ANDERSON POWER PRODUCTS

POWERPOLE 30 GROUND SOCKET
MAKE FIRST- BREAK LAST

SIZE A DWG. NO. 113920S2 REV. 3