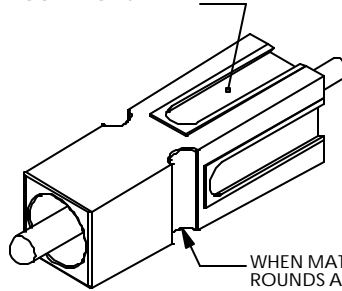
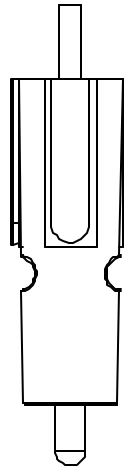


THE INFORMATION CONTAINED IN THIS DRAWING IS THE SOLE PROPERTY OF ANDERSON POWER PRODUCTS. ANY REPRODUCTION IN PART OR WHOLE WITHOUT THE WRITTEN PERMISSION OF ANDERSON POWER PRODUCTS IS PROHIBITED.

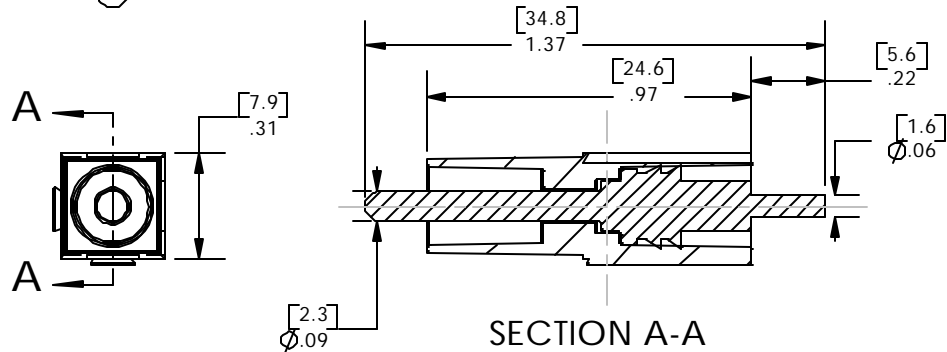
ANDERSON POWER PRODUCTS RESERVES THE RIGHT TO ALTER PRODUCT TYPES, THEIR TECHNICAL DATA, DIMENSION, STYLE AND ACCESSORIES WITHOUT PRIOR NOTIFICATION.

PCB TAIL STYLE

DOVETAILS ALLOW STACKING IN VERTICAL, HORIZONTAL, OR IN BLOCK CONFIGURATIONS.

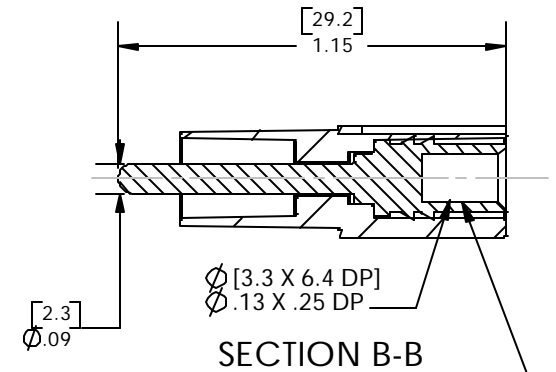
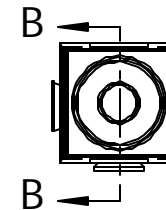
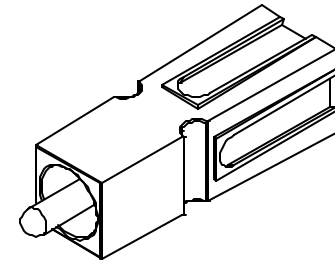
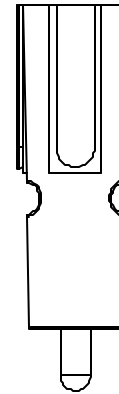


WHEN MATED SIDE TO SIDE, HALF-ROUNDS ALIGN TO FORM A SLOT FOR ROLL PIN INSERTION, WHICH PROTECTS AGAINST ACCIDENTAL DISLODGING OF MATED HOUSINGS.



SECTION A-A

CRIMP BARREL STYLE



SECTION B-B

NOTE: CONTACT MUST BE CRIMPED ONTO WIRE BEFORE CONTACT IS INSERTED INTO THE HOUSING

- NOTES: ①
- HOUSING AND CONTACT ASSEMBLIES ARE UL RECOGNIZED PER E26226 AND CSA CERTIFIED PER LR251 54.
 - THE PIN CONTACT ACCOMMODATES #10 AWG WIRE.
 - MATERIAL:
HOUSINGS: POLYCARBONATE, UL94-V0
PIN CONTACT: COPPER (TIN OR SILVER PLATED)

ORDERING INFORMATION FOR CONTACT/HOUSING SETS

CAT NO.	TERM. STYLE	PLATING
PP30MF-P10T	CRIMP	TIN
PP30MF-P10S	CRIMP	SILVER
PP30MF-PPCT	PCB	TIN
PP30MF-PPCS	PCB	SILVER

3	ECRN 13484: ADD CAT. NO. TABLE	5/16/02	CMS
2	ECRN 13433	10/23/01	CMS
1	ECRN 13287: CRIMP NOTE	1/13/00	CMS
REV	DESCRIPTION	DATE	APP.

ITEM NO.	PART OR IDENTIFYING NO.	NOMENCLATURE OR DESCRIPTION	MATERIAL SPECIFICATION	QTY REQD
PARTS LIST				
UNLESS OTHERWISE SPECIFIED:		CAD GENERATED DRAWING, DO NOT MANUALLY UPDATE		
DIMENSIONS ARE IN INCHES WITH MM'S IN () TOLERANCES ARE: 1 PL $\pm .4$ 2 PL $\pm .02$		APPROVALS	DATE	ANDERSON POWER PRODUCTS POWERPOLE 30 AMP GROUND PIN MAKE-FIRST, BREAK LAST
MATERIAL SEE NOTES		DRAWN CMS	1/25/99	
		CHECKED DJD	1/26/99	
		RESP ENG UFN	10/22/01	
FINISH --		MFG ENG CHB	10/21/01	SIZE A DWG. NO. 113919S2 REV. 3
DO NOT SCALE DRAWING		QC RPO	10/10/01	
		SCALE 2:1	CAD FILE: 01126	SHEET 1 OF 1