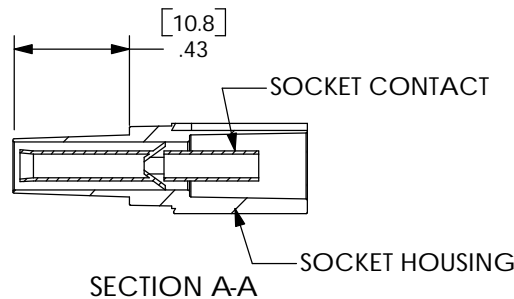
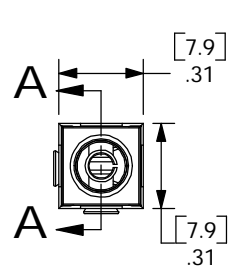
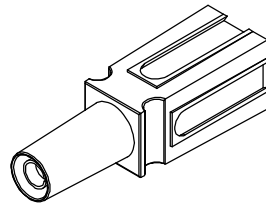
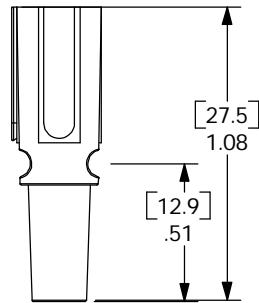
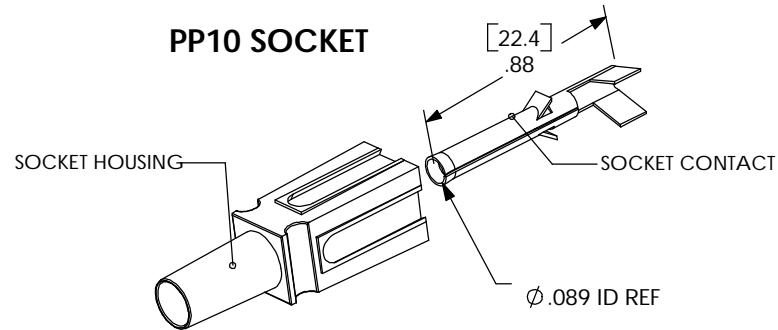


THE INFORMATION CONTAINED IN THIS DRAWING IS THE SOLE PROPERTY OF ANDERSON POWER PRODUCTS. ANY REPRODUCTION IN PART OR WHOLE WITHOUT THE WRITTEN PERMISSION OF ANDERSON POWER PRODUCTS IS PROHIBITED.

## PP10 SOCKET



NOTES:  
1. HOUSING AND CONTACT ASSEMBLIES ARE UL RECOGNIZED PER E2226 AND CSA CERTIFIED PER LR251 54.

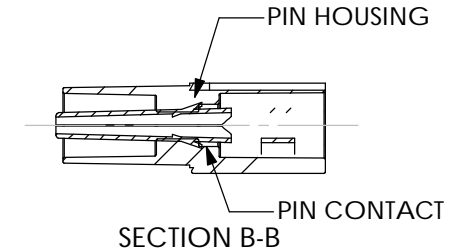
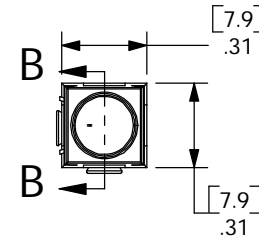
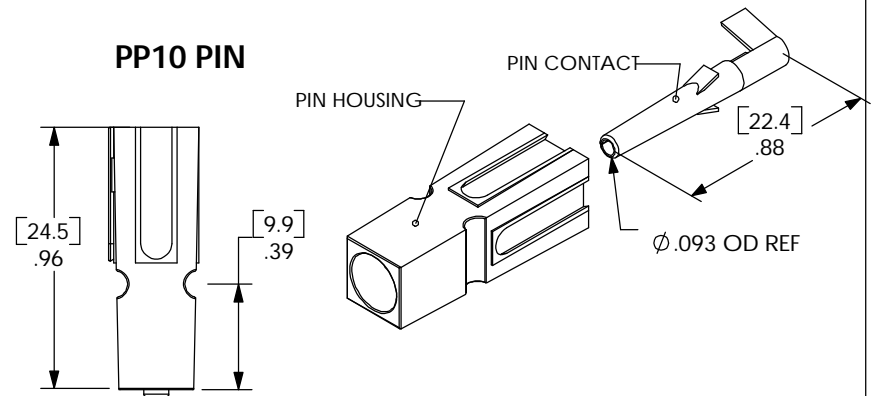
2. MATERIAL:  
CONTACTS- BRASS- TIN PLATED  
HOUSINGS- POLYCARBONATE, UL94V0

3. CONTACTS ACCOMMODATE 14/16 AWG WIRE

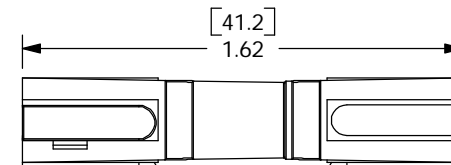
1	ECRN 13433	10/23/01	CMS
REV	DESCRIPTION	DATE	APP.

ANDERSON POWER PRODUCTS RESERVES THE RIGHT TO ALTER PRODUCT TYPES, THEIR TECHNICAL DATA, DIMENSION, STYLE AND ACCESSORIES WITHOUT PRIOR NOTIFICATION.

## PP10 PIN



## MATED CONNECTORS



ITEM NO.	PART OR IDENTIFYING NO.	NOMENCLATURE OR DESCRIPTION	MATERIAL SPECIFICATION	QTY REQD
PARTS LIST				
UNLESS OTHERWISE SPECIFIED:		CAD GENERATED DRAWING, DO NOT MANUALLY UPDATE		<b>ANDERSON POWER PRODUCTS</b>  <b>POWERPOLE 10 PIN AND SOCKET</b>  SIZE <b>A</b> DWG. NO. <b>114199S1</b> REV <b>1</b>
DIMENSIONS ARE IN INCHES WITH MM'S IN [ ], TOLERANCES ARE: 1 PL ±.4 2 PL ±.02		APPROVALS	DATE	
DRAWN		CMS	1/25/99	
CHECKED		DJD	1/26/99	
MATERIAL		RESP ENG	UFN	
FINISH		MFG ENG	CHB	SCALE <b>A</b> CAD FILE: <b>01128</b> SHEET 1 OF 1
DO NOT SCALE DRAWING		OC	RPO	