

8

7

6

5

4

3

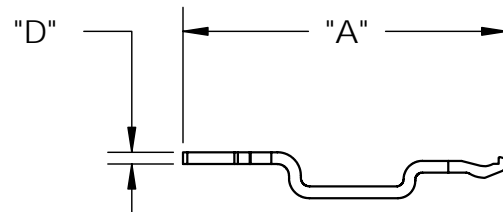
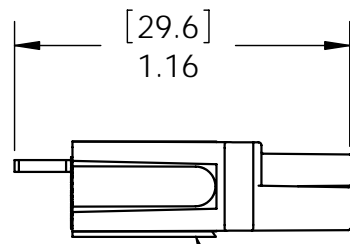
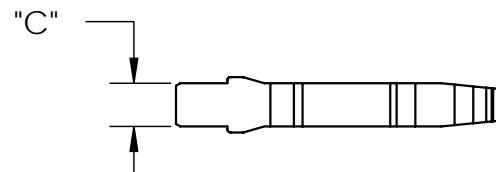
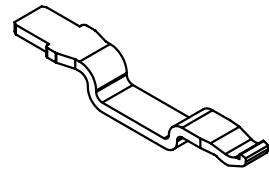
2

1

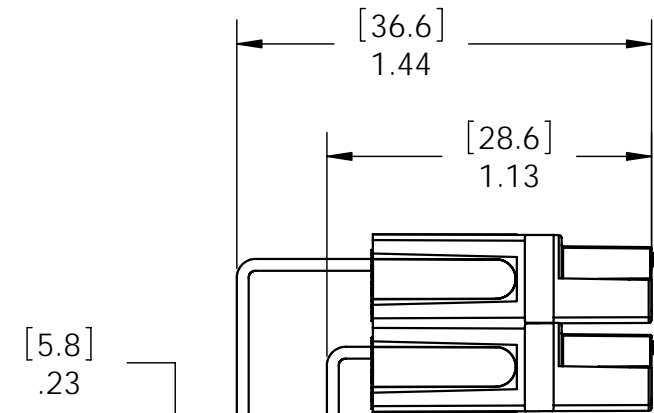
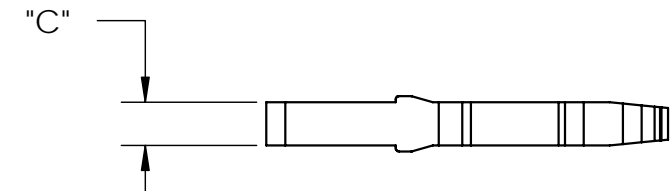
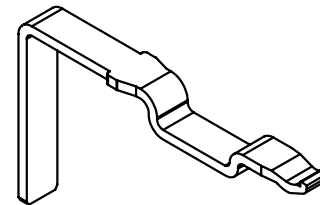
THE INFORMATION CONTAINED IN THIS DRAWING IS THE SOLE PROPERTY OF ANDERSON POWER PRODUCTS. ANY REPRODUCTION IN PART OR WHOLE WITHOUT THE WRITTEN PERMISSION OF ANDERSON POWER PRODUCTS IS PROHIBITED.

Copyright 2007

ANDERSON POWER PRODUCTS RESERVES THE RIGHT TO ALTER PRODUCT TYPES, THEIR TECHNICAL DATA, DIMENSION, STYLE AND ACCESSORIES WITHOUT PRIOR NOTIFICATION.



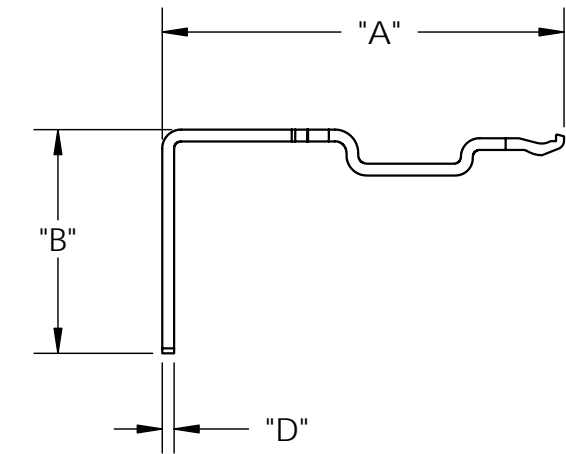
PP15/45 HOUSINGS (1327 SERIES)



PP15/45 HOUSINGS (1327 SERIES)

RIGHT ANGLE CONTACT HORIZONTAL (BOTTOM) CAT. NO. 1336G1

RIGHT ANGLE CONTACT HORIZONTAL (TOP) CAT. NO. 1337G1



NOTES:

- 1. FOR USE WITH 1327 SERIES HOUSINGS (SOLD SEPARATELY)
- 2. SEE DATA SHEET FOR PCB LAYOUTS AND MOUNTING ACCESSORIES

PART NUMBER	DESCRIPTION	"A"		"B"		"C"		"D"	
		INCH	[MM]	INCH	[MM]	INCH	[MM]	INCH	[MM]
1335G1	HP PCB, STRAIGHT	1.12	28.5	N/A		0.15	3.8	0.04	1.0
1336G1	HP PCB, RIGHT-ANGLE, BOTTOM	1.08	27.5	0.47	11.9	0.15	3.8	0.04	1.0
1337G1	HP PCB, RIGHT-ANGLE, TOP	1.40	35.4	0.78	19.7	0.15	3.8	0.04	1.0

DIMENSIONS ARE IN:	INCH[MM]	APPROVALS		 ANDERSON POWER PRODUCTS TITLE HIGH POWER PCB SERIES 45 AMP PCB CONTACTS SALES OUTLINE DRAWING			
UNLESS OTHERWISE STATED		DRAWN	AMS 04/09/07				
TOLERANCES:		CHECKED	DJD 04/09/07				
DECIMALS (INCH) .XX ± .02		MFG APP	CHB 04/10/07				
DECIMALS (MM) .X ± .5		QC APP	UFN 04/11/07				
ANGLES ±2°		ENG APP	DAM 04/11/07				
SURFACE FINISH:		SIZE	B/A3	DWG NO.	B02021S2	REV.	0
MACHINED 128 [3.2] ✓		SCALE	NONE	CADFILE	02665	SHEET	1 OF 1
MOLDED 64 [1.6] ✓		-CAD GENERATED DRAWING- DO NOT MANUALLY UPDATE DO NOT SCALE					
MATERIAL: COPPER ALLOY		3rd ANGLE PROJECTION					
FINISH: TIN PLATE							

REV.	DESCRIPTION OF CHANGES	APPROVED	DATE
*	*****	***	*****

8

7

6

5

4

3

2

1