

THE INFORMATION CONTAINED IN THIS DRAWING IS THE SOLE PROPERTY OF ANDERSON POWER PRODUCTS. ANY REPRODUCTION IN PART OR WHOLE WITHOUT THE WRITTEN PERMISSION OF ANDERSON POWER PRODUCTS IS PROHIBITED.

ANDERSON POWER PRODUCTS RESERVES THE RIGHT TO ALTER PRODUCT TYPES, THEIR TECHNICAL DATA, DIMENSION, STYLE AND ACCESSORIES WITHOUT PRIOR NOTIFICATION.

REV.	DESCRIPTION OF CHANGES	BY:	DATE
1	ECRN 13367 - CORRECTED ID DATA IN TABLE	CMS	12/23/01
2	ECRN 13371 - 45 WAS .47	DJD	3/17/01
3	ECRN 13507	CMS	8/2/02
4	ECRN 13533	CMS	11/21/02

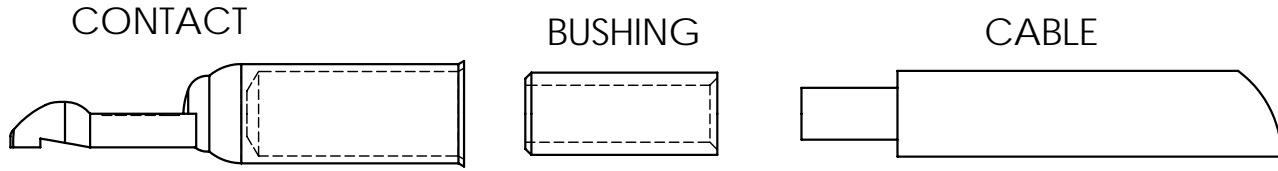
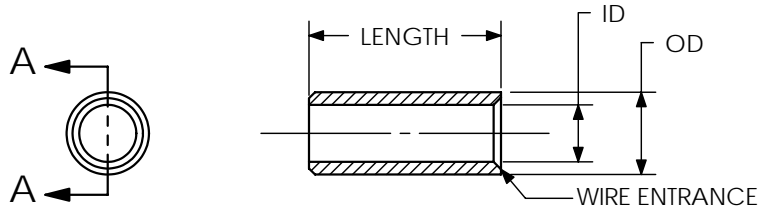
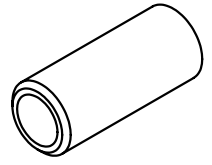
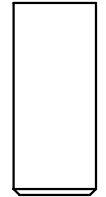


TABLE OF AVAILABLE REDUCING BUSHINGS

CATALOG NUMBER	CONNECTOR SERIES	FOR USE WITH CONTACT	WIRE RANGE (AWG)	ID		OD		LENGTH	
				IN	MM	IN	MM	IN	MM
5910	PP75/SB50	5900 OR 1307	#10/12	.14	3.6	.21	5.3	.47	11.9
5912	PP75/SB50	5900 OR 1307	#6/8	.18	4.6	.21	5.3	.45	11.9
5913	PP75/SB50	5900 OR 1307	#14/16	.09	2.3	.21	5.3	.47	11.9
5919	PP120/SB120	1319	#4	.28	7.1	.33	8.4	.84	21.3
5920	PP120/SB120	1319	#6/16MM	.23	5.8	.33	8.4	.84	21.3
5921	PP120/SB120	1319	#8	.18	4.6	.33	8.4	.84	21.3
5648	PP180/SB175 SBE160/SBX175	1382 OR 6384G1	#10	.19	4.8	.43	10.9	1.00	25.4
5663	PP180/SB175 SBE160/SBX175	1382 OR 6384G1	#6	.22	5.8	.43	10.9	1.00	25.4
5687	PP180/SB175 SBE160/SBX175	1382 OR 6384G1	#1	.39		.43	10.9	1.00	25.4
5690	PP180/SB175 SBE160/SBX175	1382 OR 6384G1	#2	.34	8.6	.43	10.9	1.00	25.4
5693	PP180/SB175 SBE160/SBX175	1382 OR 6384G1	#4	.27	7.6	.43	10.9	1.00	25.4
5918	SB350/SBE320 SBX350	907 OR 6354	1/0	.44	11.2	.48	12.2	1.10	28.0
5954	SBE700	6170G1	4/0	.65	16.5	.89	22.6	2.00	50.8

- ①
- ②
- ③



SECTION A-A

NOTES:

REDUCING BUSHING SHOULD BE INSERTED INTO THE CRIMP BARREL OF THE CONTACT PRIOR TO CRIMPING

ITEM NO.	PART OR IDENTIFYING NO.	NOMENCLATURE OR DESCRIPTION	MATERIAL SPECIFICATION	QTY REQD
COPYRIGHT 1999 ANDERSON POWER PRODUCTS. ALL RIGHTS RESERVED. UNAUTHORIZED REPRODUCTION HEREBY PROHIBITED.				
DIMENSIONS ARE IN INCHES DIMENSIONS IN PARENTHESES [ ] ARE IN MILLIMETERS		CAD GENERATED DRAWING, DO NOT MANUALLY UPDATE		<b>ANDERSON POWER PRODUCTS</b>  <b>REDUCING BUSHINGS FOR PP AND SB/SBE/SBX</b>  SIZE <b>A</b> SPECIFICATION: <b>114204S1</b> REV. <b>4</b>
TOLERANCES ARE: 2PL- ±.02 [±.5]		APPROVALS	DATE	
MATERIALS: COPPER		DRAWN	CMS 10/26/99	
FINISH SILVER PLATE		CHECKED	DJD 10/27/99	
NEXT ASSY USED ON		RESP ENG	UFN 10/28/99	
APPLICATION		MFG ENG	CHB 11/1/99	SCALE NONE
DO NOT SCALE DRAWING		QUAL ENG	RPO 11/1/99	CADFILES/01133
			SHEET 1 OF 1	