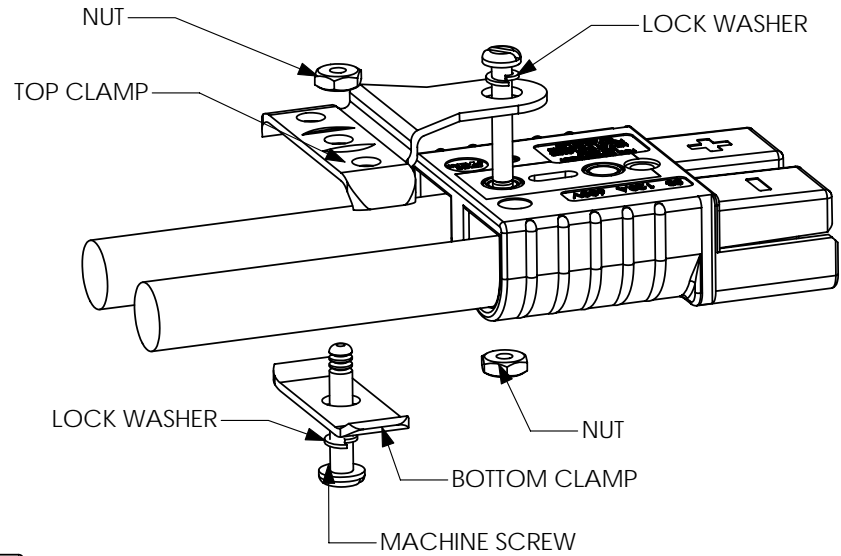
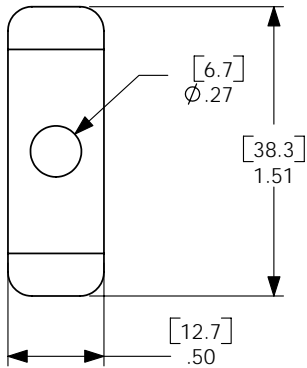
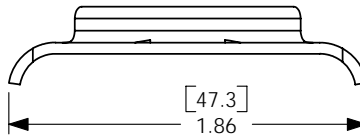
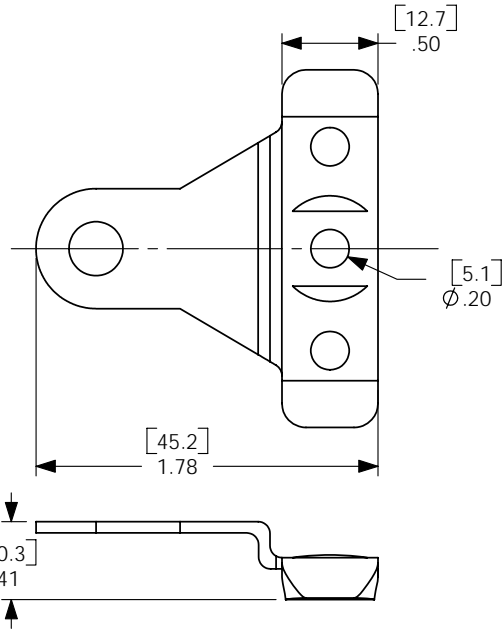


THE INFORMATION CONTAINED IN THIS DRAWING IS THE SOLE PROPERTY OF ANDERSON POWER PRODUCTS. ANY REPRODUCTION IN PART OR WHOLE WITHOUT THE WRITTEN PERMISSION OF ANDERSON POWER PRODUCTS IS PROHIBITED.

DATE	CMS 4/26/06
BY:	CMS
DESCRIPTION OF CHANGES	ECRN 13998
REV.	1



NOTES:

1. MATERIAL- COLD ROLLED STEEL; ZINC PLATE- YELLOW
2. HARDWARE KIT INCLUDES-TWO MACHINE SCREWS, TWO NUTS TWO LOCK WASHERS

ITEM NO.	PART OR IDENTIFYING NO.	NOMENCLATURE OR DESCRIPTION	MATERIAL SPECIFICATION	QTY RECD
COPYRIGHT 2002 ANDERSON POWER PRODUCTS. ALL RIGHTS RESERVED. UNAUTHORIZED REPRODUCTION HEREBY PROHIBITED.				
DIMENSIONS ARE IN INCHES DIMENSIONS IN PARENTHESES [] ARE IN MILLIMETERS		CAD GENERATED DRAWING, DO NOT MANUALLY UPDATE		
TOLERANCES ARE: 2PL- ±.02 [±.5]		APPROVALS DATE		
MATERIALS: SEE NOTES		DRAWN CMS 11/15/02		
FINISH SEE NOTES		CHECKED DJD 11/18/02		
NEXT ASSY USED ON		RESP ENG MAW 11/18/02		
APPLICATION		MFG ENG DAM 11/18/02		
DO NOT SCALE DRAWING		QUAL ENG RPO 11/18/02		
		ANDERSON POWER PRODUCTS		
		CATALOG NUMBER 981G1 SB120 CABLE CLAMP FOR TWO SINGLE CONDUCTOR CABLES		
		SIZE A	SPECIFICATION: 114414S1	REV. 1
		SCALE NONE	CADFILES/01672	SHEET 1 OF 1