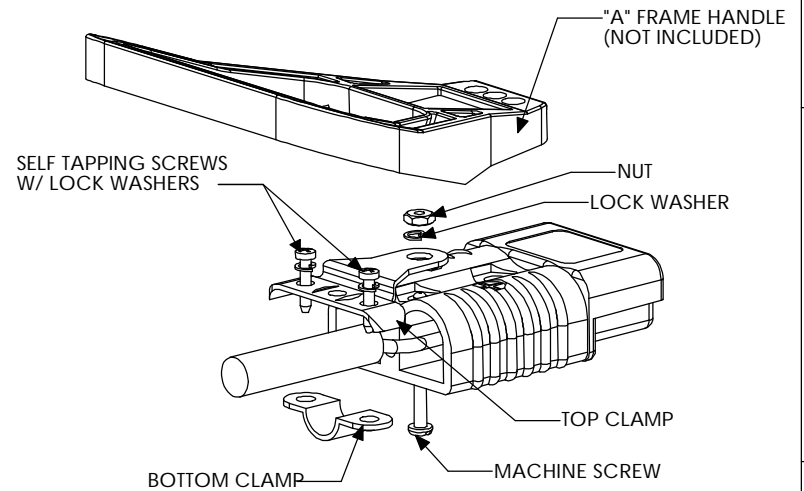
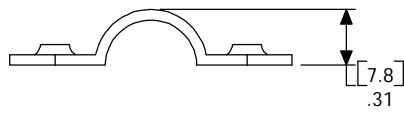
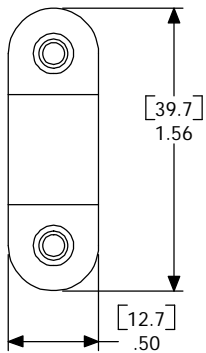
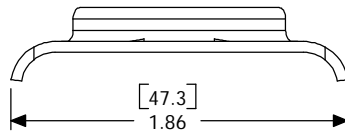
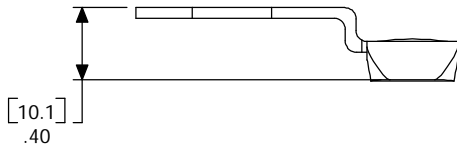
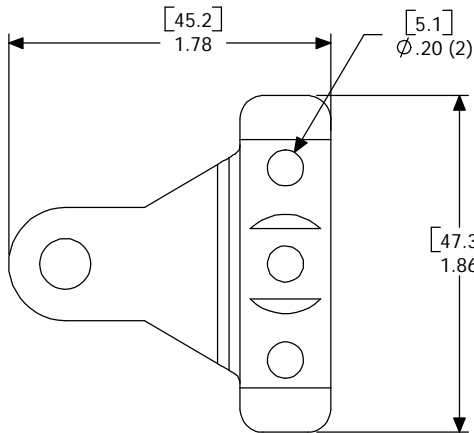


THE INFORMATION CONTAINED IN THIS DRAWING IS THE SOLE PROPERTY OF ANDERSON POWER PRODUCTS. ANY REPRODUCTION IN PART OR WHOLE WITHOUT THE WRITTEN PERMISSION OF ANDERSON POWER PRODUCTS IS PROHIBITED.

DATE	
BY:	
DESCRIPTION OF CHANGES	
REV.	



NOTES:

1. MATERIAL- COLD ROLLED STEEL; ZINC PLATE- YELLOW
2. HARDWARE KIT INCLUDES-TWO SELF TAPPING SCREWS ONE MACHINE SCREW, ONE NUT, AND THREE LOCK WASHERS
3. CONNECTOR AND "A" FRAME HANDLE SOLD SEPARATELY

ITEM NO.	PART OR IDENTIFYING NO.	NOMENCLATURE OR DESCRIPTION	MATERIAL SPECIFICATION	QTY RECD
COPYRIGHT 2000 ANDERSON POWER PRODUCTS. ALL RIGHTS RESERVED. UNAUTHORIZED REPRODUCTION HEREBY PROHIBITED				
DIMENSIONS ARE IN INCHES DIMENSIONS IN PARENTHESES [] ARE IN MILLIMETERS		CAD GENERATED DRAWING, DO NOT MANUALLY UPDATE		ANDERSON POWER PRODUCTS
TOLERANCES ARE: 2PL- ±.02 [±.5]		APPROVALS	DATE	
MATERIALS: SEE NOTES		DRAWN	CMS 2/8/00	CATALOG NUMBER 946G1 SB175 CABLE CLAMP FOR TWIN CONDUCTOR CABLE FOR USE WITH "A" FRAME HANDLE
FINISH SEE NOTES		CHECKED	DJD 2/9/00	
NEXT ASSY		USED ON	RESP ENG	
APPLICATION		DO NOT SCALE DRAWING	MFG ENG	CHB 2/9/00
			QUAL ENG	RPO 2/10/00
			SCALE	NONE
			CADFILES/01188	SHEET 1 OF 1

A

A