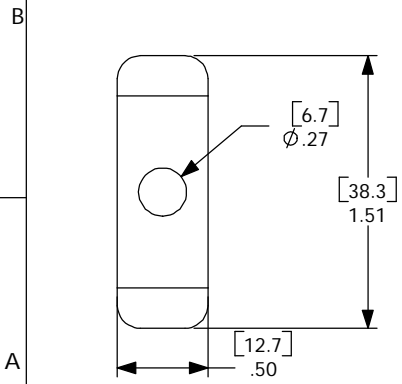
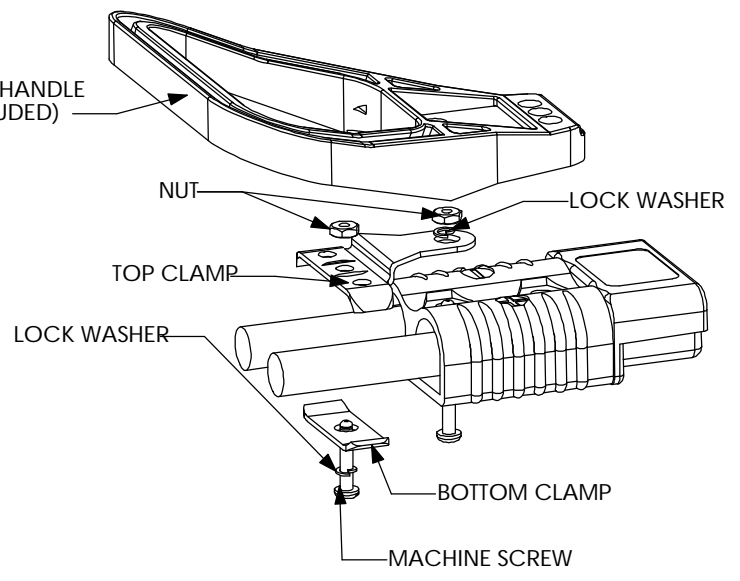
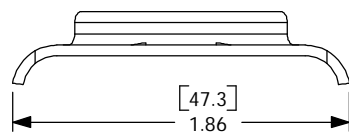
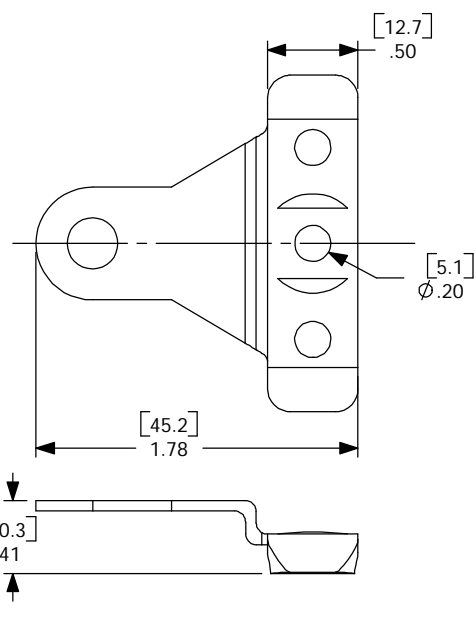


THE INFORMATION CONTAINED IN THIS DRAWING IS THE SOLE PROPERTY OF ANDERSON POWER PRODUCTS. ANY REPRODUCTION IN PART OR WHOLE WITHOUT THE WRITTEN PERMISSION OF ANDERSON POWER PRODUCTS IS PROHIBITED.

DATE	
BY:	
DESCRIPTION OF CHANGES	
REV.	



NOTES:

1. MATERIAL- COLD ROLLED STEEL; ZINC PLATE- YELLOW
2. HARDWARE KIT INCLUDES-TWO MACHINE SCREWS, TWO NUTS TWO LOCK WASHERS
3. CONNECTOR AND "A" FRAME HANDLE SOLD SEPARATELY

ITEM NO.	PART OR IDENTIFYING NO.	NOMENCLATURE OR DESCRIPTION	MATERIAL SPECIFICATION	QTY REQD
COPYRIGHT 2000 ANDERSON POWER PRODUCTS. ALL RIGHTS RESERVED. UNAUTHORIZED REPRODUCTION HEREBY PROHIBITED				
DIMENSIONS ARE IN INCHES DIMENSIONS IN PARENTHESES [] ARE IN MILLIMETERS		CAD GENERATED DRAWING. DO NOT MANUALLY UPDATE	ANDERSON POWER PRODUCTS	
TOLERANCES ARE: 2PL- ±.02 [±.5]		APPROVALS		
MATERIALS: SEE NOTES		DRAWN	CMS	2/8/00
FINISH SEE NOTES		CHECKED	DJD	2/8/00
NEXT ASSY		RESP ENG	UFN	2/9/00
USED ON		MFG ENG	CHB	2/9/00
APPLICATION		QUAL ENG	RPO	2/10/00
DO NOT SCALE DRAWING		SCALE	NONE	
			CADFILES/01187	
			SHEET 1 OF 1	

CATALOG NUMBER 945G3
SB175 CABLE CLAMP FOR TWO
SINGLE CONDUCTOR CABLES
FOR USE WITH "A" FRAME HANDLE

SIZE SPECIFICATION: **114229S1** REV. **0**