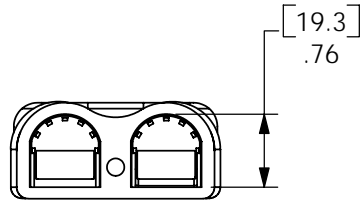
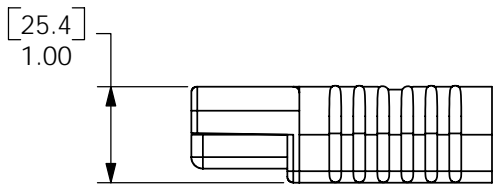
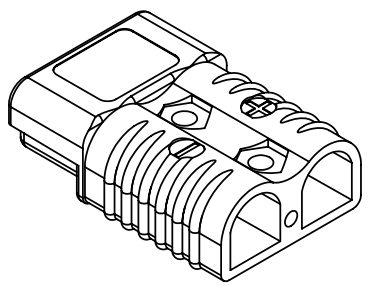
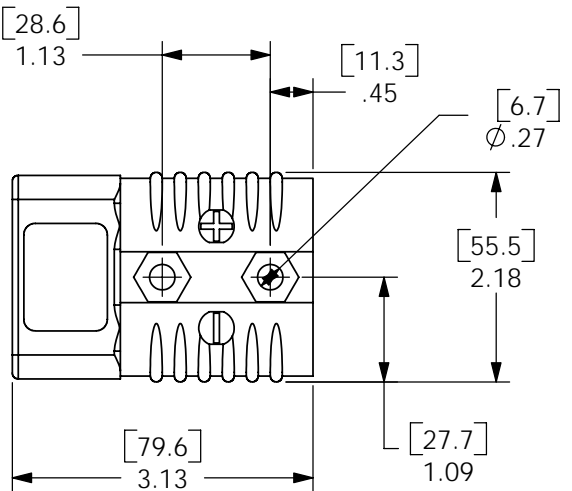
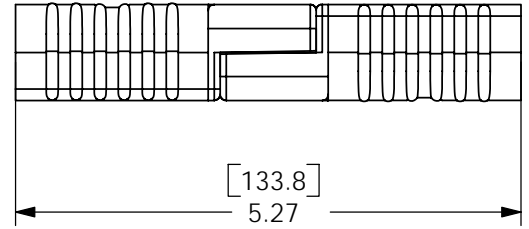


THE INFORMATION CONTAINED IN THIS DRAWING IS THE SOLE PROPERTY OF ANDERSON POWER PRODUCTS. ANY REPRODUCTION IN PART OR WHOLE WITHOUT THE WRITTEN PERMISSION OF ANDERSON POWER PRODUCTS IS PROHIBITED.

REV.	DESCRIPTION OF CHANGES	BY:	DATE
1	ECRN 14037 - ADD TABLE OF CAT. NUMBERS	AMS	7/13/06



MATED PAIR



VOLTAGE KEY	CAT. NO.
GRAY	940
BLUE	941
ORANGE	942
YELLOW	943
RED	949
**BLACK "KEYLESS"	2-7252G11
BROWN	950

NOTES:

1. SPRING/HOUSING ASSEMBLIES ARE UL RECOGNIZED PER FILE E26226, CSA CERTIFIED PER LR25154
2. HOUSINGS ARE KEYS TO ONLY ALLOW MATING WITH THE SAME COLOR HOUSING.
3. FOR ASSEMBLY INSTRUCTIONS SEE DOCUMENT 1S1030A
4. HOUSING ASSEMBLIES ACCOMMODATE ANDERSON CONTACTS FOR WIRE RANGE FROM #10 AWG TO 1/0.
5. MATERIAL:  
HOUSINGS-POLYCARBONATE, UL94V0  
SPRING- STAINLESS STEEL
6. \*\*BLACK "KEYLESS" CONNECTOR WILL MATE WITH ALL VOLTAGE KEYS AND COLORS

ITEM NO.	PART OR IDENTIFYING NO.	NOMENCLATURE OR DESCRIPTION	MATERIAL SPECIFICATION	QTY RECD
COPYRIGHT 1999 ANDERSON POWER PRODUCTS. ALL RIGHTS RESERVED. UNAUTHORIZED REPRODUCTION HEREBY PROHIBITED.				
DIMENSIONS ARE IN INCHES DIMENSIONS IN PARENTHESES [ ] ARE IN MILLIMETERS		CAD GENERATED DRAWING, DO NOT MANUALLY UPDATE	ANDERSON POWER PRODUCTS	
TOLERANCES ARE: 2PL- ±.02 [±.5]		APPROVALS	DATE	
MATERIALS: SEE NOTES		DRAWN	CMS 3/18/99	
FINISH		CHECKED	DJD 3/19/99	
NEXT ASSY		RESP ENG	UFN 4/19/99	
USED ON		MFG ENG	CHB 4/20/99	
APPLICATION		QUAL ENG	DJM 4/20/99	
DO NOT SCALE DRAWING		SIZE A	SPECIFICATION: 114131S1	
		SCALE	-	
		FILE:	J:/ENGDSN/CADFILES/01001	
		SHEET	1 OF 1	
		REV.	1	