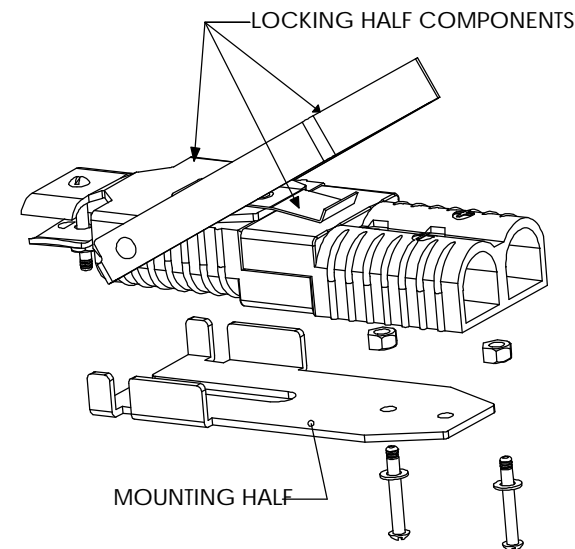
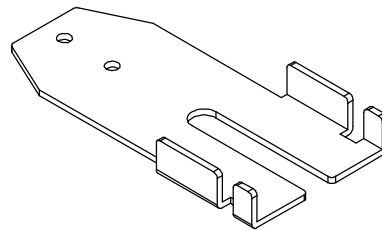
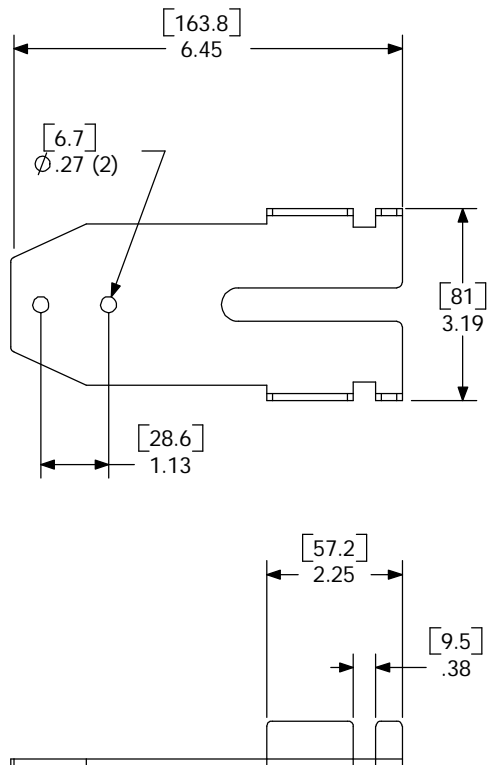


THE INFORMATION CONTAINED IN THIS DRAWING IS THE SOLE PROPERTY OF ANDERSON POWER PRODUCTS. ANY REPRODUCTION IN PART OR WHOLE WITHOUT THE WRITTEN PERMISSION OF ANDERSON POWER PRODUCTS IS PROHIBITED.

C		D	
REV.	DESCRIPTION OF CHANGES	BY:	DATE



## COMPONENTS FOR MOUNTING HALF-SB350 MANUAL RELEASE

COMPONENT	QTY
MOUNTING HALF	1
SCREWS	2
WASHERS	2
NUTS	2

NOTES:

1. MATERIAL  
#11 GA (.120) HOT ROLLED STEEL PICKLED AND OILED  
ELECTROSTATIC POWDER COAT EPOXY- CRIMSON RED
2. USE WITH EITHER CATALOG NUMBER 919 (LOCKING HALF W/ CLAMP)  
OR 919G1 (LOCKING HALF WITHOUT CLAMP)

		TOLERANCES ARE: 2PL: ±.02 [±.5]		DRAWN CMS 10/15/99		CATALOG #922G1 SB350 MANUAL RELEASE MOUNTING HALF HARDWARE FOR TRUCK OR CHARGER				
		MATERIALS:  SEE NOTES		CHECKED DJD 10/27/99						
				RESP ENG UFN 10/28/99						
MP			FINISH  SEE NOTES		MFG ENG CHB 11/1/99		SIZE A	SPECIFICATION:  114200S1		REV 0
	NEXT ASSY	USED ON								
APPLICATION		DO NOT SCALE DRAWING				QUAL ENG RPO 11/1/99		SCALE NONE	CADFILES/01129	SHEET 1 OF 1