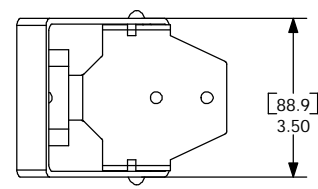


8 7 6 5 4 3 2 1

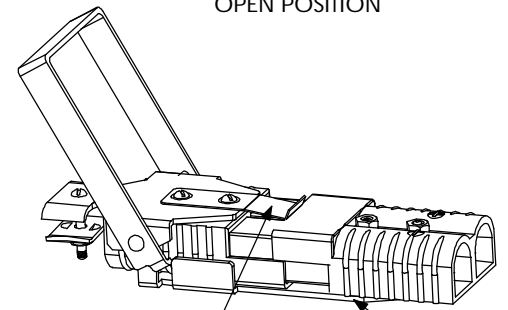
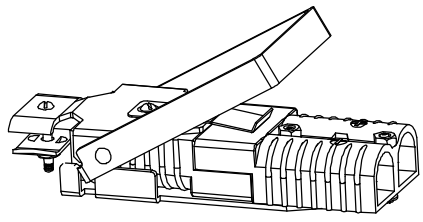
THE INFORMATION CONTAINED IN THIS DRAWING IS THE SOLE PROPERTY OF ANDERSON POWER PRODUCTS. ANY REPRODUCTION IN PART OR WHOLE WITHOUT THE WRITTEN PERMISSION OF ANDERSON POWER PRODUCTS IS PROHIBITED.

D
BY: DATE
C
REV. DESCRIPTION OF CHANGES



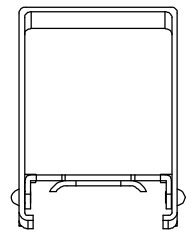
CLOSED POSITION

OPEN POSITION



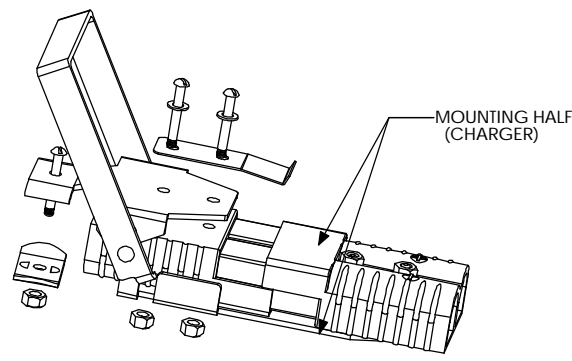
LOCK-OUT SPRING PREVENTS UNINTENTIONAL CONNECTION

MOUNTING HALF (TRUCK OR CHARGER)



SHOULDER RIVET (2)

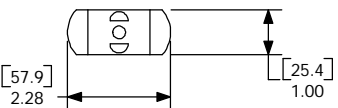
CABLE CLAMP



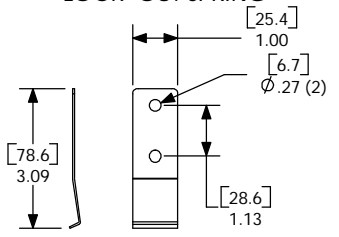
MOUNTING HALF (CHARGER)

COMPONENTS FOR SB350 MANUAL RELEASE LOCKING HALF WITH INTEGRAL CABLE CLAMP

COMPONENT	QTY
LOCKING HALF PLATE	1
HANDLE	1
LOCK-OUT SPRING	1
CABLE CLAMP	1
SCREWS	3
WASHERS	3
NUTS	3



LOCK-OUT SPRING



- NOTES
- MATERIALS:
PLATE AND HANDLE- #11 GA (.120") HOT ROLLED STEEL, PICKLED AND OILED
CABLE CLAMP- COLD ROLLED STEEL .083", #4 TEMPER
 - FINISH- ELECTROSTATIC POWDER COAT EPOXY- CRIMSON
 - USE WITH CATALOG NUMBER 922G1 (MOUNTING HALF)
 - CONNECTOR SOLD SEPARATELY

B

A

D

C

B

A

ITEM NO.	PART OR IDENTIFYING NO.	NOMENCLATURE OR DESCRIPTION	MATERIAL SPECIFICATION	QTY REQD
COPYRIGHT 1999 ANDERSON POWER PRODUCTS. ALL RIGHTS RESERVED. UNAUTHORIZED REPRODUCTION HEREBY PROHIBITED.				
DIMENSIONS ARE IN INCHES DIMENSIONS IN PARENTHESES [] ARE IN MILLIMETERS		CAD GENERATED DRAWING. DO NOT MANUALLY UPDATE		ANDERSON POWER PRODUCTS CATALOG NUMBER 919 SB350 MANUAL RELEASE LOCKING HALF HARDWARE WITH CABLE CLAMP
TOLERANCES ARE: 2PL- ±.02 [±.5]		APPROVALS	DATE	
MATERIALS: SEE NOTES		DRAWN	CMS 10/15/99	
FINISH: SEE NOTES		CHECKED	DJD 10/27/99	
NEXT ASSY USED ON		RESP ENG	UFN 10/28/99	SIZE A
APPLICATION		MFG ENG	CHB 11/1/99	SPECIFICATION: 114200S2
DO NOT SCALE DRAWING		QUAL ENG	RPO 11/1/99	SCALE NONE
			CADFILES/01130	REV. 0
				SHEET 1 OF 1

8 7 6 5 4 3 2 1