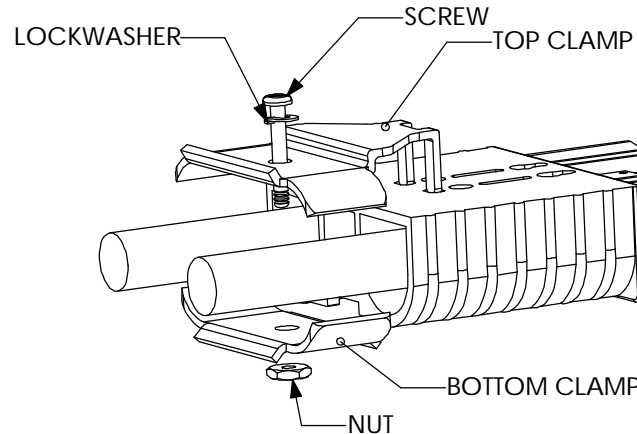
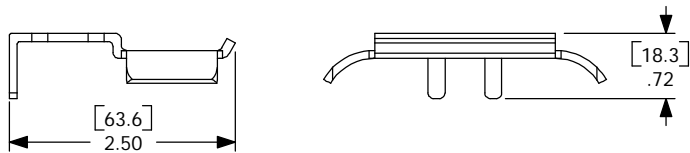
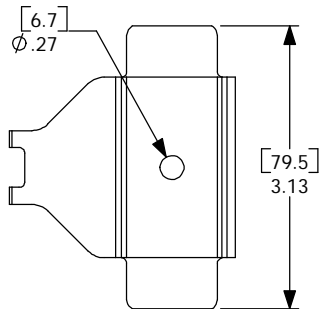
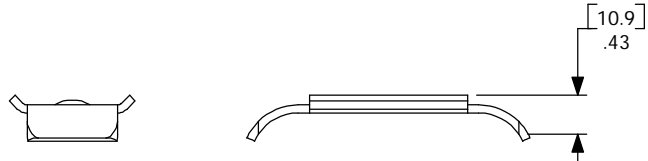
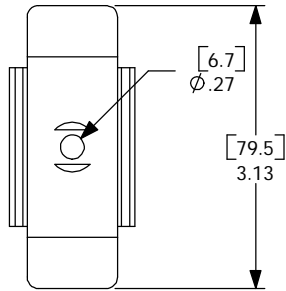


THE INFORMATION CONTAINED IN THIS DRAWING IS THE SOLE PROPERTY OF ANDERSON POWER PRODUCTS. ANY REPRODUCTION IN PART OR WHOLE WITHOUT THE WRITTEN PERMISSION OF ANDERSON POWER PRODUCTS IS PROHIBITED.

DATE	
BY:	
DESCRIPTION OF CHANGES	
REV.	



EXPLODED VIEW OF CLAMP- BOTTOM SIDE

NOTES:

1. MATERIAL- COLD ROLLED STEEL, .089" THK; ZINC PLATE- YELLOW
2. HARDWARE KIT INCLUDES-ONE MACHINE SCREW, ONE NUT ONE LOCK WASHER
3. CLAMP CAN BE USED IN CONJUNCTION WITH EITHER THE "A" FRAME HANDLE (995G2) OR THE MANUAL RELEASE BRACKETS (993G1 OR 994G1)
4. CONNECTOR SOLD SEPARATELY

ITEM NO.	PART OR IDENTIFYING NO.	NOMENCLATURE OR DESCRIPTION	MATERIAL SPECIFICATION	QTY REQD
COPYRIGHT 2000 ANDERSON POWER PRODUCTS. ALL RIGHTS RESERVED. UNAUTHORIZED REPRODUCTION HEREBY PROHIBITED.				
DIMENSIONS ARE IN INCHES DIMENSIONS IN PARENTHESES [] ARE IN MILLIMETERS		CAD GENERATED DRAWING, DO NOT MANUALLY UPDATE		ANDERSON POWER PRODUCTS
TOLERANCES ARE: 2PL- ±.02 [±.5]		APPROVALS	DATE	
MATERIALS: SEE NOTES		DRAWN	CMS 4/24/00	CATALOG NUMBER 911G2 CABLE CLAMP FOR SBE320/SBX350
FINISH SEE NOTES		CHECKED	DJD 5/8/00	
NEXT ASSY USED ON		RESP ENG	UFN 5/15/00	
APPLICATION		MFG ENG	CHB 5/10/00	
DO NOT SCALE DRAWING		QUAL ENG	RPO 5/5/00	REV. 0
		SCALE	NONE	CADFILES/01215
				SHEET 1 OF 1

8 | 7 | 6 | 5 | 4 | 3 | 2 | 1

D

D

C

C

B

B

A

A

8 | 7 | 6 | 5 | 4 | 3 | 2 | 1