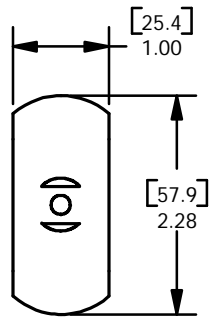
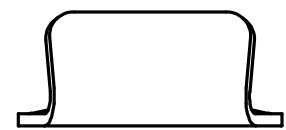
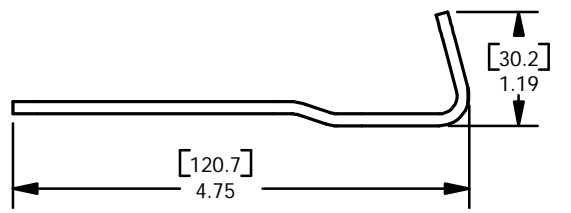
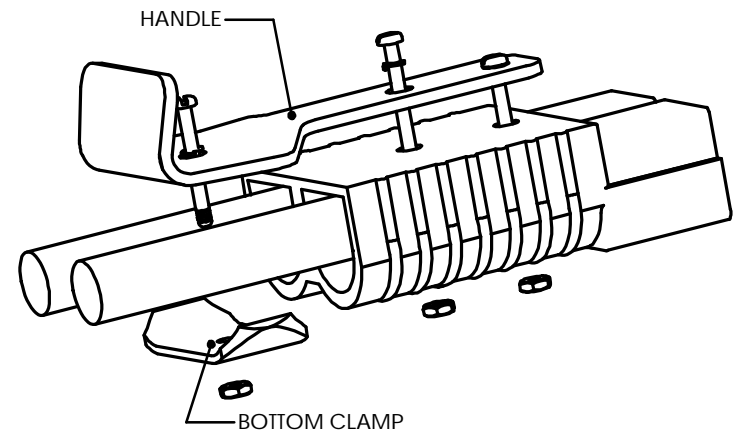
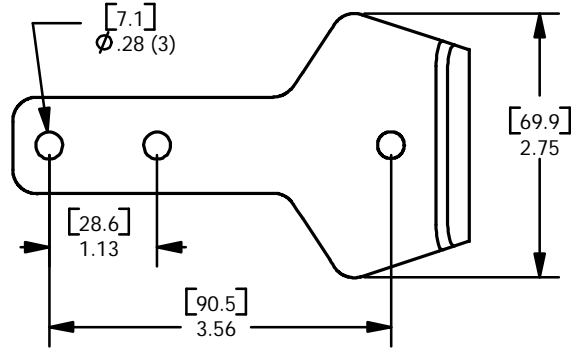


THE INFORMATION CONTAINED IN THIS DRAWING IS THE SOLE PROPERTY OF ANDERSON POWER PRODUCTS. ANY REPRODUCTION IN PART OR WHOLE WITHOUT THE WRITTEN PERMISSION OF ANDERSON POWER PRODUCTS IS PROHIBITED.

ANDERSON POWER PRODUCTS RESERVES THE RIGHT TO ALTER PRODUCT TYPES, THEIR TECHNICAL DATA, DIMENSION, STYLE AND ACCESSORIES WITHOUT PRIOR NOTIFICATION.

| | |
|------------------------|------|
| BY: | DATE |
| ** | ** |
| DESCRIPTION OF CHANGES | |
| ** | ** |
| REV. | ** |



NOTES:

1. MATERIAL:
HANDLE- HOT ROLLED STEEL
BOTTOM CLAMP- COLD ROLLED STEEL
2. HARDWARE KIT INCLUDES-THREE MACHINE SCREWS,
THREE NUTS, AND THREE LOCK WASHERS
3. CONNECTOR SOLD SEPARATELY

| ITEM NO. | PART OR IDENTIFYING NO. | NOMENCLATURE OR DESCRIPTION | MATERIAL SPECIFICATION | QTY REQD |
|---|-------------------------|--|-------------------------|--------------|
| COPYRIGHT 2002 ANDERSON POWER PRODUCTS. ALL RIGHTS RESERVED. UNAUTHORIZED REPRODUCTION HEREBY PROHIBITED. | | | | |
| DIMENSIONS ARE IN INCHES DIMENSIONS IN PARENTHESES [] ARE IN MILLIMETERS | | CAD GENERATED DRAWING, DO NOT MANUALLY UPDATE | | |
| TOLERANCES ARE: 2PL- ±.02 [±.5] | | APPROVALS DATE | | |
| MATERIALS: SEE NOTES | | DRAWN CMS 6/20/02 | | |
| FINISH ZINC, CLEAR CHROMATE | | CHECKED DJD 6/24/02 | | |
| DO NOT SCALE DRAWING | | RESP ENG WJM 6/25/02 | | |
| NEXT ASSY | USED ON | MFG ENG DAM 6/25/02 | SPECIFICATION: 114232S1 | |
| APPLICATION | | QUAL ENG RPO 6/25/02 | SCALE NONE | REV. 0 |
| | | | CADFILES/01194 | SHEET 1 OF 1 |

ANDERSON POWER PRODUCTS

CATALOG NUMBER 911
SB350 HANDLE AND CLAMP

SIZE A SPECIFICATION: 114232S1

SCALE NONE CADFILES/01194 SHEET 1 OF 1