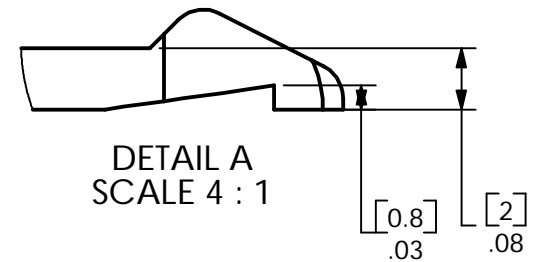
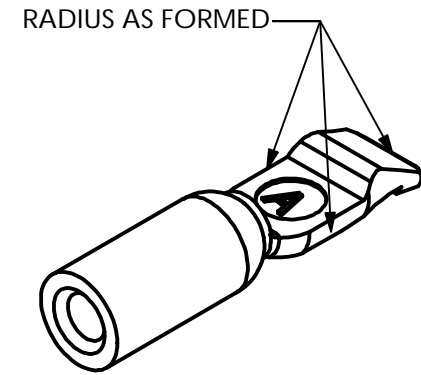
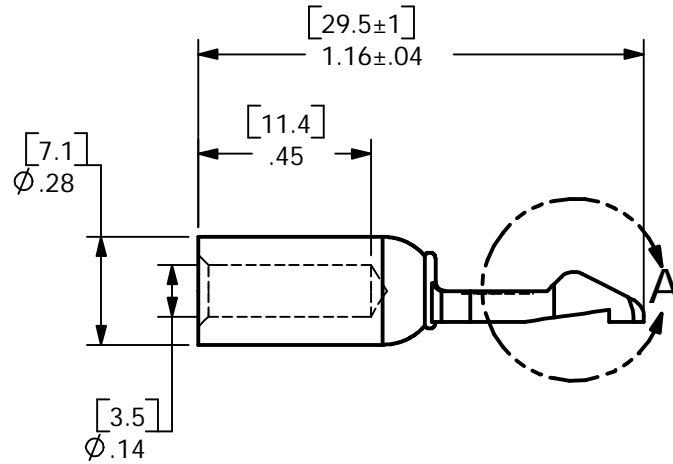
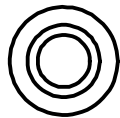
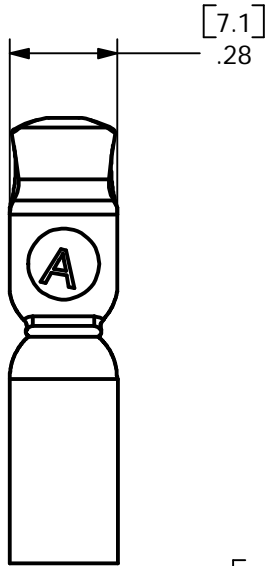


THE INFORMATION CONTAINED IN THIS DRAWING IS THE SOLE PROPERTY OF ANDERSON POWER PRODUCTS. ANY REPRODUCTION IN PART OR WHOLE WITHOUT THE WRITTEN PERMISSION OF ANDERSON POWER PRODUCTS IS PROHIBITED.

DATE	6/15/99
BY:	CMS
DESCRIPTION OF CHANGES	ECRN 13213: REDRAWN
REV.	5



ITEM NO.	PART OR IDENTIFYING NO.	NOMENCLATURE OR DESCRIPTION	MATERIAL SPECIFICATION	QTY REQD
COPYRIGHT 1999 ANDERSON POWER PRODUCTS. ALL RIGHTS RESERVED. UNAUTHORIZED REPRODUCTION HEREBY PROHIBITED.				
DIMENSIONS ARE IN INCHES DIMENSIONS IN PARENTHESES [ ] ARE IN MILLIMETERS		CAD GENERATED DRAWING, DO NOT MANUALLY UPDATE	ANDERSON POWER PRODUCTS	
TOLERANCES ARE: 2PL- ±.02 [±.5]		APPROVALS	DATE	<b>CATALOG NUMBER 5915</b> <b>PP75/ SB50 CONTACT</b> <b>#10 AWG CABLE MAX.</b> <b>HIGH DETENT</b>
MATERIALS: <b>COPPER</b>		DRAWN	JM 2/27/92	
FINISH: <b>SILVER PLATE</b>		CHECKED	DD 3/2/92	
NEXT ASSY USED ON		RESP ENG	CHB 3/2/92	
APPLICATION	DO NOT SCALE DRAWING	MFG ENG	JR 3/2/92	SIZE A SPECIFICATION: <b>1C0608S5</b> REV. <b>5</b>
		QUAL ENG	HN 3/2/92	SCALE NONE CADFILES/01050 SHEET 1 OF 1

8 | 7 | 6 | 5 | 4 | 3 | 2 | 1

D  
C  
B  
A