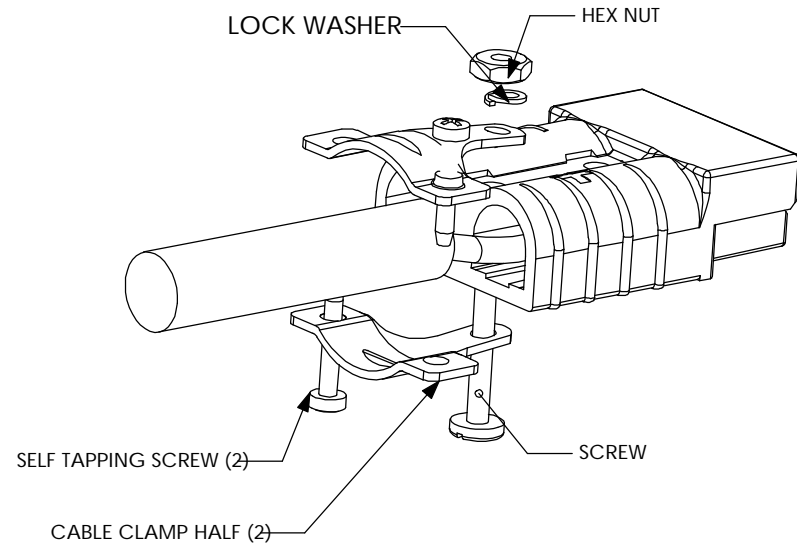
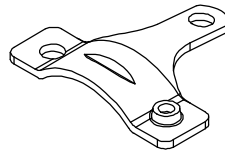
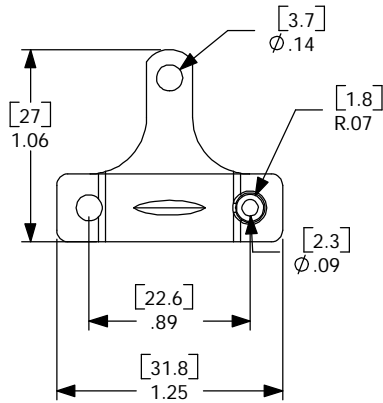


THE INFORMATION CONTAINED IN THIS DRAWING IS THE SOLE PROPERTY OF ANDERSON POWER PRODUCTS. ANY REPRODUCTION IN PART OR WHOLE WITHOUT THE WRITTEN PERMISSION OF ANDERSON POWER PRODUCTS IS PROHIBITED.

DATE	
BY:	
DESCRIPTION OF CHANGES	
REV.	



NOTES:

1. MATERIAL: STEEL, ZINC/YELLOW PLATE
2. HARDWARE KIT INCLUDES TWO SELF-TAPPING SCREWS, ONE LOCK WASHER, ONE SCREW AND ONE NUT
3. USE WITH TWIN CONDUCTOR CABLE

ITEM NO.	PART OR IDENTIFYING NO.	NOMENCLATURE OR DESCRIPTION		MATERIAL SPECIFICATION	QTY REQD	
COPYRIGHT2000 ANDERSON POWER PRODUCTS. ALL RIGHTS RESERVED. UNAUTHORIZED REPRODUCTION HEREBY PROHIBITED						
DIMENSIONS ARE IN INCHES DIMENSIONS IN PARENTHESES [] ARE IN MILLIMETERS		CAD GENERATED DRAWING, DO NOT MANUALLY UPDATE		ANDERSON POWER PRODUCTS		
		APPROVALS	DATE			
TOLERANCES ARE: 2PL- ±.02 [±.5]	MATERIALS: SEE NOTES	DRAWN	CMS 1/26/00	CATALOG NUMBER 5905 SB50 TWIN CONDUCTOR CABLE CLAMP		
		CHECKED	DJD 1/27/00			
		RESP ENG	UFN 2/7/00			
		MFG ENG	CHB 2/7/00			
FINISH	SEE NOTES	QUAL ENG	RPO 2/8/00	SIZE A	SPECIFICATION: 114219S1	REV: 0
DO NOT SCALE DRAWING				SCALE NONE	CADFILES/01176	SHEET 1 OF 1