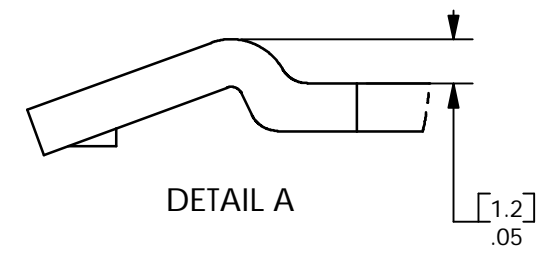
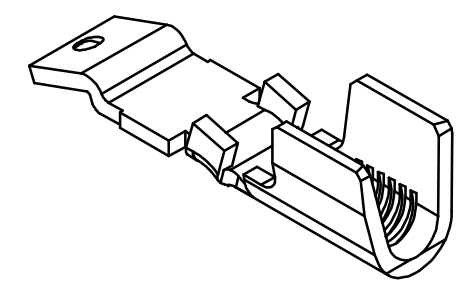
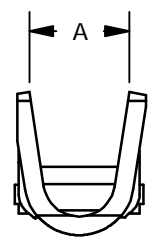
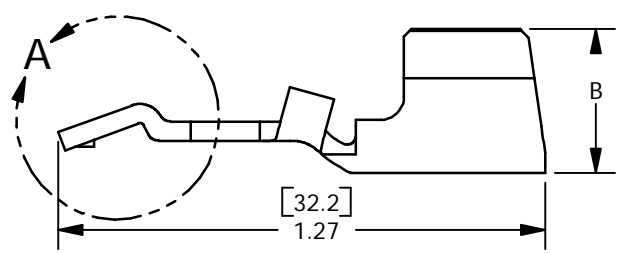
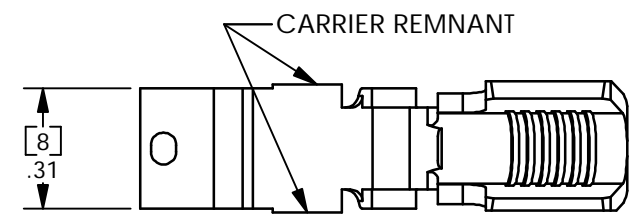


8 7 6 5 4 3 2 1

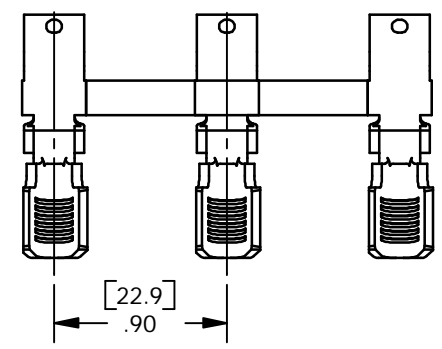
THE INFORMATION CONTAINED IN THIS DRAWING IS THE SOLE PROPERTY OF ANDERSON POWER PRODUCTS. ANY REPRODUCTION IN PART OR WHOLE WITHOUT THE WRITTEN PERMISSION OF ANDERSON POWER PRODUCTS IS PROHIBITED.

ANDERSON POWER PRODUCTS RESERVES THE RIGHT TO ALTER PRODUCT TYPES, THEIR TECHNICAL DATA, DIMENSION, STYLE AND ACCESSORIES WITHOUT PRIOR NOTIFICATION.

DATE	**
BY:	**
DESCRIPTION OF CHANGES	**
REV.	**



DETAIL A



TERMINAL STRIP

PART NO.	WIRE SIZE	A		B		PLATING
		IN	mm	IN	mm	
265G1	#6/8	.26	6.6	.36	9.1	SILVER
265G2	#10/12	.17	4.3	.29	7.4	SILVER
265G5	#6/8	.26	6.6	.36	9.1	TIN
265G6	#10/12	.17	4.3	.29	7.4	TIN

- NOTES:
 1. CONTACTS AVAILABLE ON A REEL ONLY
 2. CONTACT FACTORY FOR CRIMP DIES AND APPLICATORS

ITEM NO.	PART OR IDENTIFYING NO.	NOMENCLATURE OR DESCRIPTION	MATERIAL SPECIFICATION	QTY RECD
COPYRIGHT 2002 ANDERSON POWER PRODUCTS. ALL RIGHTS RESERVED. UNAUTHORIZED REPRODUCTION HEREBY PROHIBITED.				
DIMENSIONS ARE IN INCHES DIMENSIONS IN PARENTHESES [] ARE IN MILLIMETERS		CAD GENERATED DRAWING, DO NOT MANUALLY UPDATE	ANDERSON POWER PRODUCTS	
TOLERANCES ARE: 2PL- ±.02 [±.5]		APPROVALS	DATE	CATALOG NUMBER 265G HIGH DETENT REEL CONTACT FOR PP75 AND SB50 SIZE SPECIFICATION: 114361S1 REV. 0
MATERIALS:		DRAWN	4/10/02	
COPPER		CHECKED	DJD 4/26/02	
FINISH SEE TABLE		RESP ENG	MW 4/26/02	
NEXT ASSY	USED ON	MFG ENG	DAM 4/26/02	SCALE
APPLICATION	DO NOT SCALE DRAWING	QUAL ENG	RPO 4/26/02	NONE
			CADFILES/01593	SHEET 1 OF 1

8 7 6 5 4 3 2 1