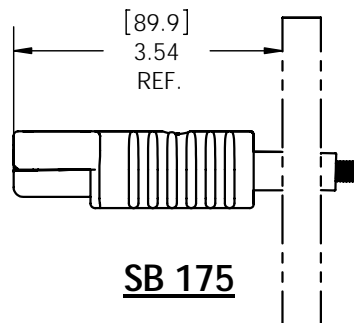
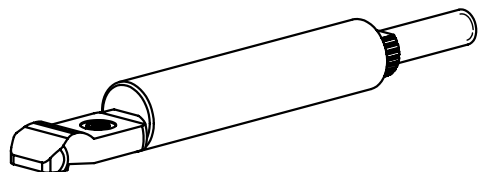


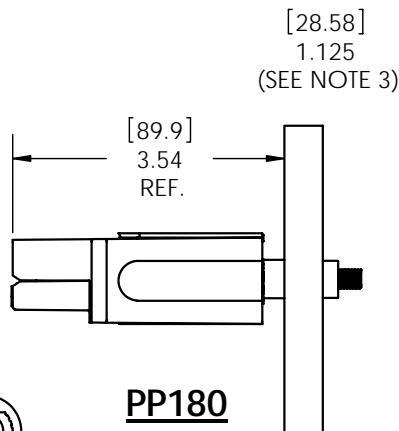
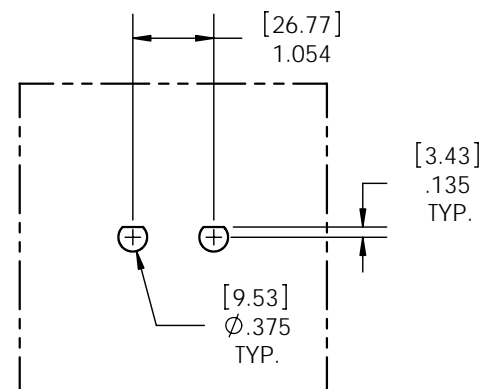
THE INFORMATION CONTAINED IN THIS DRAWING IS THE SOLE PROPERTY OF ANDERSON POWER PRODUCTS. ANY REPRODUCTION IN PART OR WHOLE WITHOUT THE WRITTEN PERMISSION OF ANDERSON POWER PRODUCTS IS PROHIBITED.

Copyright 2007

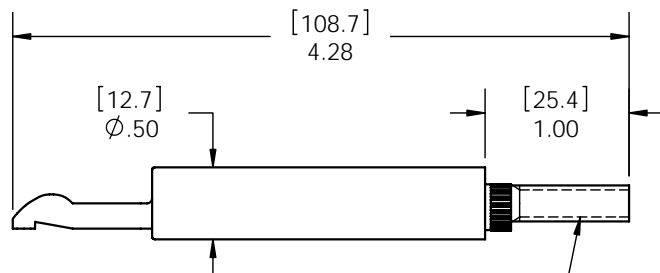
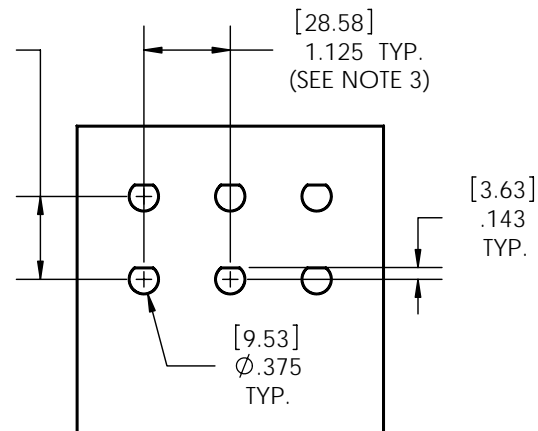
ANDERSON POWER PRODUCTS RESERVES THE RIGHT TO ALTER PRODUCT TYPES, THEIR TECHNICAL DATA, DIMENSION, STYLE AND ACCESSORIES WITHOUT PRIOR NOTIFICATION.



SB 175



PP180



#1/4-20 UNC-2A
WITHIN .08[2.0] OF END

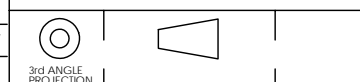
NOTES:

- CONNECTOR HOUSINGS SOLD SEPARATELY FOR USE WITH PP180 AND SB175 SERIES HOUSINGS
- #1/4-20 NUT AND WASHER INCLUDED
- TIGHTENING TORQUE = 70 IN-LBS
- LAYOUT DIMENSIONS ASSUME DOVETAIL ENGAGEMENT FOR PP HOUSINGS

DIMENSIONS ARE IN:	INCH[MM]
UNLESS OTHERWISE STATED	
TOLERANCES:	
DECIMALS (INCH)	DECIMALS (MM)
XX ± .02	X ± .5
ANGLES	
±2°	
SURFACE FINISH:	
MACHINED	128 [3.2] ✓
MOLDED	64 [1.6] ✓
MATERIAL:	
COPPER ALLOY	
FINISH:	
SILVER PLATE	

APPROVALS	
DRAWN	GN 02/25/02
CHECKED	BL 02/25/02
MFG APP	CHB 02/25/02
QC APP	RPO 02/25/02
ENG APP	UFN 02/25/02

ANDERSON POWER PRODUCTS		
TITLE		
PP180 & SB175 BUS BAR CONTACT		
CAT.NO. 180BBS		
SIZE	DWG NO.	REV.
A/A4	114385	1



-CAD GENERATED DRAWING-
DO NOT MANUALLY UPDATE
DO NOT SCALE

1	ECRN 14176 - UPDATE BORDER	AMS	07/02/07
REV.	DESCRIPTION OF CHANGES	APPROVED	DATE

SCALE	CADFILE	SHEET
NONE	01633	1 OF 1