

8 7 6 5 4 3 2 1

THE INFORMATION CONTAINED IN THIS DRAWING IS THE SOLE PROPERTY OF ANDERSON POWER PRODUCTS. ANY REPRODUCTION IN PART OR WHOLE WITHOUT THE WRITTEN PERMISSION OF ANDERSON POWER PRODUCTS IS PROHIBITED.

REV	DESCRIPTION OF CHANGES	DATE

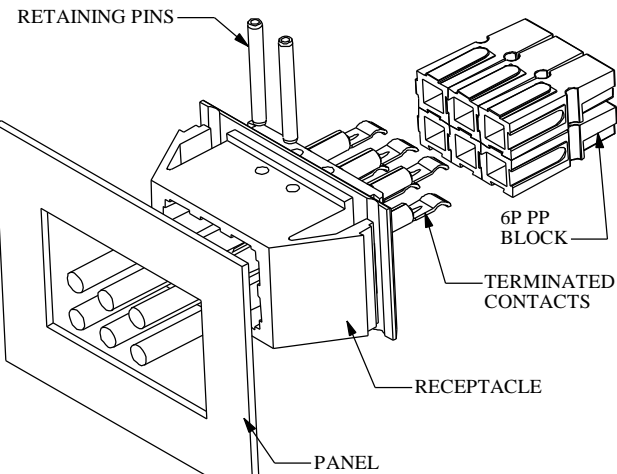
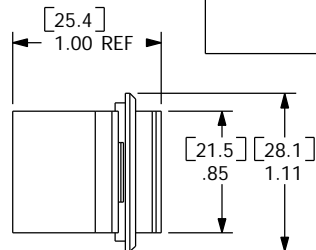
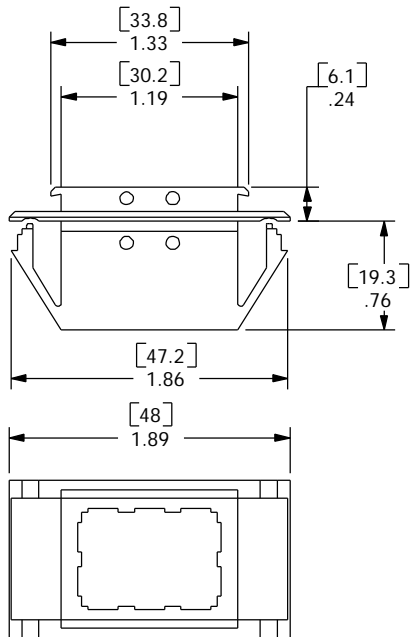
C

B

A

NOTES:

1. DESIGNED FOR PANELS .030- .134" (.76- 3.4mm) THICK
2. KNOCKOUT SIZE 1.00 X 1.62 (25.4 X 41.1)



TYPICAL ASSEMBLY- REFER TO CATALOG FOR AVAILABLE CONFIGURATIONS

ITEM NO.	PART OR IDENTIFYING NO.	NOMENCLATURE OR DESCRIPTION	MATERIAL SPECIFICATION	QTY REQD
COPYRIGHT 1999 ANDERSON POWER PRODUCTS. ALL RIGHTS RESERVED. UNAUTHORIZED REPRODUCTION HEREBY PROHIBITED.				
DIMENSIONS ARE IN INCHES DIMENSIONS IN PARENTHESES ( ) ARE IN MILLIMETERS		CAD GENERATED DRAWING. DO NOT MANUALLY UPDATE	ANDERSON POWER PRODUCTS	
TOLERANCES ARE: 2PL- ±.02 (±.5)		APPROVALS	DATE	
MATERIALS: POLYCARBONATE		DRAWN	CMS	8/6/99
FINISH		CHECKED	DJD	8/9/99
NEXT ASSY USED ON		RESP ENG	UFN	8/24/99
APPLICATION		MFG ENG	CHB	8/23/99
DO NOT SCALE DRAWING		QUAL ENG	RO	8/24/99
CATALOG NUMBER 1470G2 2X3 POWERPOLE PAK SNAP-IN RECEPTACLE			SIZE A	REV. 0
SPECIFICATION: 114167S2			SCALE	SHEET 1 OF 1
NONE			CADFILES/01095	